

CFU Calling

01 APRIL 2011

EXECUTIVE NEWS

When entering the date on this week's bulletin one is reminded of the pranks we used to play on each other in our school and university days on April Fool's Day – most of which usually backfired on us instead. We should probably therefore take a cue from our previous bad experiences of failed jokes and keep a tab on any attempted joke making during these very sensitive times.

The times are definitely very serious indeed as we are seeing in some of the courts where our farmers continue to be prosecuted under the Gazetted Land (Consequential Provisions) Act where some of the judiciary has definitely lost its sense of humour. What we are experiencing in some of the prosecutions is that some of the magistrates are allegedly taking their cue from a recent Supreme Court judgment, in an apparent effort to fast track the outstanding cases through the courts.

Although this has definitely made life very difficult for our brave and hardworking lawyers, we keep our trust in them and thank them for their incredible work they continue to do on all our behalf, day in and day out. We have a couple of difficult cases, which they are currently grappling with, which we are watching very closely and assisting where possible.

In some of the recent violent forced evictions, as well as some of the fast track prosecutions, we are noticing that the probable cause is the attempts to take over existing crops which are either in the sheds or still on the trees. There appears to be confusion, or alleged misunderstanding by some of the beneficiaries, and the powers that be, over the ownership of movable assets and crops under the Land Acquisition Act. In such cases one should contact us or your lawyers to clarify the position and, if possible, to intervene to salvage the situation.

We never cease to be amazed at just how many people think that land acquisition and its related violence and abuse is over. Many, even Zimbabweans, seem to be of the mistaken impression that everything is 'done and dusted' and that the country is back to normal again. Whilst we do our best to distribute the facts on the situation we remind you once again to continue to submit reports of incidents and court cases to Mike Clark at head office or to mashc@cfuzim.org Thank you.

Following our previous reports and warnings about travellers being ambushed, assaulted and robbed when stopping at lay-byes on the national highways we are following up on a rumour of two, possible three, men who were allegedly abducted and killed whilst travelling in Zimbabwe. As soon as we know the facts we will make them known, but at this stage it is unconfirmed.

By all accounts President Deon Theron and Vice President Charles Taffs are having a successful and interesting trip to the UK and should be heading back home during the latter part of next week. Although we have maintained constant communication with them both, our intention is to leave any reporting until the finalisation of their trip.

Bearing this in mind, please remember that we have rescheduled our **Open Farmers' Meeting**, previously arranged for the 6 April 2011, to now take place on **Wednesday 13 April 2011**, at **2.30 pm**, at CFU Harare HQ. At this meeting you will be able to 'interrogate' them on their trip.

Just so we are not accused of poor communications with our members at the Union we recently received a technical report on the hits on our website www.cfuzim.org from February 27, 2011 to March 29, 2011. The report revealed that the site received some 2 136 hits counted during this period, with the majority of the hits coming from Zimbabwe. We found this extremely encouraging as we continue to do daily uploads and have more plans to upgrade the site, not only as an information centre for our members but also for research purposes.

Your comments are always welcome, especially on how to improve the site to suit your own needs and requirements. Of interest were the hits on our website recorded for last month from 77 other countries around the world as the below list shows evidence of the main hits:

Zimbabwe	749
South Africa	294
United States	223
United Kingdom	185
(not set)	150
Australia	81
Canada	47
Japan	40
Angola	25

The following are the dates for the future **Open Farmers' Meeting** to be held at your Union's offices in Harare, for next few months. All farmers are welcome to attend the meetings which start at **2.30 pm** in the afternoon. Please let your friends know and your spouses are more than welcome to attend, in fact we would encourage this.

Wednesday 13 April 2011

Wednesday 11 May 2011

Wednesday 8 June 2011

Wednesday 6 July 2011

Please note that the meeting on the 6th April 2011 has been postponed to 13th April 2011.

The Council meeting scheduled for 5 April 2011 has also been pushed a week forward to 12 April 2011.

Fertiliser and Crop Chemicals

Your Union has, this week met with representatives from Windmill (Pvt) Ltd to work on a pricing structure as well as to make available terms of credit for both fertiliser and crop chemicals for farmers. Details of the scheme will be released to farmers once they are concluded.

Should anyone be interested in taking advantage of this they should send details of their cropping programme as well as fertiliser and chemical requirements to Neil Wright on nw@cfuzim.org

Zimbabwe National Water Authority (ZINWA) – Justified charges of just another Piece of the Farmer? (from the desk of Marc Carrie-Wilson)

I resume the series of Articles on viability challenges faced by farmers with regard to levies by State Authorities and Parastatals. So far we have covered some aspects regarding the Environmental Management Agency (EMA).

To recap we have noted that in Zimbabwe today farmers have to cover many overheads and pay many charges in order to keep producing. Many of these fees and charges are to state run agencies for services and taxes. They include Rural District Council fees and rates, Environmental Management Agency fees, Zimbabwe Electricity Distribution and Transmission Company (ZEDTC) charges and not least of all the Zimbabwe National Water Authority (ZINWA) charges. This article covers some information about the last mentioned Authority ZINWA.

In the words of Leonardo Da Vinci "Water is the Driving Force of all nature" and of all people farmers understand this best. Water is more vital than oil to rural economies. Without out it a successful agricultural enterprise is impossible. However if water is too expensive this can mean that the cost of production exceeds the market price of the produced commodity. Recently many farmers have complained about high water charges.

So what are the facts? How much does ZINWA charge and for what? This is the first in a short series of articles about ZINWA and is intended to give you general information and ZINWA contact information:

THE PERMIT SYSTEM

Commercial use of water requires a permit

The following categories of water use require a permit

- a.) Abstraction of surface water for any purpose other than primary purpose; or
- b.) Storage of surface water in storage works in a public stream for
 - i. Any purpose other than primary use; or
 - ii. A primary purpose in excess of 5000m³
- c.) Construction of ground water storage works in a public stream for:
 - i. Any purpose other than primary use
 - ii. A primary purpose in excess of 5000m³
- d.) Abstraction of ground water for any purpose other than primary use
- e.) Interfering with a riverbed for any purpose.
-

A permit is issued by a catchment council. Sub-catchment councils monitor and supervise the exercise of permits on a day-to-day basis. The permit is valid for a given period and is subject to conditions set by the catchment council. A permit can be renewed or revised.

A permit is not required for a person who is abstracting water from ZINWA storage works. In this case ZINWA is the permit holder and the person enters into an agreement with ZINWA to access the water.

At the moment commercial users of water can be classified as (1) those that held water rights before the new Act became effective, (2) users who used water without water rights, (3) newcomers who want to access for commercial use.

Conversion of water permit

All water rights have been automatically converted to temporary permits. The temporary permits will allow the user to use the same quality of water as allowed in the old water right until such time that the catchment council revises the permit or when the user applies to the catchment council for a revision of the permit.

Application for a new permit

New users are required to apply for a permit for commercial use of water. Application forms are obtainable from catchment council, sub-catchment council and ZINWA office.

Application procedure

- An application is submitted to the relevant sub-catchment council (together with relevant reports and application fees).
- The sub-catchment council assesses the application and makes recommendations for consideration by the catchment council.
- Sub-catchment council submits one copy to the catchment manager together with the processing fee and another copy to the catchment council.
- The council notifies affected parties and invites objections.
- The catchment council, after assessing objections, analysing relevant reports and after consultation with the catchment manager, shall refuse the application or grant a permit provisional permit/temporary permit with conditions as they see fit.

Accompanying reports

Examples of reports which may be required to be submitted together with the application forms are:

- Hydrological report.
- Water engineer's report.
- Agricultural report.
- Prospectus approved by DNR (to clarify environmental effects of proposed project)
- RDC support letter (in case of applications within communal and resettlement areas)
- Government mining engineer's report
- Hydro geological report
- Any other report as required by the appropriate catchment council.

Please note that the applicant will only be required to submit reports that are relevant to his application.

Example of types of applications

Form No.	Description	Current application fee (US\$) (SI 21 of 2011)
W1	Surface water permit	20
W2	Right to interfere with river bed	TBA
W3	Amendment of permit	15
	Renewal of permit	15
	Extension of temporary/provisional permit	15
	Cancellation permit	5
W4	Appointment or allocation of permit on subdivision/consolidation of land	15
W5	Petition for combined water scheme	TBA
W6	Apportionment or allocation of scheduled irrigable area on subdivision/consolidation of land	TBA
GW1	Authority to sink a well for commercial use or drill a borehole	60 (Commercial) 30 (Urban)
	Ground water Permit Urban	60
GW4	Ground Water Permit Commercial	60

For Water abstraction the cost is quarterly using the following formula:

Total mega litres permitted multiplied by rate in schedule divided by 4

Ground Water Use (Household)	10 (quarterly)
Ground Water Use (Institutional)	15 (quarterly)

Raw Use of Water

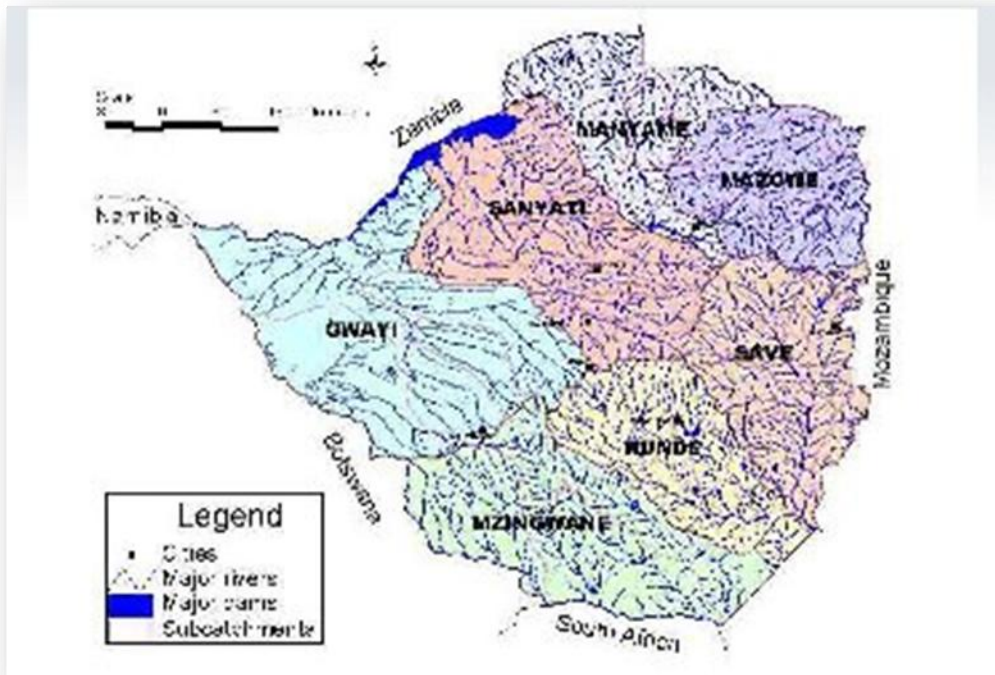
Commercial farming-cattle watering	US \$1 per m/l
Water bottling	US \$5 per m/l
Beverage purposes	US \$5 per m/l

Penalties

Late Registration penalty – Urban household	5
Late Registration penalty - commercial	25
Late Registration penalty - institutional	25
Tampering with dam basin and river beds (per offence)	100

Catchment Councils

The Map below shows the Jurisdictions of the various catchment councils



You can contact your Catchment Council using the following information. We encourage farmers to participate so engage your council over tariffs and explain the viability issues you are facing.

CONTACT OFFICES

ZINWA Head Office

8th Floor Old Mutual Centre, Cnr Third Street/Jason Moyo Avenue, P. O Box CY 617
Causeway, Harare, Zimbabwe
Tel : 700953 761260
Fax : 761465-6
E-mail: pr@zinwa.co.zw

Mazowe Catchment

3rd Floor, Old Mutual House Cnr Sam Nujoma/Speke Ave P.O Box CY 715, Causeway Harare
Tel : 700953 761260
Fax : 761465-6

Manyame Catchment

3rd Floor, Old Mutual House Cnr Sam Nujoma/Speke Ave P.O Box CY 715, Causeway Harare
Tel : 702124,793732,793738

Runde Catchment

Mineral Road
P.O Box 250 Masvingo
Tel : 039 63690 / 63427
Fax : 039 63972

Gwayi Catchment

New Government Complex Basch Street / 10th Avenue P.O Box 566, Bulawayo
Tel : 09 69361-3 / 62832 / 68070

Mzingwane Catchment

New Government Complex Basch Street / 10th Avenue P.O Box 566, Bulawayo

Tel : 09 69361-3 / 62832 / 68070

Save Catchment
7 Park Road P.O Box 210 Mutare
Tel : 020 60926
Fax : 020 62848

Sanyati Catchment
2nd Street P.O Box 554, Gweru
Tel : 054 22511
Fax : 054 20168

Next week we intend to cover Ministerial Water.

COMMODITIES

NATIONAL ASSOCIATION OF DAIRY FARMERS (from the desk of Rob Van Vuuren)

The last regional meeting to be held is for the **Mashonaland B Area** and this will be held on Wednesday 6th April 2011 at the Beatrice Club at 10.00a.m. Please will Mashonaland B farmers make every effort to attend this meeting. Please confirm your attendance with Stoff or Christine Hawgood. Debbie Mylroie has arranged for EMA representatives to attend this meeting to report and advise on environmental issues and assist farmers with any queries.

Ajs Kirk and Dr Rachel Stewart attended regional Meetings in Mutare, Chipinge, Midlands and Matabeleland this week and these meetings were well attended and the training done by Dr Stewart was informative and enlightening.

At present our offices are being painted and everything is literally "*upside down and topsy turvey*". Please bear with us whilst everything is being straightened out. Some days it is almost impossible to find our telephones.

LIVESTOCK INFORMATION

We have in stock and available at our offices at present:

Animal Foods of Central Africa Technical Handbook @ US\$10,00 each

Stock Registers @ US\$5,00 each

Daily Milk Records of Individual Cows @ US\$5,00 each

Recommended Guide to Good Dairy Farming Practices @ \$2.00 each

Dairy Handbooks @ US\$40,00 each

Cattle Producers' Association Beef Production Manual @ US\$40,00 each

Go Green Mastitis Mint @ US\$10,00 each

Should you be interested in purchasing any of the above items, please call at Commercial Farmers Union, Agriculture House and see Debbie Mylroie.

CATTLE PRODUCERS ASSOCIATION

GRADE	AVERAGE PER KG/LIVE WEIGHT PRICES			
	HARARE	GWERU	BULAWAYO	ESIGODINI
SUPER		-		
COMMERCIAL		1.59		
CHOICE		-		
ECONOMY		1.42		
COMMERCIAL ECONOMY		-		
MANUFACTURING		1.05		
BULLS		-		
WEANER HEIFERS		2.77		
BULLING HEIFERS		1.80		
LONG WEANER HEIFERS		-		

COW & CALF		-		
WEANER STEERS		1.70		
LONG WEANER STEERS		1.75		
FEEDER STEERS		1.75		
COMMERCIAL WEANER HEIFERS		-		
BREEDING COWS		1.89		
BREEDING BULLS		-		
STANDARD MUTTON		-		

ZIMBABWE CROP PRODUCERS' ASSOCIATION (from the desk of Dr Clive Levy)

Field Days

In the 1990s, we called it "the silly season"..... February-March was dominated by field days. Frequently, it was a case of being invited to ten - of which you could only hope to attend two - and then, you found you'd missed the Chinhoyi one you 'should' have been at, only because the organisers told you about it the day after it was on!!

The fast-track land reform has certainly taken care of that problem. For several years now we've limped along with very few farm gatherings – and even a morning looking at crops or livestock in a group has become a special event.

This summer, I feel the corner has been turned, - and we're into somewhat of 'a silly season' again. During the past two weeks, I've managed to attend four field-days around Harare (....and missed another two...). Certainly, I can compliment the organisers for their very high standards and presentation of their demonstrations. One glaring difference from 'the old days, though, is the changed emphasis of the type of agriculture and the composition of the audience. The focus is towards small-scale farming, and the badza has replaced the locally-manufactured star-wheel, no-till planter.....

One of these I was at was the ART Farm 'Clients' Field Day on 23 March. It was a wonderful display of what can be done in Zimbabwe, *IF* there is peace and stability on the land. Unfortunately, very few large-scale farmers were at this event. ART Farm, in association with the F.A.O., kicked off by demonstrating the benefits of Conservation Agriculture with a fine series of comparative plots. Four seed houses then presented their new and near-release varieties. While the emphasis was on predominantly on maize hybrids, the breeding of new sorghum, soyabean, dry bean, groundnut, sunflower, and cowpea varieties also achieved the objective of providing the public with very adaptable, high yielding, disease- and pest-resistant material. Despite the critics, Zimbabwe is not 'slipping behind the region' in these crops. One company is marketing a maize hybrid which has yielded 17 t/ha in small plot trials at ART - and would equate to 13-15 t/ha in large-scale production. On display were Seed Co's three soyabean varieties which are resistant to rust, and do not need to be sprayed. BASF presented holistic trials on "AgCelence" - a concept whereby their chemicals do not only controls disease, but also enhances the plant's physiology, thereby increasing the yield.

For those that did not attend these gatherings (whether you're farming, or not) – a polite word of advice - *make* time to go and participate in them. A lot of effort is put into them *for your benefit*. Who knows... apart from seeing 'old faces that are amazingly are still around', you may even learn something!!

COMMODITY PRICES (from the desk of Richard Taylor)

Local as at 31 March 2011 R6.78 - US\$

Commodity	GMB	Agrifoods	Intergrain	Staywell	Croplink
White Maize	275	275	280	245	270
Yellow Maize	275		280	245	270
Maize Bran	150	150		160	170
Soyabeans	300	500	460	500	500
Soyabean Meal		730		700	750
Wheat	466		440@30 days 400@7 days	500	440 (imported)
Wheat Bran		155		(130 Buy)	170

Groundnuts	470 (unshelled)		(shelled)	900 (shelled)	(shelled)
------------	--------------------	--	-----------	------------------	-----------

South African Foreign Exchange (SAFEX) as at 9 March 2011

Commodity	Rand/Tonne	US\$/Tonne	Import Parity Rand/Tonne	Import Parity US\$/Tonne
White Maize	1605	237	1765	260
Yellow Maize	1645	243	1805	266
Wheat	3029	447	3189	470
Soyabeans	3413	503	4573	527
Sunflowers	3930	580	4090	603

International Gulf

Commodity	US\$/Tonne			Import Parity US\$/Tonne
Wheat	329			479
Maize	293			443
Soyabeans	527			677

Source: South African Grain Information Service (SAGIS)

BUSINESS SECTION (from the desk of Richard Taylor)

The concept of the discounters club is taking off. Some company's who are offering the discounts are seeing the benefits and are promoting our membership cards. I have recently started to use my card and it is a pleasure when you actually see the saving one makes. Don't mind now so much, when the wife goes shopping

Subscription to become a discounter's cardholder is only \$5 per month (\$60/yr) so join now.

For more info on the discounters club, contact myself rich@discountersclub.com or Robyn robyn@discountersclub.com

We have had to change the draw date for the raffle. The new date is now the 15th April

The Zambezi Trader is currently the largest ship on Zimbabwe Waters. She has carried up to 170 people on a day cruise and has a cabin capacity of 52 people. The cabins range from 16 x Twin cabins, 2 x 4 sleeper bunk cabins, 4 x Double suites, 1 x King suite and 1 x Honeymoon suite. All cabins, dining room, conference and games rooms are air conditioned.

Win a trip for two nights at Kariba on the Zambezi Trader:

Winner will receive 2 nights free whole ship use for up to 44pax. Including everything except drinks (cash bar) cruising up to Elephant Point. Departing Marineland on Sat 30th April and returning Mon 2nd May at 12h00 (long weekend Workers day 1st May).

Money raised by this raffle will go to elderly welfare.

Please remember that we do have deals with Radzim on equipment so should you be looking for good Generators, trailer, spreaders etc give us a shout and I will get prices for you. There are also terms on a lot of the equipment.

COMMENTS AND VIEWS

Please let us know your comments and views on items contained within this issue or any other issues of CFU Calling by sending an email to us on dir@cfuzim.org Disclaimer: This email and files transmitted with it contain confidential and privileged information and are intended solely for the use of the individual or entity to which they are addressed. If you have received this email in error please -- do not read, disseminate, distribute, copy or take action in reliance on this email and- delete it immediately and arrange for the deletion thereof on your server, and- notify the administrator immediately. Any unauthorised, use duplication or interception of this e-mail or any files transmitted with it is expressly and strictly prohibited. No representation, guarantee or undertaking (expressed or implied) is made or given- As to the confidentiality or security of the e-mail

system' or as to the accuracy of the information in this email and any files transmitted with it is virus-free. No responsibility or liability is accepted for: the proper, complete transmission of the information contained in this email or any files transmitted with it or any delay in its receipt; or rising from or as a result of the use of or reliance on the content of this email or any files transmitted with it. Any views expressed in this email or any files transmitted with it are not necessarily the views of the Commercial Farmers' Union. Queries regarding this email or any files transmitted with it should be directed to dir@cfuzim.org. This disclaimer forms part of the content of this e-mail for purposes of section 11 of the Electronic Communications and Transactions Act 2002 (Act No. 25 of 2002).