



Exhibition Park, Samora Machel Avenue West, Belvedere  
P. O. Box BE 209, Belvedere, Harare  
Phone: 04-756 600, 772 915, 777 391  
Email: [admin@lit.co.zw](mailto:admin@lit.co.zw)

## **Raw Materials Usage and Feed Production Returns**

**August 2014**

The Stockfeed Manufacturers Association raw materials procurement, feed manufactured and average prices for the period January 2012 to June 2014 are summarised in the tables and graphs below.

Returns were collated from the following companies: Agrifoods, Capital Feeds, Feedmix, Fivet Animal Health, Hamara Feeds, Hyperfeeds, Ice Feeds, Irvines Zimbabwe, Lake Harvest, Manyame Milling, National Foods Ltd, Novatek Animal Feeds, Profeeds, RT Feeds and Triple C Pigs.

Raw materials procured and feeds manufactured in the first 6-months of 2014 averaged 33,153 and 34,578mt per month, respectively, representing increases of 2% and 16% over the same period in 2013. Raws procurement and feeds manufactured plummeted to 25,335 and 28,416mt in February, respectively, following the peaks of 42,334 and 44,100mt in December 2013 before recovering to 39,982 and 40,757mt in June. Vertically integrated feed plants

manufactured 6,238mt per month in the first half of 2014, representing 18% of feeds produced.

Average maize procurement over the period January to June 2014 was 14,963 mt per month being similar to procurement over the same period in 2013 while average soya bean equivalent procured in the first 6 months of 2014 was 9,187mt per month, a decrease of 8% over the same period last year. Maize and soya procurements accounted for 67% of all raw materials procured by weight. Procurement of full fat and solvent extracted soya meal continued to increase (34%) whereas procurement of soya beans declined by 76%.

Poultry feeds accounted for 74% of all feeds produced and closely mirrored production of broiler day old chicks. Broiler feeds in the first half of 2014 were 20% higher than feeds produced over the same period in 2013. Similarly, broiler day old chick production had increased by 17% over the same period.

Prices of most raw materials in the first half of 2014 were lower than those of the last six months of 2013. Notable exceptions were the price of maize which increased by 6% while the price of low CP cotton cake increased by 53%. Correspondingly, prices of manufactured feeds were either similar or had decreased compared to prices in the last half of 2013.

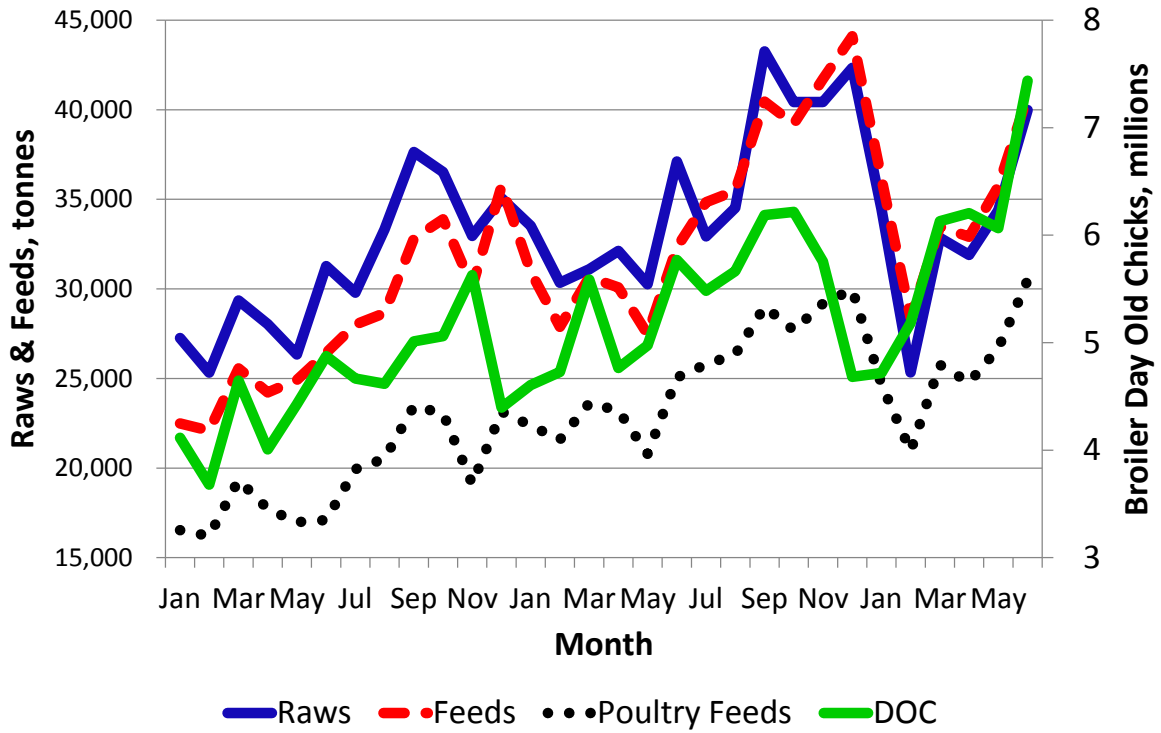
<b>Tonnages of Raws Procured - January 2012 to June 2014</b>						
	Monthly Averages					Jan-Jun '14
	2012		2013		2014	compared to
<b>Feed Raw Materials</b>	Jan-Jun	Jul-Dec	Jan-Jun	Jul-Dec	Jan-Jun	Jan-Jun '13
Maize	13,620	15,085	14,951	16,917	14,963	0%
Soya beans	1,393	1,854	1,262	973	300	-76%
Soya meal - FF	217	274	1,178	1,425	1,579	34%
Soya meal - ME	3,988	4,542	1,831	2,182	2,076	13%
Soya meal - SE	1,392	1,725	3,845	3,727	3,403	-11%
Total Soya (bean equivalent)	8,475	10,135	9,986	10,253	9,187	-8%
Wheat Bran	2,433	3,414	3,107	5,041	4,181	35%
Maize Bran	1,565	2,205	1,922	2,630	2,543	32%
Cotton cake < 30% CP	229	562	410	323	305	-26%
Cotton meal >30% CP	348	382	419	679	320	-24%
Cotton seed - Whole	61	164	93	197	65	-30%
Sunflower cake/meal	283	145	232	641	519	124%
Molasses	190	783	641	1,213	601	-6%
Urea	22	79	61	73	51	-16%
Salt	118	161	181	146	112	-38%
Cotton hulls	297	669	456	744	267	-41%
Hay	12	62	18	73	72	305%
MCP	208	274	187	150	143	-24%
Fine Limestone Flour	-	-	905	926	547	-40%
Coarse Limestone Flour	-	-	68	57	250	270%
Methionine	30	37	37	26	34	-9%
Lysine	20	79	22	17	26	17%
Meat and Bone Meal	351	461	494	739	700	42%
Fish Meal	195	167	93	84	97	4%
<b>Totals</b>	<b>27,932</b>	<b>34,214</b>	<b>32,411</b>	<b>38,983</b>	<b>33,153</b>	<b>2%</b>

<b>Tonnages of Feeds Manufactured - January 2012 to June 2014</b>						
<b>Production/Sales</b>	Monthly Averages					Jan-Jun '14
	2012		2013		2014	compared to
	Jan-Jun	Jul-Dec	Jan-Jun	Jul-Dec	Jan-Jun	Jan-Jun '13
<b>Poultry</b>						
Broiler Starter	2,438	3,233	3,021	3,683	3,663	21%
Broiler Grower	1,277	1,965	3,245	3,948	4,068	25%
Broiler Finisher	4,619	5,669	6,668	9,164	7,786	17%
Layer Rearing Feed	928	1,103	757	989	1,149	52%
Layer Production Feeds	4,463	5,486	5,269	5,604	4,954	-6%
Poultry Breeder feeds	2,779	2,977	2,944	3,387	3,030	3%
Poultry Concentrates	809	1,108	869	1,224	908	4%
<b>Dairy</b>						
Dairy meals	1,417	1,368	1,184	1,486	1,865	57%
<b>Beef</b>						
Beef Pen Fattening	1,571	3,395	1,971	4,591	2,570	30%
Beef Maintenance Feeds	235	1,028	283	928	768	172%
Beef Concentrates	371	267	68	234	35	-49%
<b>Pig</b>						
Juvenile Feeds	358	458	435	343	315	-28%
Growing and Fattening feeds	1,324	1,515	1,336	1,391	1,682	26%
Pig Breeder Feeds	394	413	483	496	593	23%
Pig Concentrates	279	199	332	661	65	-80%
<b>Fish</b>						
Aqua Feeds	1,024	1,354	1,030	1,170	1,129	10%
<b>Sundry Feeds</b>						
All Other species feeds	509	519	414	632	807	95%
<b>Totals</b>	<b>24,287</b>	<b>31,539</b>	<b>29,895</b>	<b>39,297</b>	<b>34,578</b>	<b>16%</b>
<b>Poultry feeds</b>						
Broiler	8,334	10,866	12,934	16,795	15,517	20%
Layer	5,391	6,589	6,026	6,593	6,102	1%
Breeder	2,779	2,977	2,944	3,387	3,030	3%
Concentrates	809	1,108	869	1,224	908	4%
Poultry - Total	17,313	21,540	22,773	27,998	25,557	12%
Broiler day old chicks, millions	4.29	4.90	5.07	5.66	5.96	17%

<b>Prices of Raws Procured - January 2012 to June 2014</b>						
	6-Month Averages					Jan-Jun '14
	2012		2013		2014	compared to
<b>Feed Raw Materials</b>	Jan-Jun	Jul-Dec	Jan-Jun	Jul-Dec	Jan-Jun	Jul-Dec '13
Maize	259	288	346	353	373	6%
Soya beans	549	621	643	610	596	-2%
Soya meal - FF	839	788	830	746	727	-2%
Soya meal - ME	665	786	828	747	726	-3%
Soya meal - SE	688	747	805	778	744	-4%
Wheat Bran	170	190	197	187	185	-1%
Maize Bran	172	191	197	200	180	-10%
Cotton cake < 30% CP	288	273	228	220	335	53%
Cotton meal >30% CP	347	382	364	349	343	-2%
Cotton seed - Whole	290	292	268	278	270	-3%
Sunflower cake/meal	419	441	478	514	525	2%
Molasses	136	135	126	124	131	6%
Urea	774	808	783	740	694	-6%
Salt	235	239	226	237	218	-8%
Cotton hulls	81	111	130	104	119	14%
Hay	94	164	170	125	140	12%
MCP	978	920	904	771	758	-2%
Fine Limestone Flour			120	120	108	-9%
Coarse Limestone Flour			147	156	146	-7%
Methionine	5,649	4,950	4,413	4,495	4,302	-4%
Lysine	3,221	3,059	2,884	2,561	2,255	-12%
Meat and Bone Meal	800	836	881	843	837	-1%
Fish Meal	1,358	1,355	1,596	1,544	1,541	0%

<b>Prices of Feeds Manufactured - January 2012 to June 2014</b>						
	6-Month Averages					Jan-Jun '14
<b>Production/Sales</b>	2012		2013		2014	compared to
<b>Poultry</b>	Jan-Jun	Jul-Dec	Jan-Jun	Jul-Dec	Jan-Jun	Jul-Dec '13
Broiler Starter	547	566	678	678	668	-2%
Broiler Grower	541	565	669	670	668	0%
Broiler Finisher	526	535	637	639	640	0%
Layer Rearing Feed	459	498	544	575	550	-4%
Layer Production Feeds	471	490	557	555	545	-2%
Poultry Breeder feeds	481	496	547	562	553	-2%
Poultry Concentrates	839	830	931	952	850	-11%
<b>Dairy</b>						
Dairy meals	307	292	323	335	269	-20%
<b>Beef</b>						
Beef Pen Fattening	209	208	267	262	265	1%
Beef Maintenance Feeds	289	264	241	259	247	-5%
Beef Concentrates	290	290	360	317	107	-66%
<b>Pig</b>						
Juvenile Feeds	573	630	647	629	620	-1%
Growing and Fattening feeds	478	512	498	485	510	5%
Pig Breeder Feeds	419	454	486	486	483	-1%
Pig Concentrates	645	662	684	676	704	4%
<b>Fish</b>						
Aqua Feeds	615	733			712	
<b>Sundry Feeds</b>						
All Other species feeds	445	394	484	505	422	-16%
<b>Blended Prices of Poultry Feeds</b>						
Broiler	535	550	655	655	654	0%
Layer	468	491	555	558	546	-2%

**Raws procured, feeds and broiler day old chicks produced, Jan 2012 to Jun 2014**



**Feeds produced, Jan 2012 to Jun 2014**

