



Zimbabwe Poultry Association

Old Show Office, Exhibition Park, Samora Machel Ave, Harare
P O Box BE 209, Belvedere, Harare
Ph 756 600 / 772 915 / 777 391 Fax 774 800 Email admin@lit.co.zw

Newsletter February 2015

Contents

- Production News
- Inputs and Raw Materials
- Market Watch
- Imports
- Veterinary Report
- Council Activities

Production News

The broiler industry continues to grow from strength to strength and set new monthly and yearly records. Day old chick production peaked at 8.4 million in September 2014 compared with the previous peak of 6.2 million in October 2013 and total chick production in 2014 was 78.4 million, an increase of 22% over the record of 64.4 million achieved in 2013 (Tables 1 & 2, Figures 1a & b).

Large-scale broiler sector meat production in 2014 was similar to 2013 at 2,690mt per month (Table 1 and Figures 2a & b). However, estimated total meat production from day old chicks produced in 2014 is estimated to have increased by 24% to 11,000mt per month (Figure 2c). The increase is attributed to the growth in the smallholder sector which is estimated to account for more than 70% of total chick sales (Figure 2d).

Day old sexed layer pullet production in 2014 was 3% down compared with 2013 (Table 1, Figure 3) while large scale table egg production declined by 16% to 2 million dozen eggs per month (Tables 1 & 2, Figure 4a). However, total egg production, estimated from pullet sales, is estimated to have declined by 6% to 4 million dozen eggs per month, which is partly offset by an increase in smallholder egg production (Figure 4b).

Inputs and Raw Materials

The prices of maize and soya products remained relatively static over the last six months of 2014 and this was reflected in static poultry feed prices. The averages price of maize and

solvent extracted soya meal were \$355 and \$650/mt, respectively and weighted broiler and layer feeds prices were \$640 and \$512/mt (Figures 5a & b), respectively.

The stock feed industry continues to grow in parallel with the increase in broiler day old chick production and in 2014, poultry feeds accounted for 71% of the monthly feed production of 38,500mt (Figure 6a). The poultry industry is now estimated to consume 14,400mt soya beans and 20,700mt maize per month (Figure 6b).

Market Watch

Abattoir operators are reporting low live broiler supplies and have increased producer prices to between \$2.00 and \$2.05/kg towards the end of January. Farmers are responding to the improved price incentives. The demand for day old chicks is currently quite firm at \$0.75 per chick. The table egg market is also firm.

Imports

Illegal imports of frozen chicken seem to have significantly declined although some there have been some reports of imports of time expired product through Namibia.

Veterinary Report

No new information on major disease outbreaks were received.

Council Activities

A sub-committee of the ZPA Council is meeting various Government departments tasked with control of the import of livestock products to craft ways of ensuring that there is no repeat of what happened in the second half of 2014 when there was an influx of illegal imports of chicken products into the country. The objective is to ensure that there is fair competition for locally produced chicken and to reduce the risk of importing livestock and human diseases into the country.

Kind regards,



Solomon Zawe
Chairman

Table 1. Comparison of Monthly Production from January to September for the period 2009 to 2014*

Broilers	2009	2010	2011	2012	2013	2014
<u>Average stockholding per month</u>						
Broiler Breeders - Growing	171,892	287,352	285,724	273,060	335,298	321,219
Broiler Breeders - Mated	244,443	297,940	442,585	409,748	468,066	461,666
<u>Total Sales and Retentions</u>						
DO Broiler breeders, ea	740,088	916,863	1,000,521	978,972	1,015,089	855,079
Hatching eggs, ea					79,143,795	81,892,836
Hatching egg imports, ea					7,894,518	20,064,565
DO Broilers, ea	18,405,356	37,523,124	52,099,337	55,128,793	64,415,326	78,374,003
<u>Production</u>						
Dressed broilers, #	7,826,643	14,545,288	18,469,059	16,725,500	20,632,080	20,856,308
Dressed broilers, mt	10,635	19,694	24,750	23,050	31,527	32,285
<u>Layers</u>						
<u>Average stockholding per month</u>						
Layer Breeders - Growing	23,354	39,390	27,842	24,527	25,475	21,843
Layer Breeders - Mated	34,389	66,188	64,768	56,159	48,031	41,173
Layers - Growing	226,689	410,077	294,601	430,283	407,963	283,983
Layers - In-Lay	415,433	802,332	1,155,756	1,087,046	1,090,607	950,009
<u>Total Sales and Retentions</u>						
DO Layer breeders, ea	104,360	115,288	92,000	67,694	78,461	32,999
Hatching eggs, ea					10,659,827	9,761,722
Hatching egg imports, ea					160,200	648,360
DO Sexed pullets, ea	1,729,788	2,422,648	2,235,705	2,762,545	2,406,231	2,333,257
POL pullets, sales	24,925	28,418	143,363	75,041	194,293	141,463
<u>Production</u>						
Table eggs, doz	7,566,415	16,423,381	25,163,637	24,977,122	24,605,308	20,629,422
Egg pulp, kg	3,515	30	2,921	4,805	182,161	32,981
<i>* Statistics collated from ZPA breeders and large scale producers and processors - See below</i>						

AG Franceys & Sons	Eastip	Hukuru Chicks	Muller Bros
All Avian	Fairhill Farm	Irvine's Zimbabwe	Sable Foods
Charles Stewart Day Old Chicks	Fathsons	Lunar Chickens P/L	Supa Chick
Crest Poultry Group	Festive Eggs	Masvingo Chicks	Surrey Huku
Drummond Farm	Hamara Farm	Morning Star	
Drummond Ranching	Henn Chicks	MSU Agro	

Table 2. Zimbabwe Poultry Association Returns, January to December 2014

BROILER PRODUCTION			TABLE EGG PRODUCTION		
	Avg	Total		Avg	Total
<u>Female Parent Stock</u>			<u>Female Parent Stock</u>		
Chick Sales - including exports	32,542	390,498	Chick Sales - including exports	767	9,200
Chick Retentions/Placements	38,715	464,581	Chick Retentions/Placements	1,983	23,799
Growing	321,219		Growing	21,843	
In Production	461,666		In Production	41,173	
<i>Chick Exports</i>	29,619	355,422	<i>Chick Exports</i>	800	9,600
<u>Hatching Eggs</u>			<u>Hatching Eggs</u>		
Produced (ea)	6,824,403	81,892,836	Produced (ea)	813,477	9,761,722
Imported (ea)	1,672,047	20,064,565	Imported (ea)	54,030	648,360
Sales - including exports (ea)	742,390	8,908,680	Sales - including exports (ea)	39,483	473,800
Price	0.35		Price	0.27	
<i>Exported (ea)</i>	104,580	1,254,960	<i>Exported (ea)</i>	-	-
<u>Day Old Chicks</u>			<u>Day Old Chicks</u>		
Retentions/Placements	1,053,060	12,636,719	Retentions/Placements	48,710	584,517
Sales - including exports	5,478,107	65,737,284	Sales - including exports	145,728	1,748,740
Price per 100 chicks	69.83		Price per 100 chicks	128.92	
<i>Exports</i>	63,123	757,475	<i>Exports</i>	23,092	277,100
<u>Broilers</u>			<u>Point of Lay</u>		
Number slaughtered	1,738,026	20,856,308	Sales	11,789	141,463
Average live weight	1.87		Price per bird	10.48	
Producer price, \$/kg	2.04				
Total dressed weight, tonnes	2,690	32,285	<u>Layers</u>		
Wholesale - whole bird	3.46		Growing	297,244	
Leg quarters	3.63		In-lay	994,855	
Breast	4.62		Sale price of spent hens	4.05	
1kg IQF	3.66				
2kg IQF	5.16		<u>Table Eggs</u>		
<i>Exports (tonnes)</i>	-	-	Produced (doz)	1,719,118	20,629,422
<i>Stock Holding (tonnes)</i>	688	8,261	Wholesale price per tray	4.20	
			<i>Exported (doz)</i>	9,750	117,000
			<i>Stockholding (doz)</i>	178,686	2,144,230
			<u>Egg Pulp</u>		
			Sold (kg)	2,748	32,981
			<i>Exported (kg)</i>	-	-

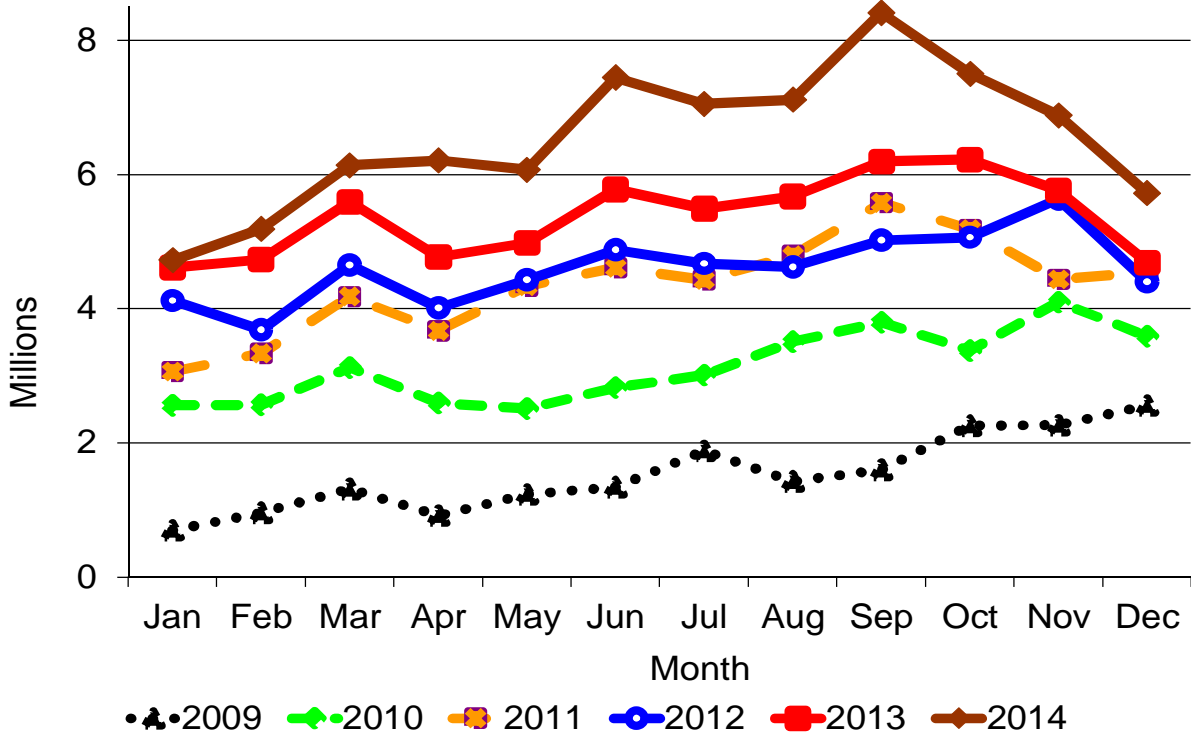


Figure 1a. Day Old Broiler Chick Production, 2009 to 2014

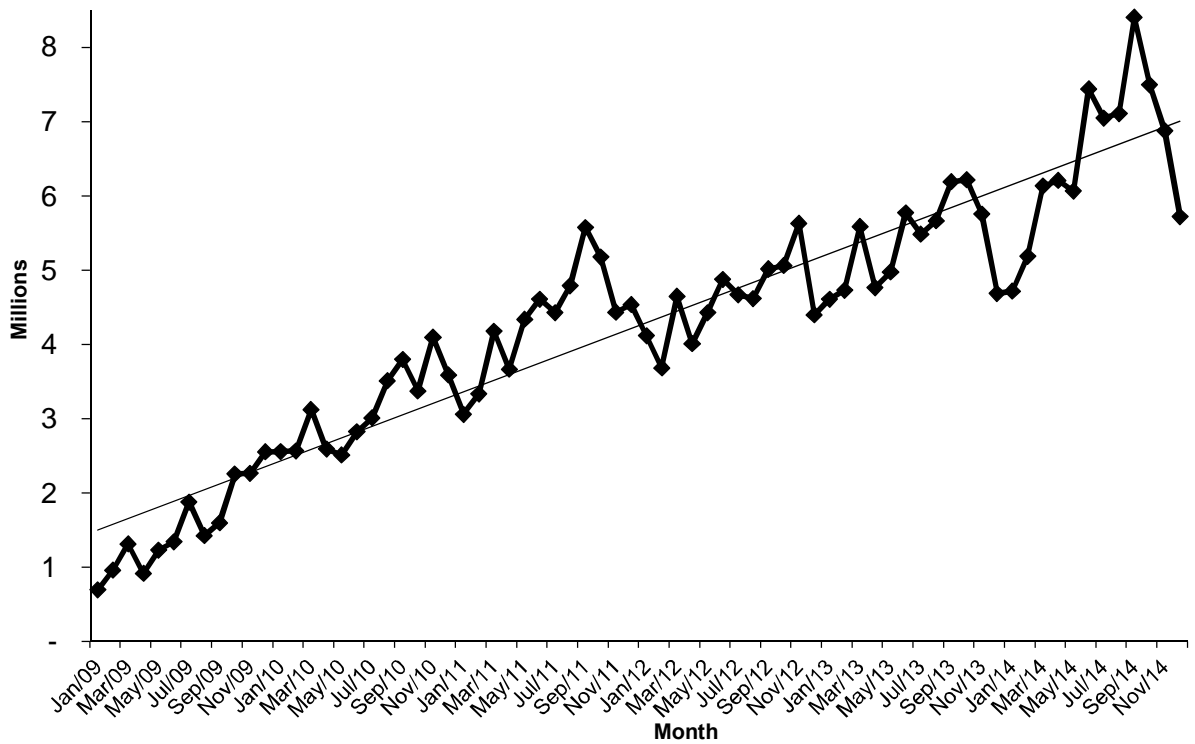


Figure 1b. Day Old Broiler Chick Production, 2009 to 2014

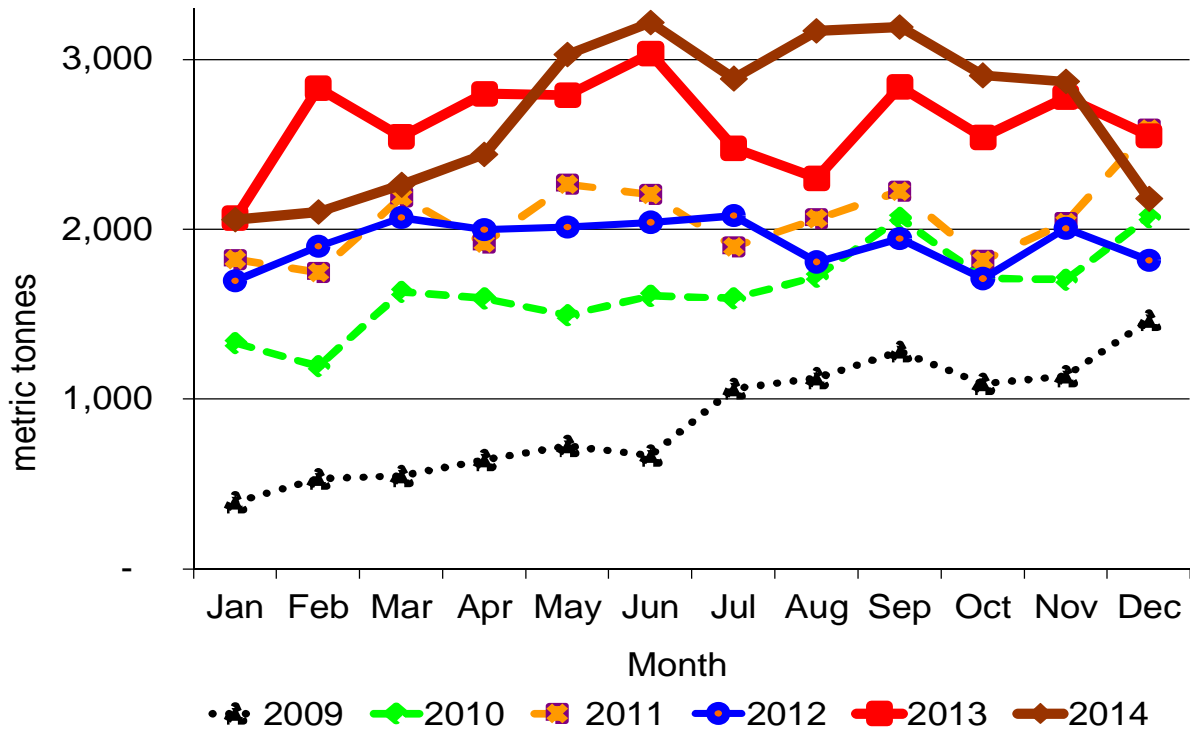


Figure 2a. Broiler meat production, 2009 to 2014

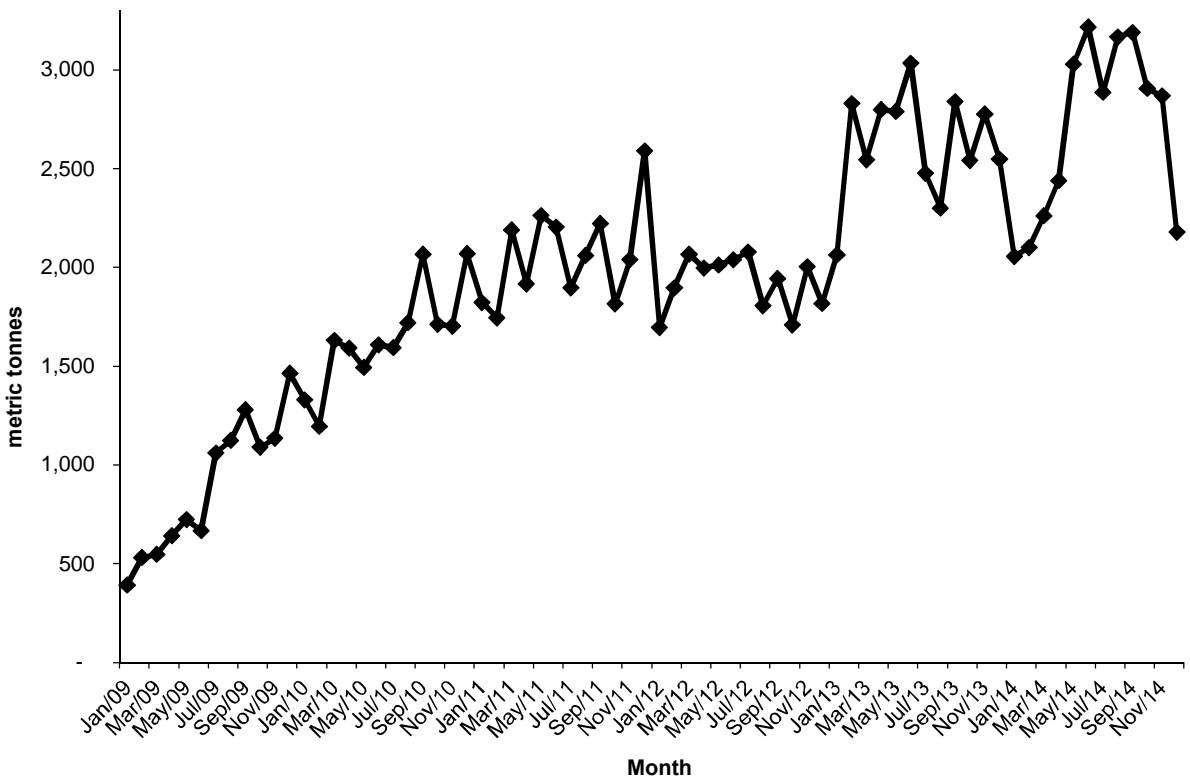


Figure 2b. Broiler meat production, 2009 to 2014

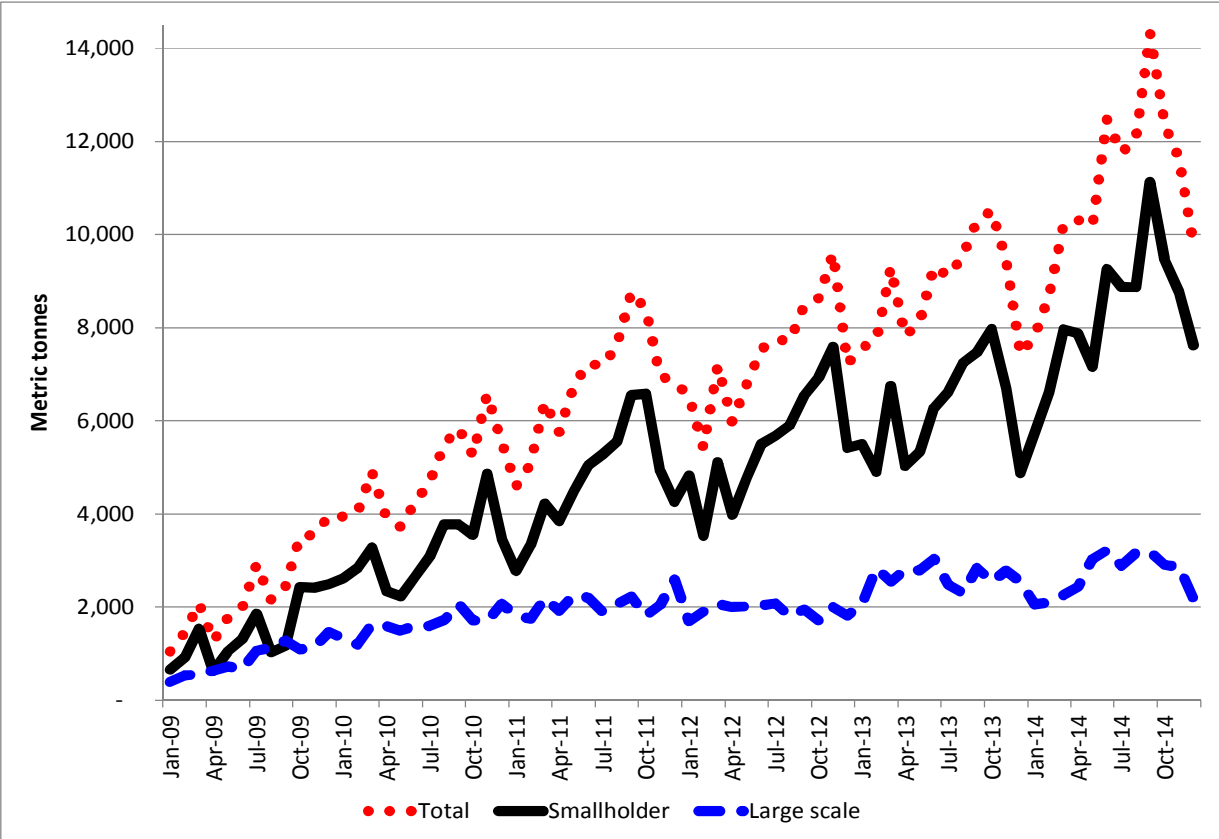


Figure 2c. Estimated total broiler meat production, 2009 to 2014

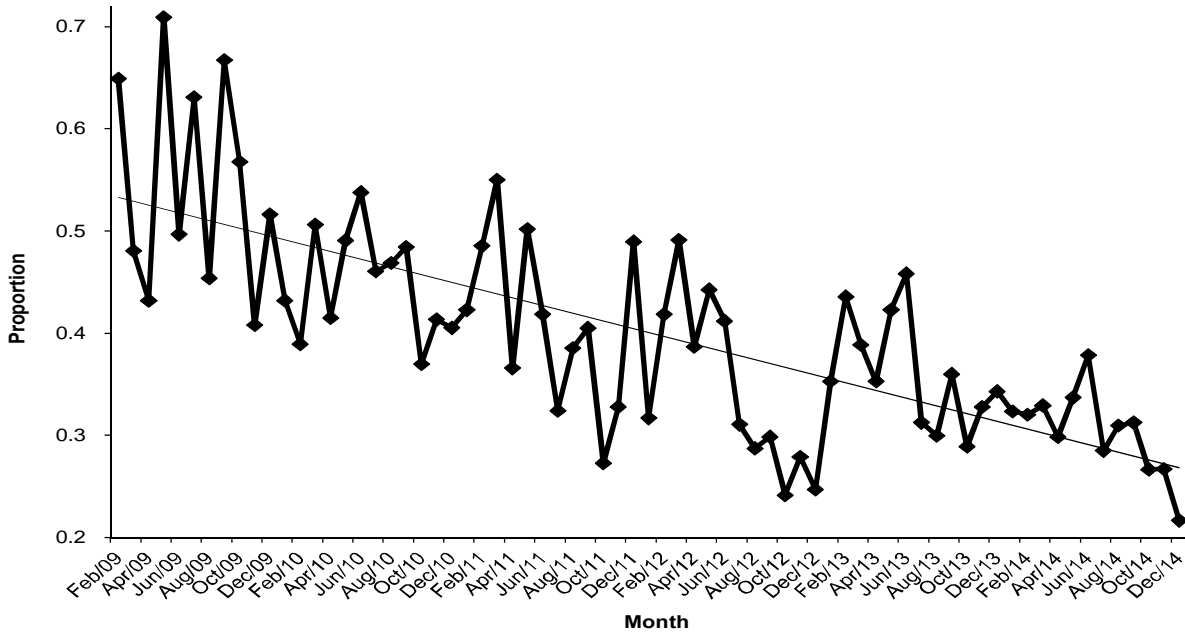


Figure 2d. Proportion of broiler birds processed compared to chicks sold in previous month, 2009 to 2014

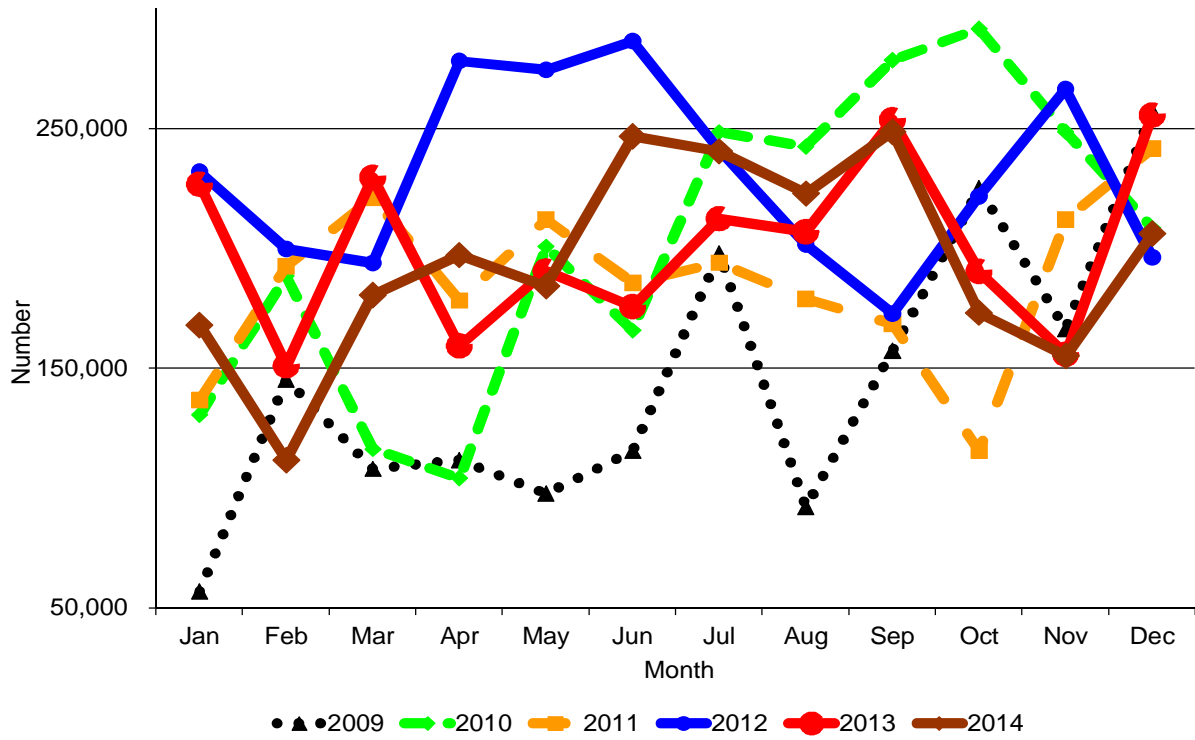


Figure 3. Table egg production, 2009 to 2014

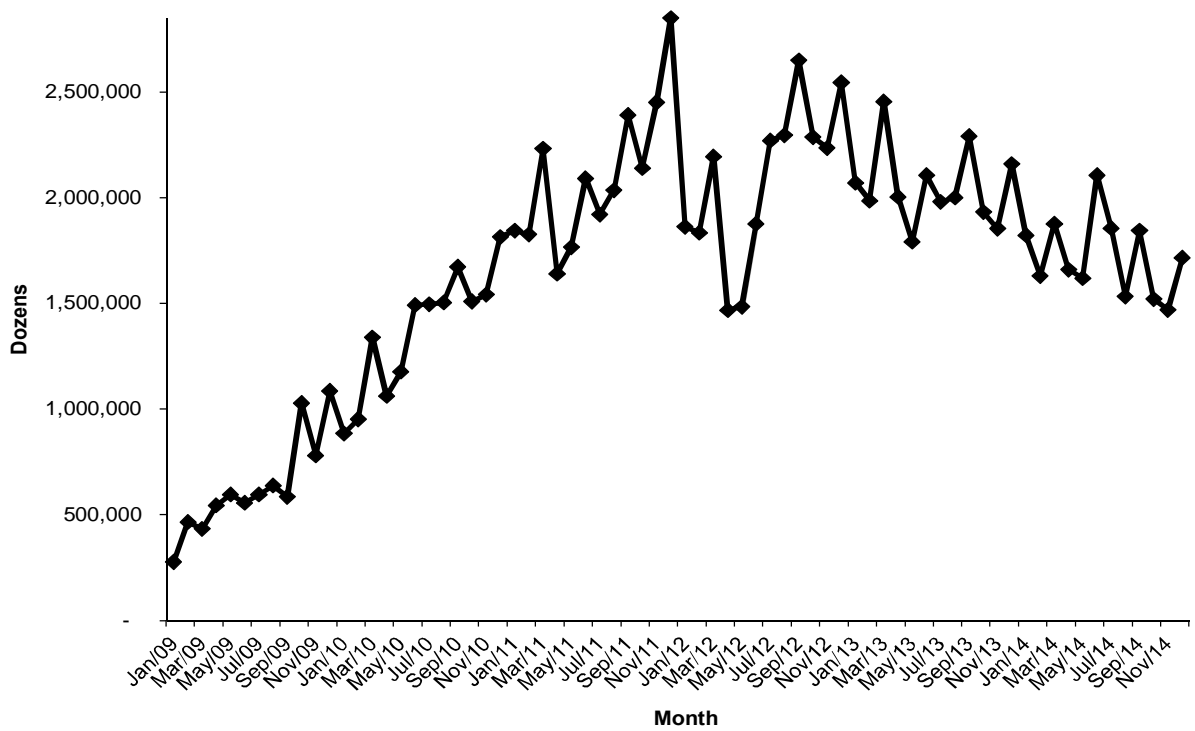


Figure 4a. Table egg production, 2009 to 2014

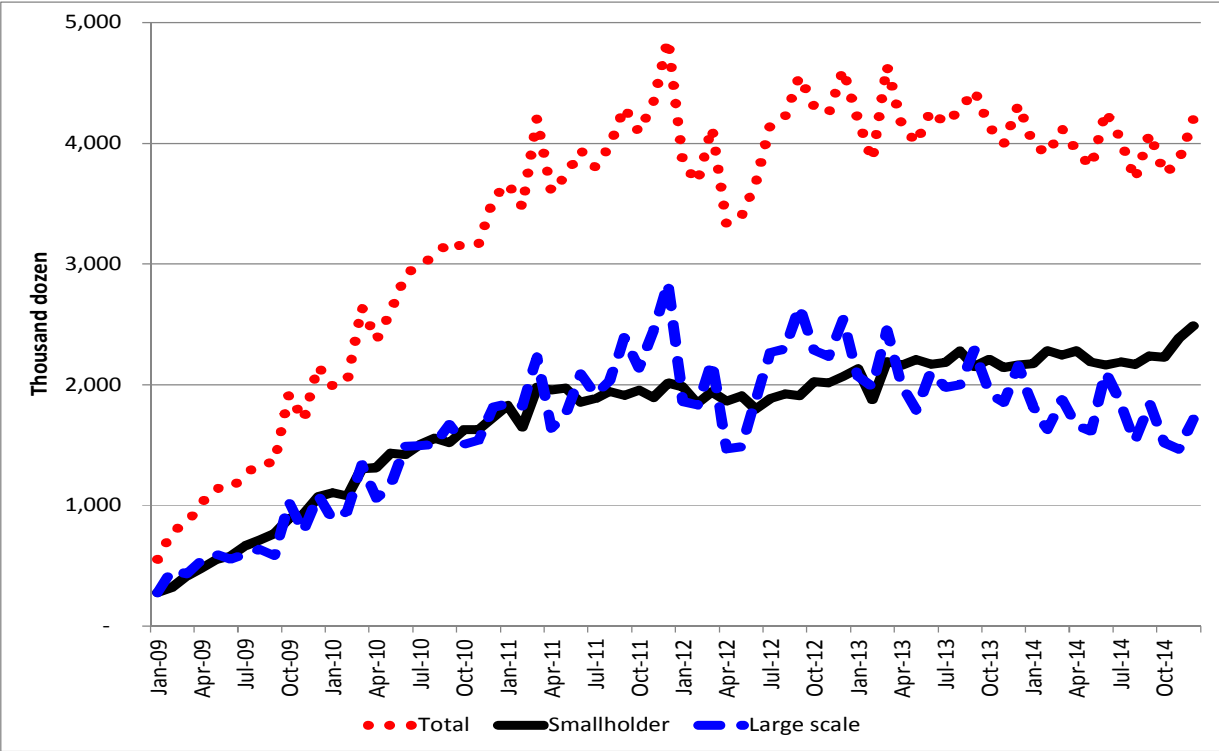


Figure 4b. Estimated total table egg production, 2009 to 2014

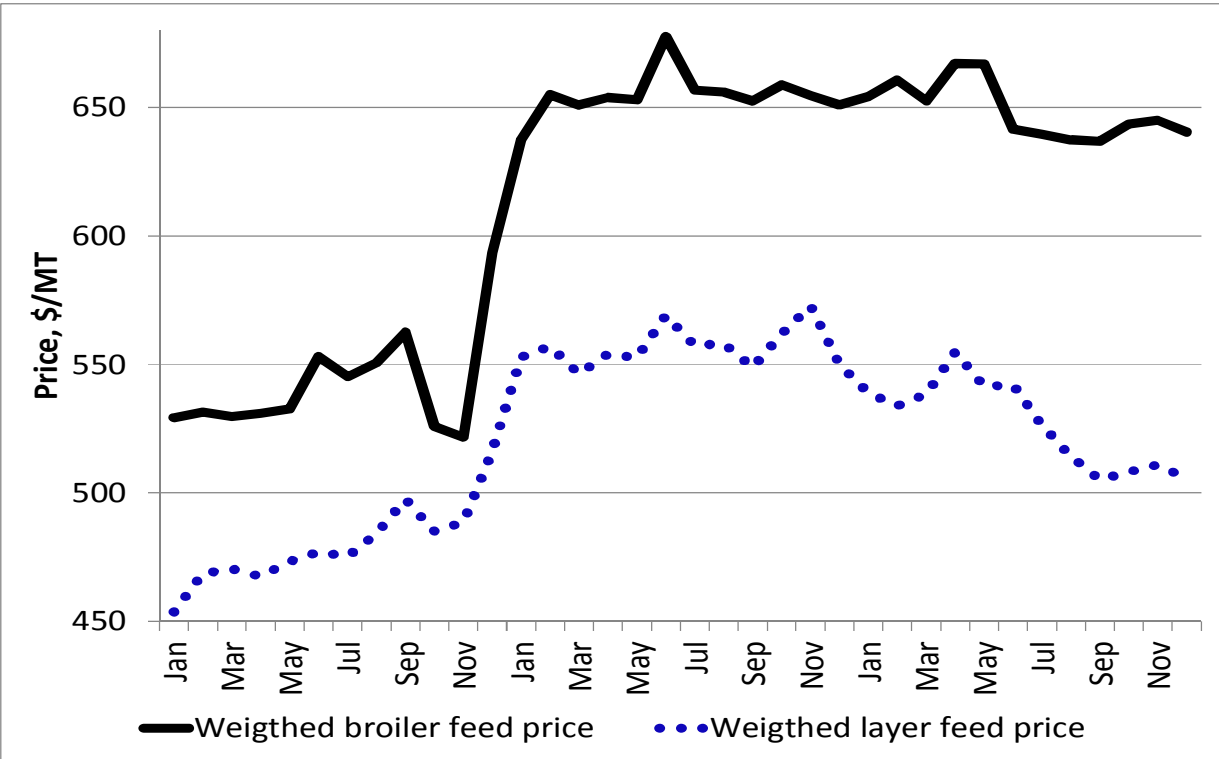


Figure 5a. Weighted prices of broiler and layer feeds, 2012 to 2014

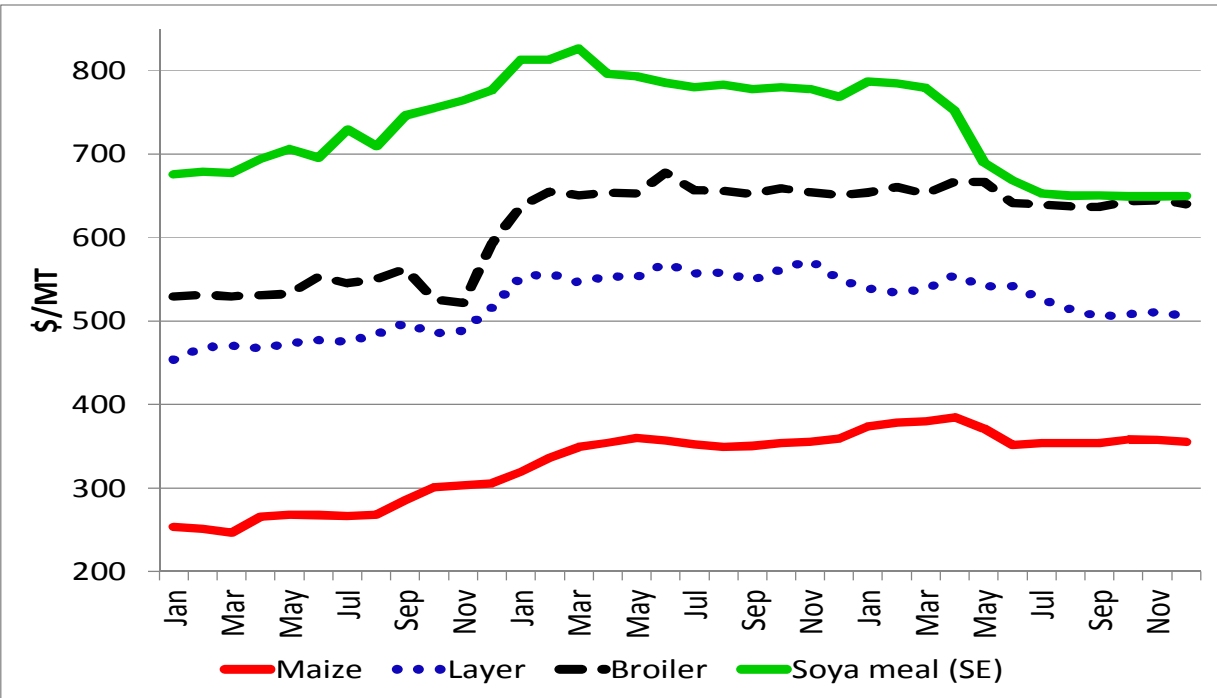


Figure 5b. Prices of maize, solvent extracted soya meal and weighted broiler and layer feeds, 2012 to 2014

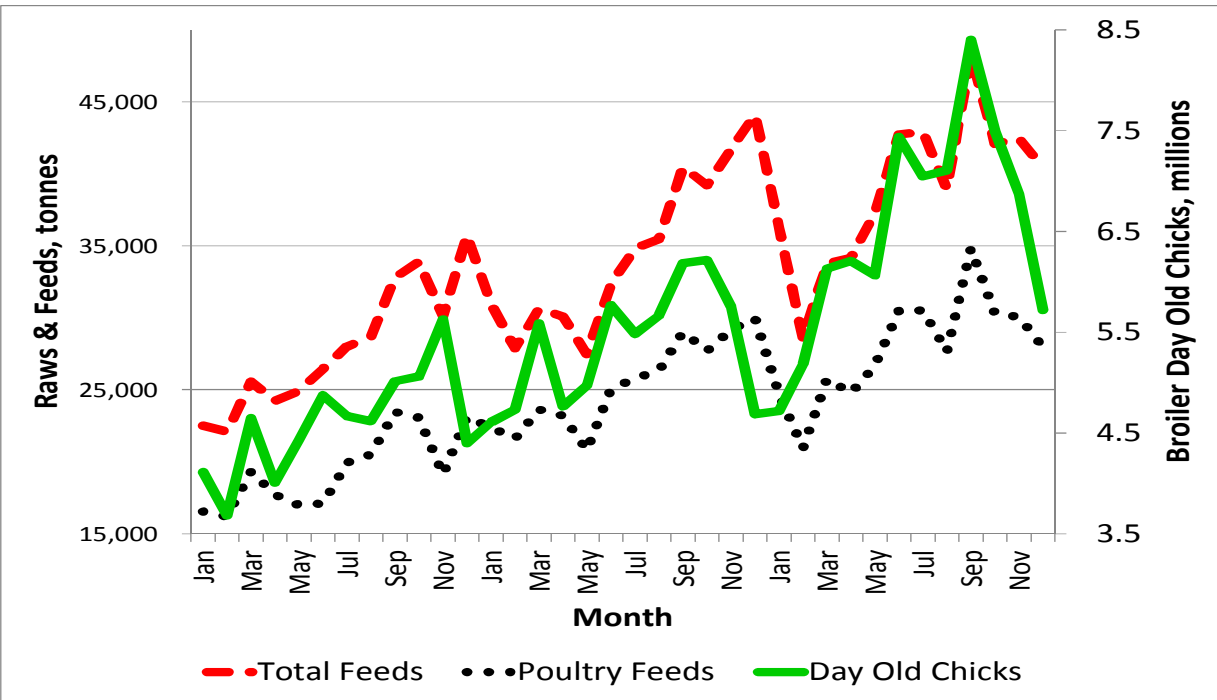


Figure 6a. Total and poultry feed production and broiler day old chick production, 2012 to 2014

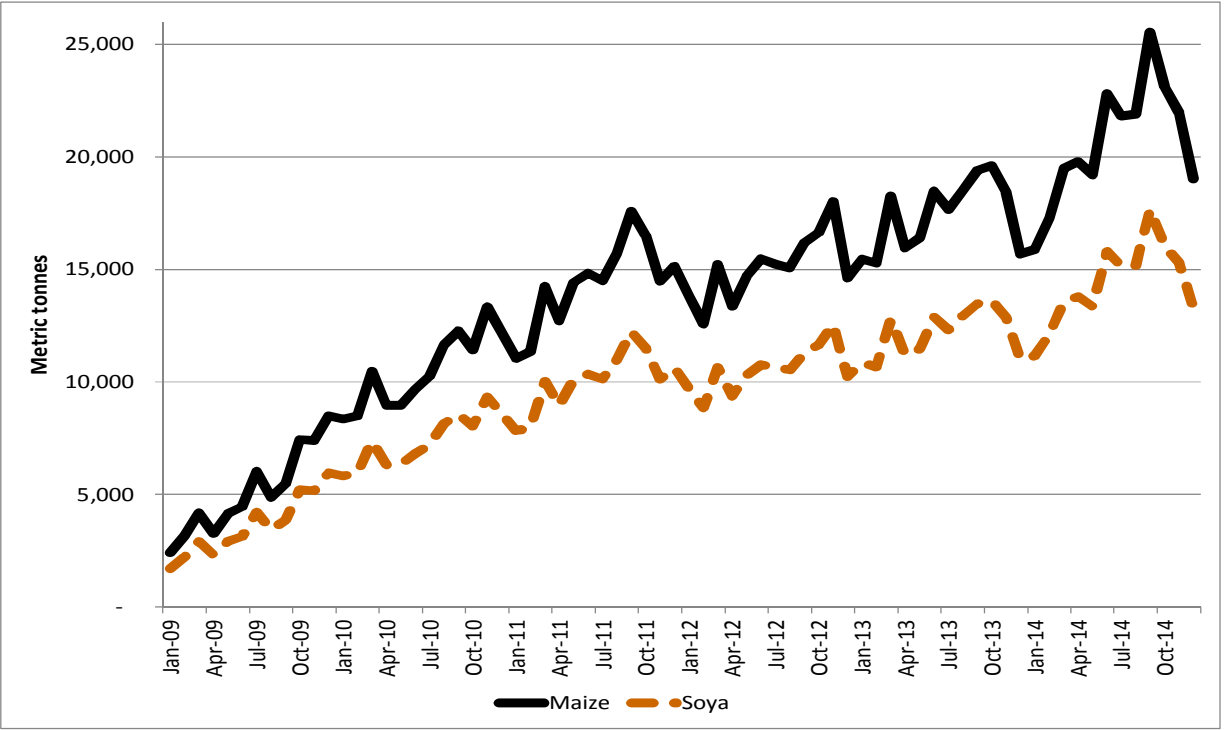


Figure 6b. Estimated total maize and soya bean equivalent consumption by the poultry industry, 2009 to 2014