



President Peter Steyl's Presentation to the 72nd
Congress of the Commercial Farmers' Union

Realizing Zimbabwe's
Agricultural Potential

INTRODUCTION



- **Revitalize Agriculture**
- **Build food and nutrition security**
- **Retool and Develop Irrigation**
- **Agro processing**
- **Markets**



Irrigation is the Key

- **Potential 2 million Ha**
- **Current developed irrigation 122 000 Ha**
- **6% of our potential**

A background image of a field of sunflowers at sunset. The sun is a bright yellow circle in the center, partially obscured by the dark, spiky heads of sunflowers. The sky is a mix of orange, red, and yellow, and the sunflowers in the foreground are dark and silhouetted against the bright light.

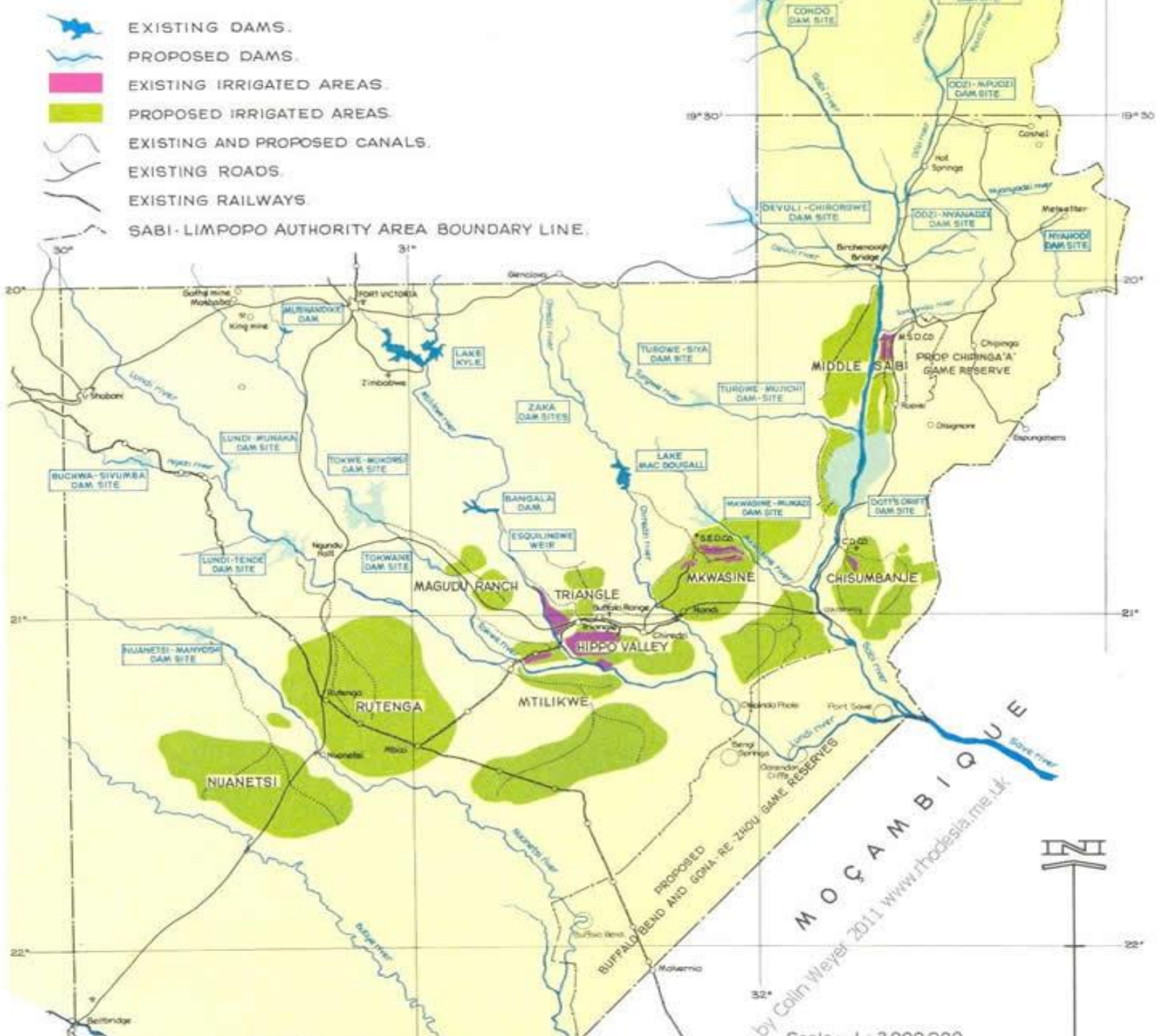
**The Golden Dawn Project
Runde and Save River basins**

first proposed in the 60s and 70s.

405 000 hectares under irrigation

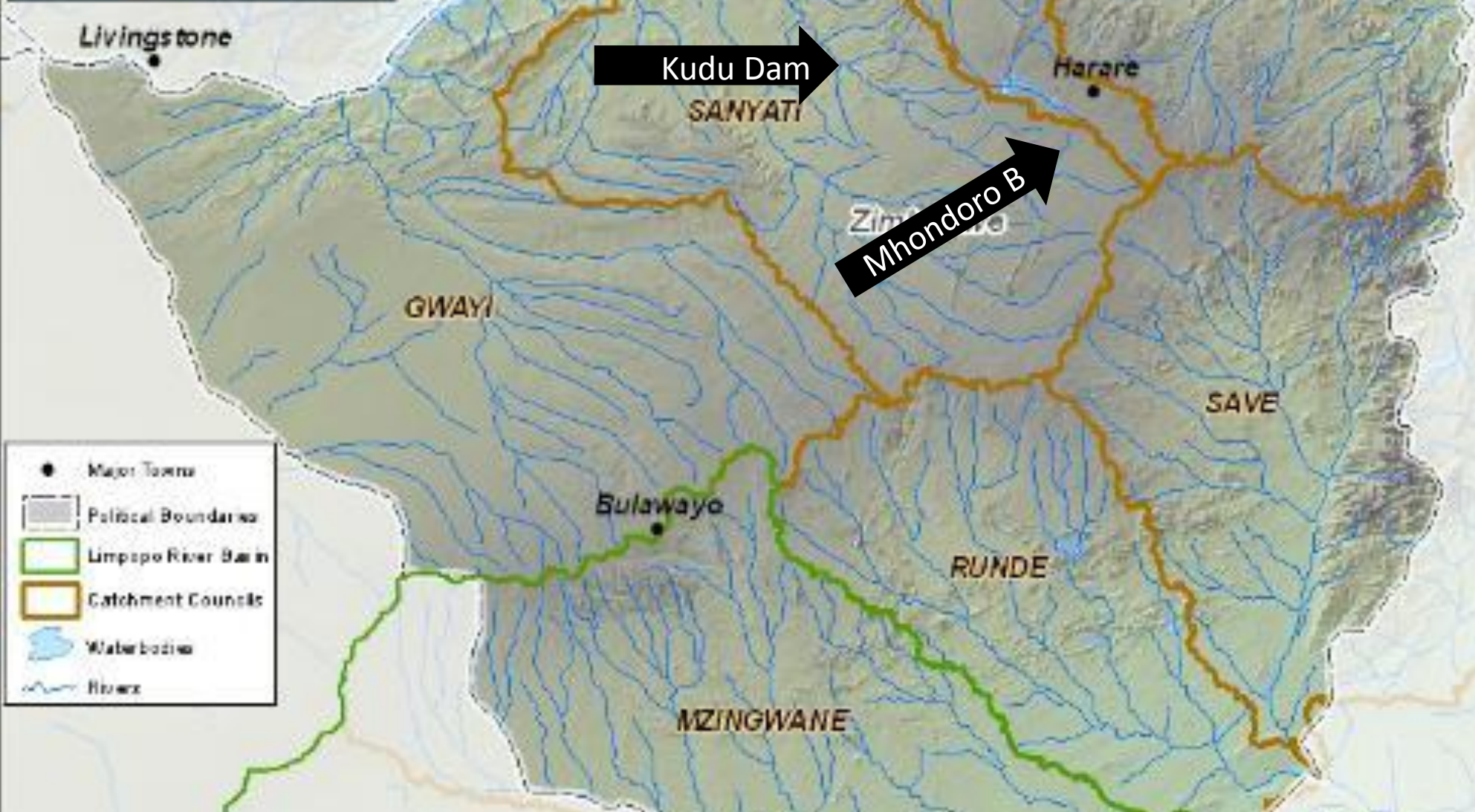
Costing US \$ 5.6 billion over 25 years.

-  EXISTING DAMS.
-  PROPOSED DAMS.
-  EXISTING IRRIGATED AREAS.
-  PROPOSED IRRIGATED AREAS.
-  EXISTING AND PROPOSED CANALS.
-  EXISTING ROADS.
-  EXISTING RAILWAYS.
-  SABI-LIMPOPO AUTHORITY AREA BOUNDARY LINE.

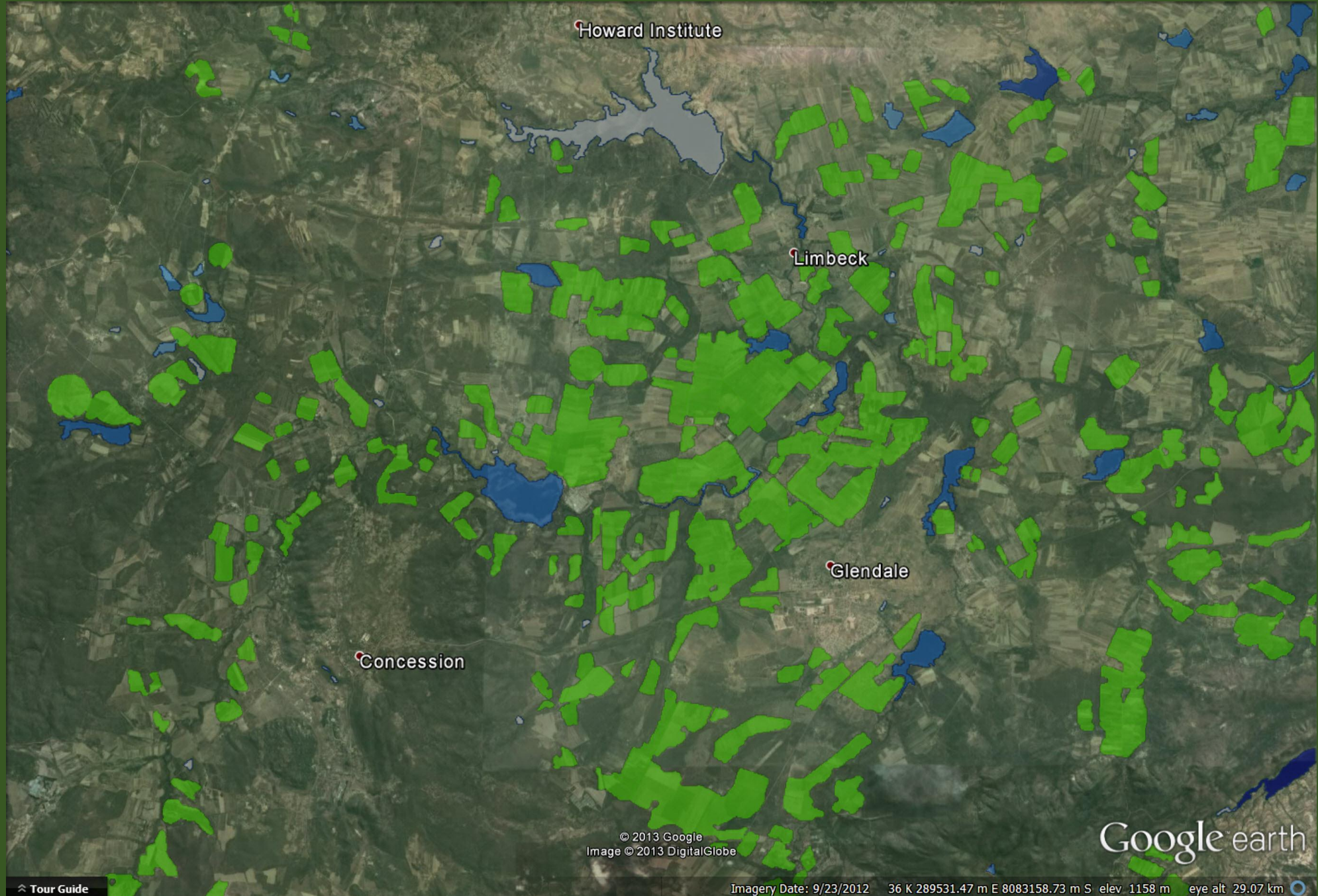


MOÇAMBIQUE
 by Colin Weyer 2011 www.rhodesia.me.uk

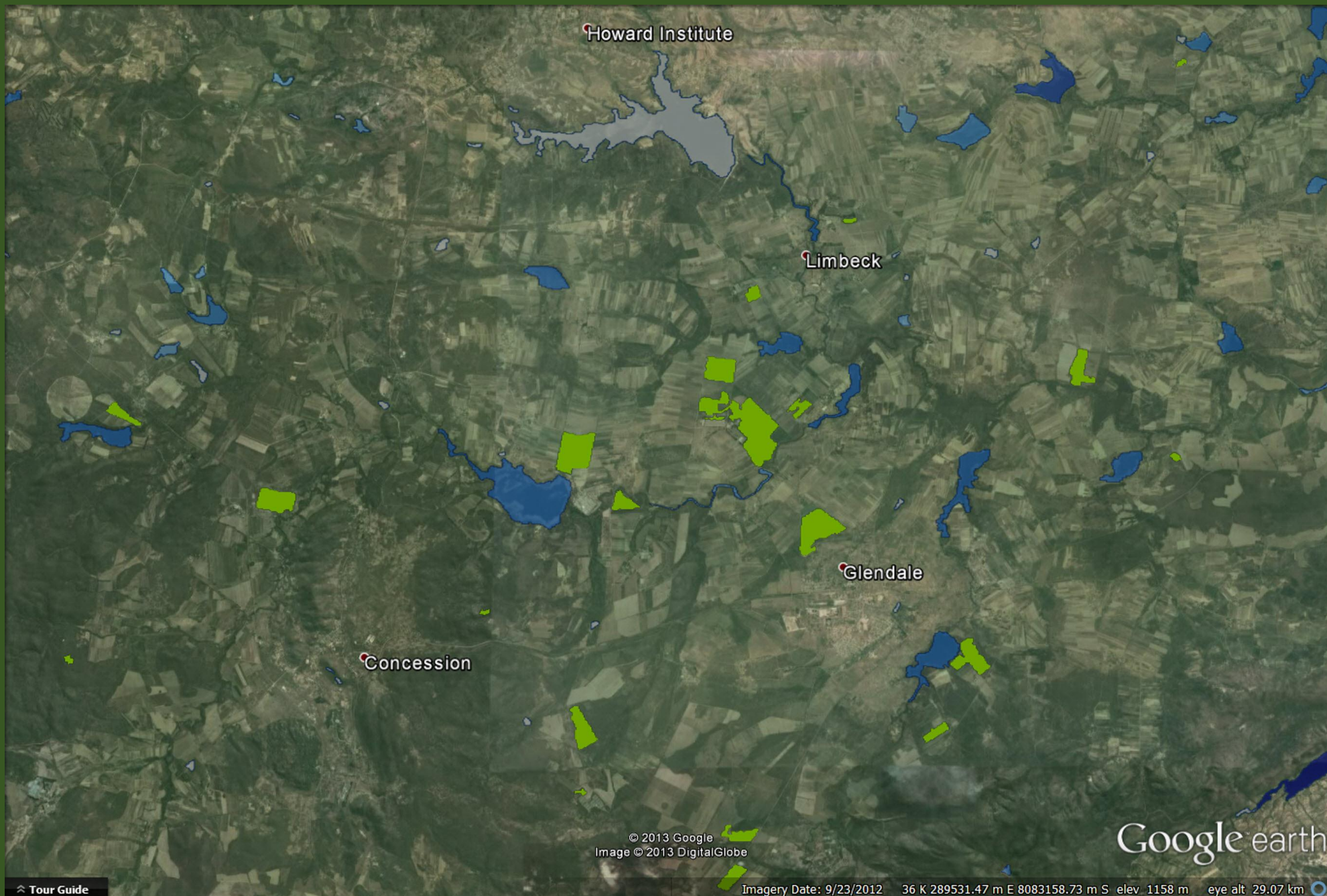




Zimbabwe Dams greater than 1 ha surface area (4485 dams) – with 2000 winter irrigation



Zimbabwe Dams greater than 1 ha surface area (4485 dams) – with 2013 winter irrigation



9/4/2006
2006 2015



N

Navigation controls including a compass, a vertical scale bar, and a street view pegman icon.

Image © 2015 DigitalGlobe

Google™ earth

2006

Imagery Date: 9/4/2006 17°08'50.66" S 30°29'45.79" E elev 1197 m eye alt 2.91 km

9/19/2015
2006 2015

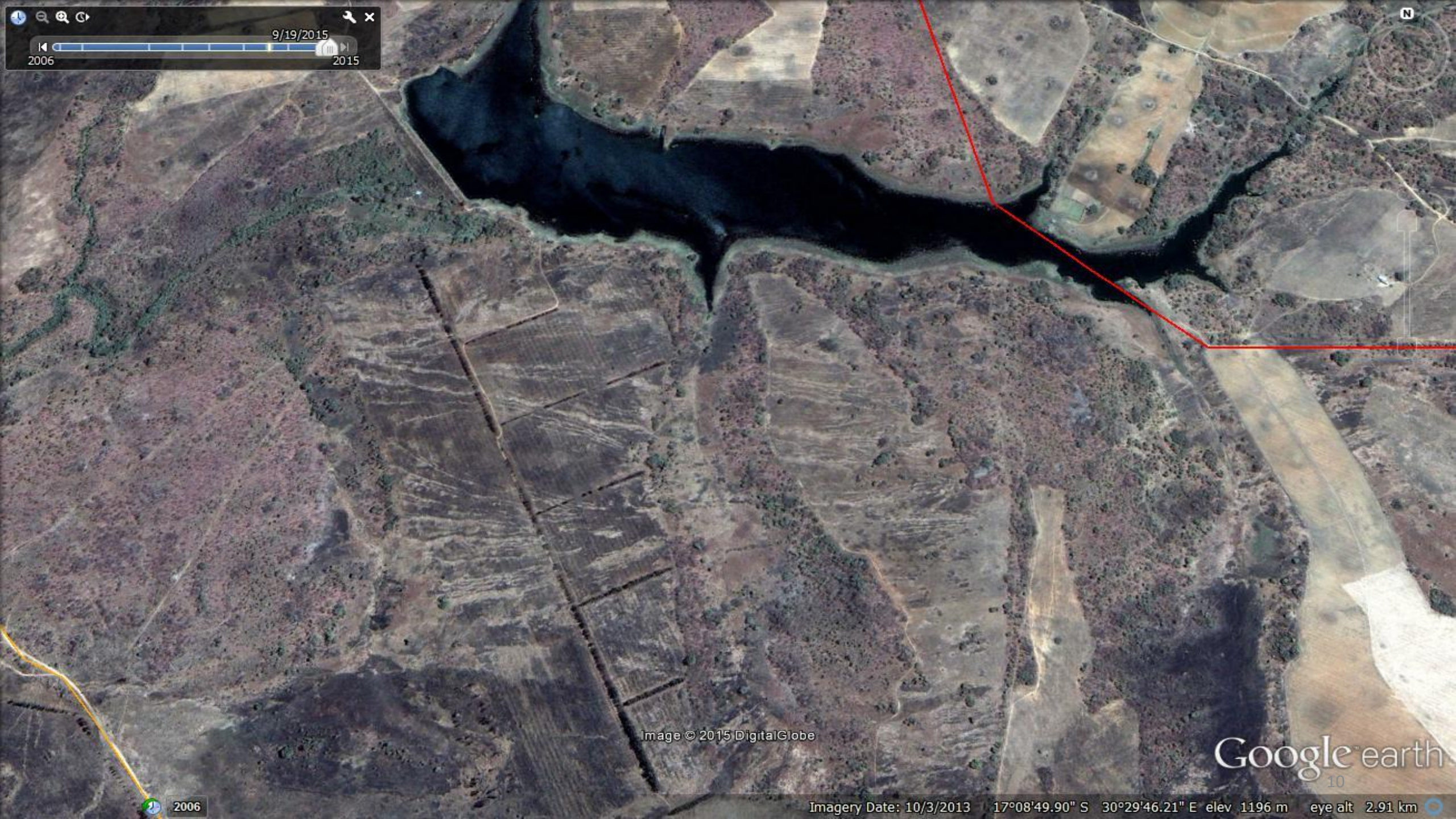


Image © 2015 DigitalGlobe

Google earth
10

2006

Imagery Date: 10/3/2013 17°08'49.90" S 30°29'46.21" E elev 1196 m eye alt 2.91 km



9/19/2015



Image © 2015 DigitalGlobe

Google earth

2006

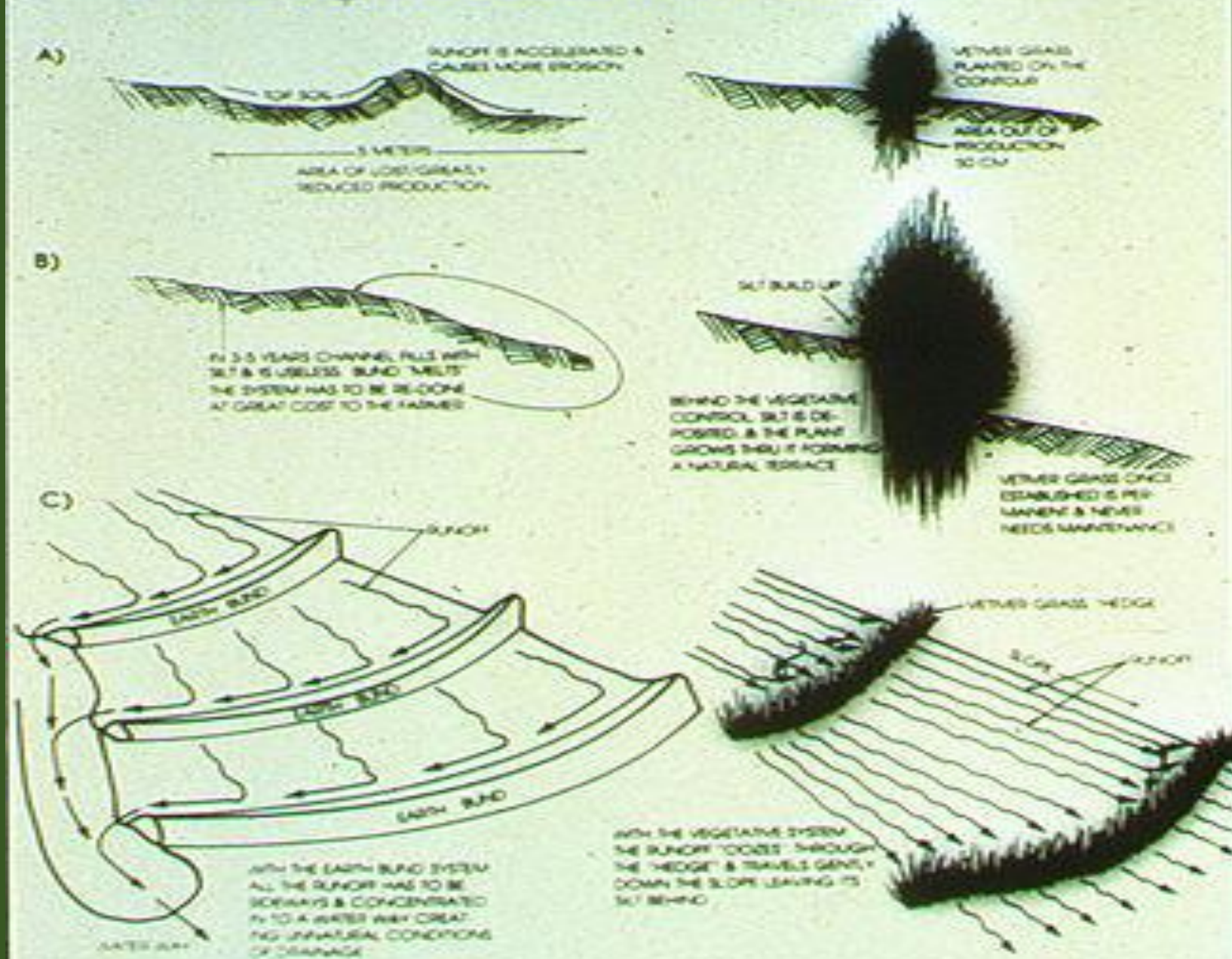
Imagery Date: 10/3/2013 17°08'34.82" S 30°29'44.17" E elev 1189 m eye alt 1.86 km

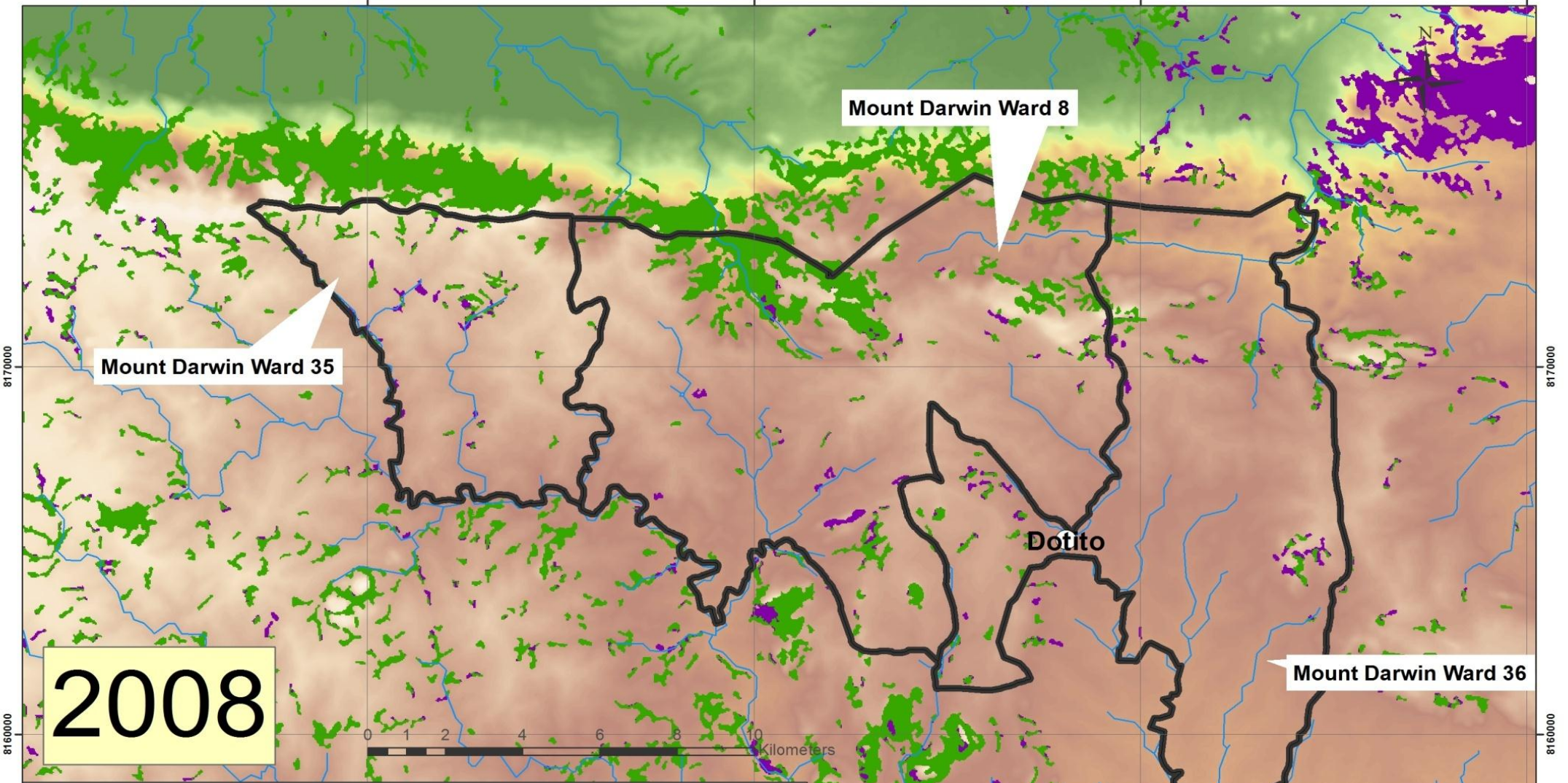
The Miracle of Vetiver Grass (*Chrysopogon zizanioides*).

- **Soil conservation and water quality management.**
- **Involves wide spread establishment of rows of vetiver grass to prevent soil erosion and river siltation.**



Figure XII: A DIAGRAMATIC COMPARISON OF MAN-MADE SOIL CONSERVATION MEASURES (EARTH BUNDS) VS PLANTED (NATURAL) VEGETATIVE MEASURES.





2008

**MOUNT DARWIN 1986-2008
DEFORESTATION**

*Mashonaland Central
REPUBLIC OF ZIMBABWE*

Scale = 1: 100,000

Map No.:

MAP DATA:
Deforestation
Landsat 5 Imagery Analysis
Aquired 11 May 1986
and 8 August 1986
and 23 May 2008
Compilation Date: 17 Sept 2012
Projection: UTM Zone 36S
Datum: WGS 1984

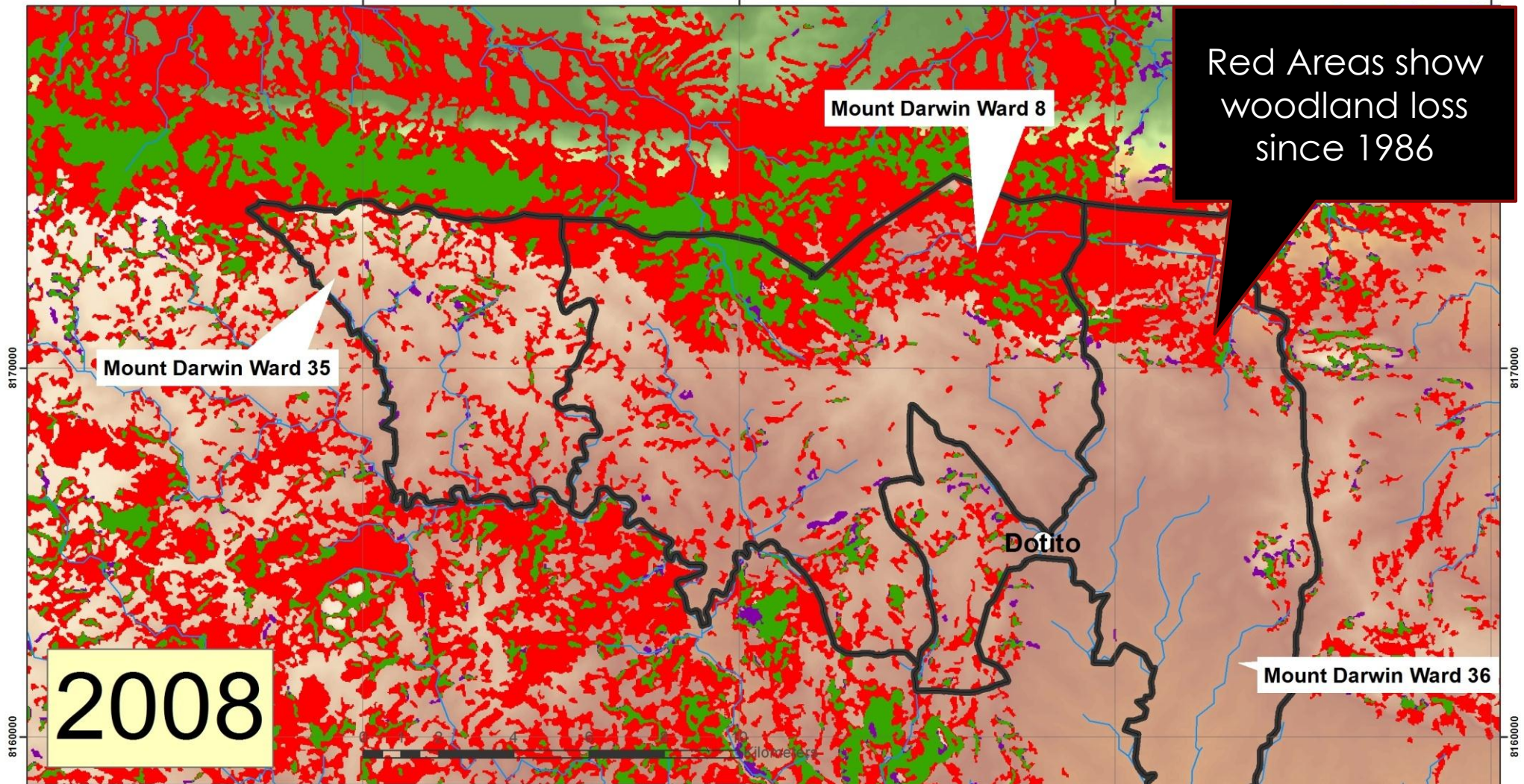
IMAGEN accepts no
responsibility for errors or
omissions on this map

Scale 1:100,000 if printed
at A3 Landscape

Imagen Consulting



(square kilometers)	Ward 8		Ward 35		Ward 36	
Ward Area	118.00		45.94		97.92	
1986 Forest Extent	42.64	36.14%	12.43	27.06%	17.78	18.16%
2008 Forest Extent	14.64	12.41%	2.23	4.85%	3.24	3.31%
Net Loss	32.01	27.13%	10.80	23.51%	15.51	15.84%
Net Gain	1.01	0.86%	0.60	1.31%	0.97	0.99%
Common	10.63	9.01%	1.63	3.55%	2.27	2.32%



2008

Red Areas show woodland loss since 1986

**MOUNT DARWIN 1986-2008
DEFORESTATION**

*Mashonaland Central
REPUBLIC OF ZIMBABWE*

Scale = 1: 100,000

Map No.:

MAP DATA:
Deforestation
Landsat 5 Imagery Analysis
Aquired 11 May 1986
and 8 August 1986
and 23 May 2008
Compilation Date: 17 Sept 2012
Projection: UTM Zone 36S
Datum: WGS 1984

IMAGEN accepts no
responsibility for errors or
omissions on this map

Scale 1:100,000 if printed
at A3 Landscape

Imagen Consulting



(square kilometers)	Ward 8		Ward 35		Ward 36	
Ward Area	118.00		45.94		97.92	
1986 Forest Extent	42.64	36.14%	12.43	27.06%	17.78	18.16%
2008 Forest Extent	14.64	12.41%	2.23	4.85%	3.24	3.31%
Net Loss	32.01	27.13%	10.80	23.51%	15.51	15.84%
Net Gain	1.01	0.86%	0.60	1.31%	0.97	0.99%
Common	10.63	9.01%	1.63	3.55%	2.27	2.32%

CATTLE INDUSTRY – Problems to address

- **Lack of Fencing**
- **Disease control**
- **Inbreeding**
- **Over grazing**



Re vitalizing the Cattle Industry

- National herd 5.3 million,
- Small scale 80% of these,
- Annual 3% off take equating to 120 thousand cattle per year.
- Opportunity to improve quality and off take

A Breeding Program for the Future and the Benefits associated with a good program

- Exploit good traits of indigenous breeds
- Introduce quality indigenous bulls
- Castrate calves in tandem with the removal of inferior bulls
- Rotate superior bulls between villages to prevent inbreeding.
- Higher calving rates and Lower mortality rates.
- Increased off take.

Creating an environment to realize our potential

- Create confidence by making secure, tradable and bankable land tenure for all Zimbabwe's farmers.
- Simple legal framework that foster equal rights and fairness which encourages investment in agriculture.
- Eradication all forms of Corruption
- Finalize compensation.

Skills Development, Research and New Technologies

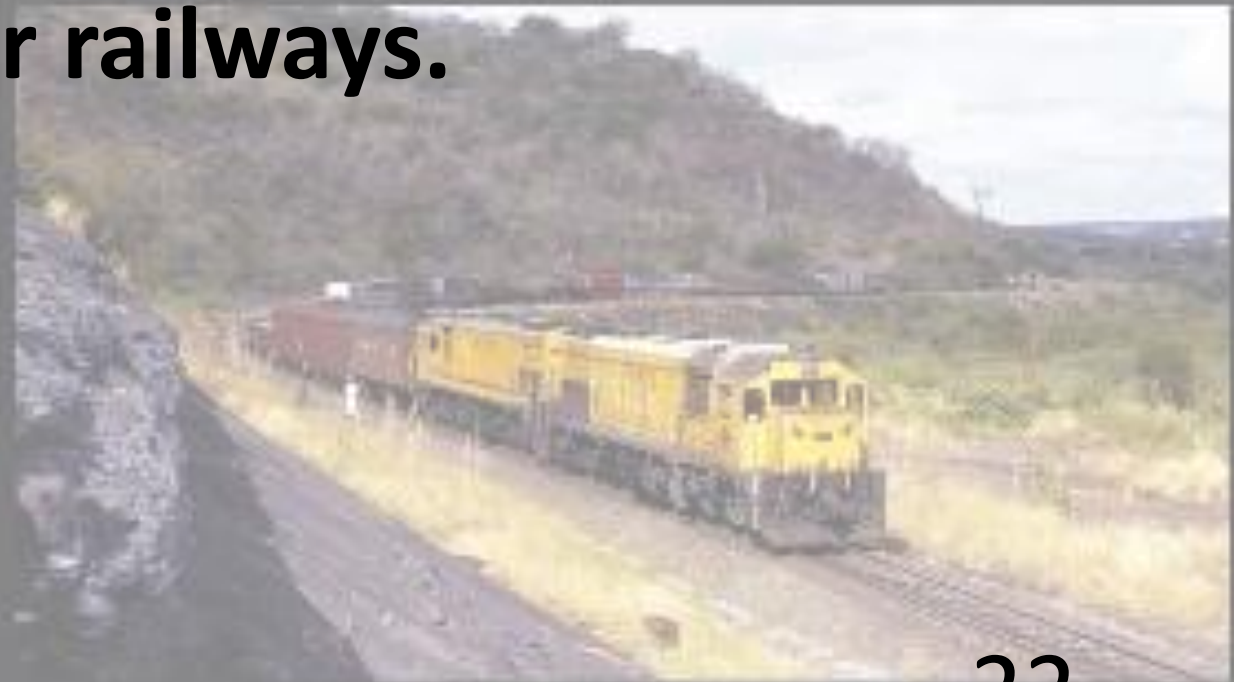
- **Farmers need to continuously improve skills.**
- **Embrace new technologies.**
- **Invest in research.**

Transport

- We need to upscale our rural road network

- We need to invest in our railways.

- Ease of Export



Electricity a driver of Agriculture

- **Improve the efficiency of network saves 300 MW**
- **Adopt Smart meters**
- **Incentivize the adoption of solar power**
- **Re consider Sable Chemicals. 115 MW irrigate 162 000Ha**

An investor friendly regulatory Framework

- Tax laws
- RDC levies
- Labour Laws

Farmer Representation

- The importance of Farmer Unions
- Unity
- A Regulatory Authority

An aerial photograph of a vast agricultural field, likely a cornfield, during sunrise or sunset. The sun is low on the horizon, casting a warm, golden glow over the scene. A road or path curves through the field on the right side. The overall atmosphere is serene and hopeful.

In Conclusion...

Lets Look to a new dawn in the future – the Jewel of Africa

A photograph showing a man in a blue uniform sitting on a large stack of white sacks. A wooden ladder leans against the stack, and other workers are visible in the background. The scene is set outdoors under a clear blue sky.

Tatenda, Siyabonga, Thank you