



THE WEEKLY AGRO WATCH



Zambia National Farmers' Union, Farmers Village, Showgrounds P.O Box 30395 Tel 260-1-252649 Fax: 260-1-252648 E-mail: znfu@zamnet.zm web: www.znfu.org.zm

14th November, 2016 Vol.3. No.46

WARMA GIVES FARMERS UP TO 31ST DECEMBER 2016 TO REGISTER ALL WATER FACILITIES

WARMA Management is urging all farmers with unregistered water facilities on farms to register by 31st December 2016. This follows ZNFU request to WARMA to allow farmers with unregistered water facilities to comply with the law given that most farmers had missed the advert by government in 2015. Registration fee for each dam or water structure is ZMW500. All applications **MUST be with WARMA** by the 31st of December 2016.

For those members who had already made applications to WARMA and are waiting for water permits, kindly **re-submit your applications to WARMA or ZNFU Head Office** but without the registration fee.

Kindly find below a check list to facilitate your water permit application. Please treat this matter with urgency as the amnesty by WARMA is only valid up to the end of this year 2016.

WATER RESOURCES MANAGEMENT AUTHORITY

APPLICATION FOR A WATER PERMIT

CHECKLIST

<input type="checkbox"/>	Application Fee (K500)				
<input type="checkbox"/>	Two copies of application forms				
<input type="checkbox"/>	A copy of Engineer's Report (To be done by WARMA)				
<input type="checkbox"/>	Title deed or a letter from the Chief if customary land				
<input type="checkbox"/>	Design Report of hydraulic structure				
<input type="checkbox"/>	Design drawing of hydraulic structure				For storage Permit
<input type="checkbox"/>	Hydraulic structure wholly on owner's property				
<input type="checkbox"/>	Does an application need an EIA?				
<input type="checkbox"/>	Is application advertised in the papers?				
<input type="checkbox"/>	Has Application been considered by WARMA TC?				
<input type="checkbox"/>	Has Application been considered by WARMA Board?				
	Approved	Denied	Deferred		
	Has client been written to?				
	Notified		Granted		
Remark	-----				

Submitted by -----

Received by-----

Verified by-----

Date -----

Exchange Rates

CURRENCY	15/11/2016						07/11/2016					
	US Dollar		RAND		GB Pound		US Dollar		RAND		GB Pound	
	Buy	Sell	Buy	Sell	Buy	Sell	Buy	Sell	Buy	Sell	Buy	Sell
FNB	9.72	9.92	0.69	0.71	12.11	12.35	9.70	9.90	0.72	0.73	12.06	12.30
Standard Chartered Bank	9.71	9.91	0.69	0.70	12.09	12.33	9.71	9.90	0.72	0.73	12.08	12.32
ZANACO	9.73	9.92	0.68	0.69	12.15	12.39	9.71	9.89	0.71	0.73	12.08	12.31
Bank of Zambia	9.79	9.84	0.690	0.694	12.17	12.23	9.73	9.78	0.72	0.73	12.09	12.16

Parity Prices

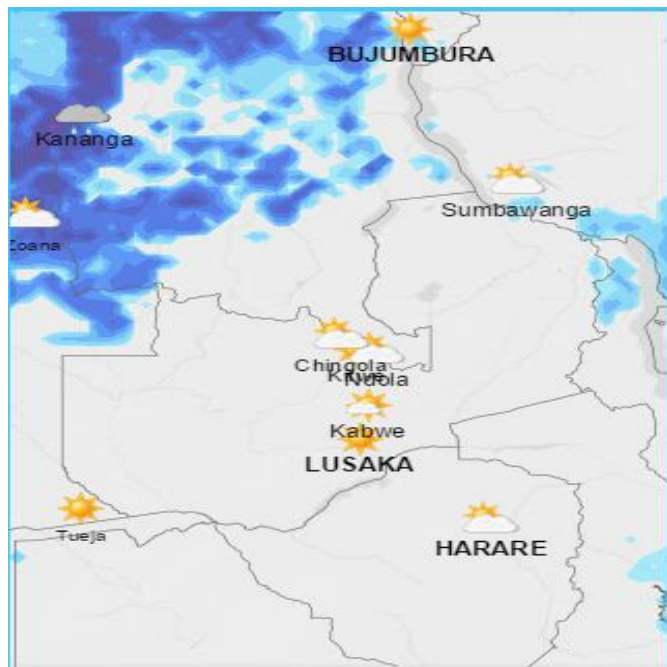
Domestic Import Parity Prices as at 11/11/2016					
US\$/ZAR=14.28 US\$/ZMW=9.9					
Parity Prices		U\$/ZMW	Maize	Soya	Wheat
Lusaka		9.9	428.02	617.21	468.56
Town	Ex-Lusaka freight (ZMW)	\$	\$	\$	\$
Chipata	275	27.78	455.80	644.99	496.34
Mkushi	225	22.73	450.75	639.94	491.29
Ndola	250	25.25	453.27	642.46	493.81
Kitwe	250	25.25	453.27	642.46	493.81

Note: Import parity based on December delivery

Export Parity Price Ranges (EPP) Harare-Lusaka as at 11/11/16	
Soya Beans	456.75-495.75
Wheat	393.37-437.25
Maize	261.7-310.5

Weather Forecast

The table below summarizes the weather forecast for some selected towns for the period 16th to 22nd November, 2016.



TOWN	WEATHER SUMMARY
Ndola	<ul style="list-style-type: none"> Rains in the range of 0.9- 5mm forecast for most of the week except for the 18th & 22nd when it's expected to be partially cloudy. Average daily Temps: 18-31°C
Mkushi	<ul style="list-style-type: none"> 0.6mm, 4mm & 3.3mm forecast for the 16th, 17th & 20th with the rest of the week being partially cloudy. Average daily Temps: 19-31°C
Kabwe	<ul style="list-style-type: none"> 0.8mm, 0.7mm & 0.7mm forecast for the 16th, 17th & 22nd with the rest of the week being partially cloudy. Average daily Temps: 20-31°C
Lusaka	<ul style="list-style-type: none"> 3.6mm, 2.3mm & 1.1mm forecast for the 16th, 20th & 21st with the rest of the week being partially cloudy. Average daily Temps: 19-32°C
Mazabuka	<ul style="list-style-type: none"> 0.7mm & 1.3mm of rain showers forecast for the 17th & 20th respectively. The rest of the week will be partially cloudy. Average daily Temps: 21-33°

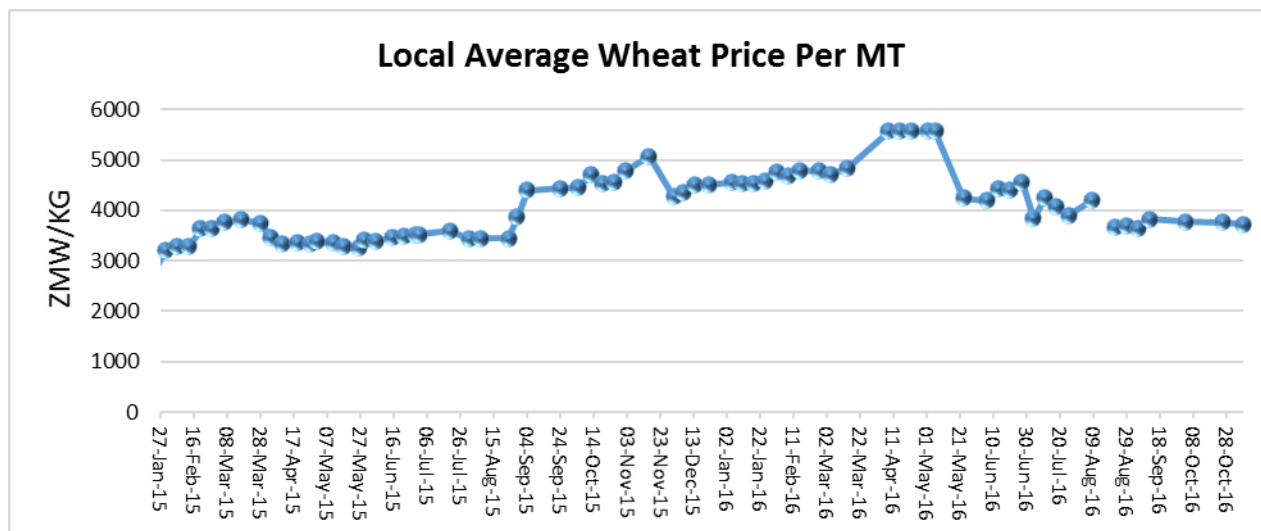
Choma	<ul style="list-style-type: none"> 1.3mm & 2.2 mm of rain showers forecast for the 20th and 21st while the 22nd is anticipated to be cloudy and the earlier part of the week partially cloudy. Average daily Temps: 18-30°C
Livingstone	<ul style="list-style-type: none"> 16th – 19th is expected to have partially cloudy skies and rains in the range of 2-8.6mm the rest of the week. Average daily Temps: 21-33°C
Mongu	<ul style="list-style-type: none"> Rain showers forecast for the 16th and partially cloudy skies on the 17th to 19th with rains in the range of 2.2mm to 10mm between the 20th and 22nd. Average daily Temps: 21-34°C.
Mansa	<ul style="list-style-type: none"> Normal rains of not more than 3.5mm forecast for most of the week save for the 22nd when heavy rains totaling 10.7mm are anticipated Average daily Temps: 19-30°C.
Kasama	<ul style="list-style-type: none"> Partially cloudy skies forecast for the 16th & 22nd with rains of up to 5.5mm forecast for the rest of the week. Average daily Temps: 18-30°C.
Solwezi	<ul style="list-style-type: none"> Rainfall forecast throughout the week. Average daily Temps: 18-29°C.
Chipata	<ul style="list-style-type: none"> Rains in the range of 0.5mm to 3.5mm forecast throughout the week save for the 22nd when it is anticipated to be partially cloudy. Average daily Temps: 20-32°C.

Source: Norway meteorological Institute

Wheat

Highlights

- The International futures price of hard red wheat for December Delivery opened trading at US\$ 150.65/ton on 14th November 2016.
- Locally, the harvesting period has come to an end and marketing is currently going on. Despite the reduced crop, farmgate prices have crushed to as low as US\$340/ton in some cases this marketing season and some farmers are still holding uncommitted stocks. Average trader prices around the milling centers such as Lusaka and Copperbelt are about US\$385/ton.



Source: ZNFU Market Price Information System

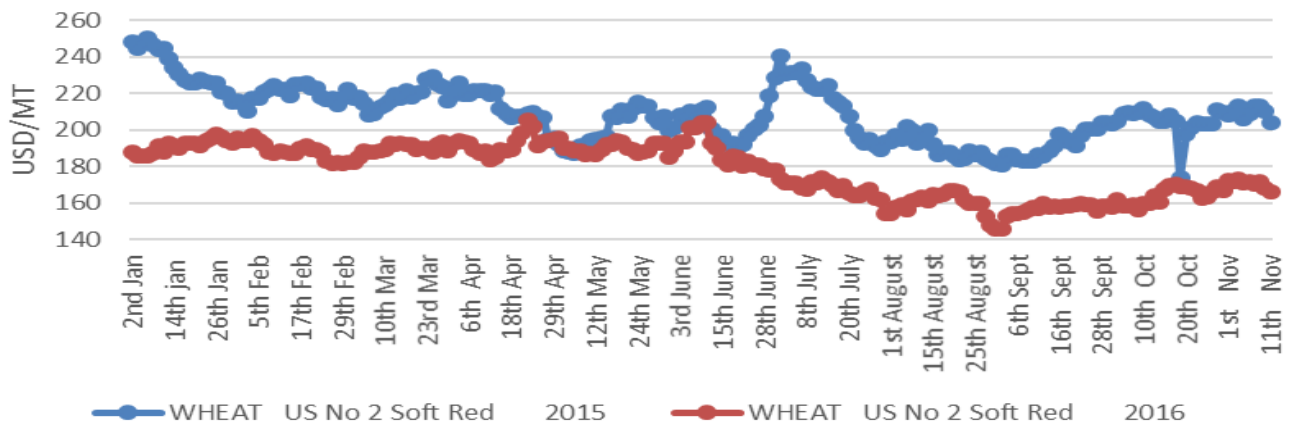
International Price trends

The Safex international soft red and hard red wheat prices averaged US\$151.24/MT and US\$169.42/MT during the week ending 11th November 2016. respectively. All prices are fob gulf.

ZNFU CORPORATE SPONSORS



International Wheat(US #2 Soft Red) Price Trend



Source: Safex

Soya Beans

Highlights

- While soya beans plantings have begun in Argentina, the plantings are about 45.5% slower on a year-on – year comparison. The final area planted is estimated at 19.6 million hectares, down 2.5% from last year and the lowest area planted by Argentina in five years. Adoption of less supportive soya beans tax policy in comparison to maize is the major reason behind the reduced interest in the oilseed by farmers in Argentina. Argentina is currently the third largest producer of soya beans in the world and hence shifts in its production have an influence on international prices.
- U.S. soybean futures on CME for January 2017 delivery opened trading at US\$363.61/ton on 14th November 2016.
- Zambia's local trader offer prices is currently averaging US\$520/ton. Exports of soya beans are currently going on.

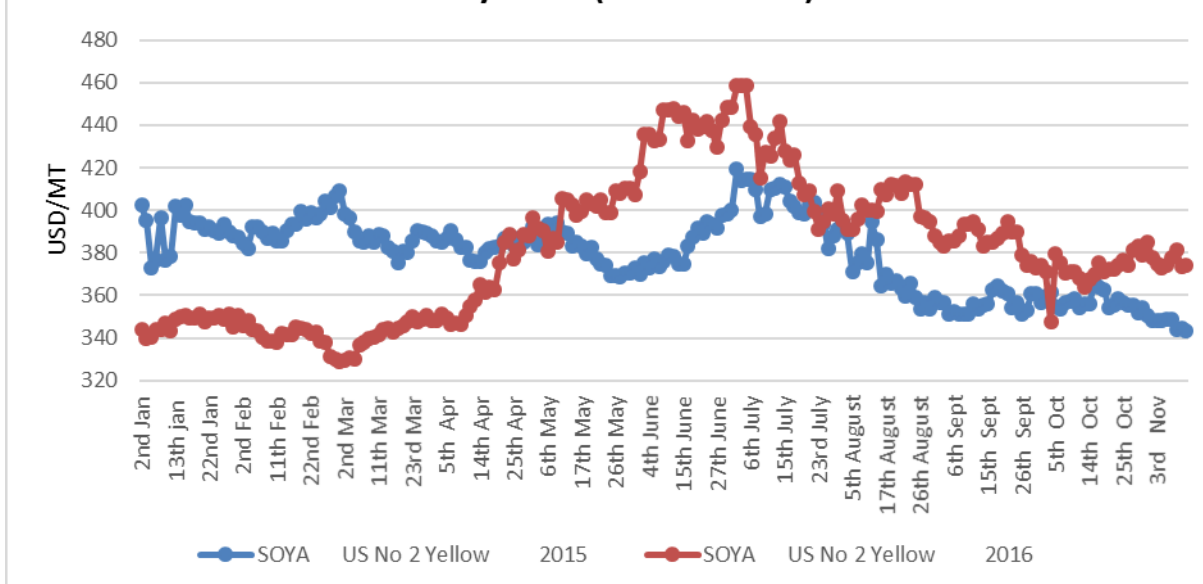
International Price trends

International spot prices for US No. 2 yellow soya beans on Safex averaged US\$376.21/MT in the week ending 11th November 2016 posting a drop of 0.41% from the price recorded in the previous week. Prices are fob gulf.

ZNFU CORPORATE SPONSORS



International Soybeans (US #2 Yellow) Price Trend



Source: Safex

Maize

Highlights

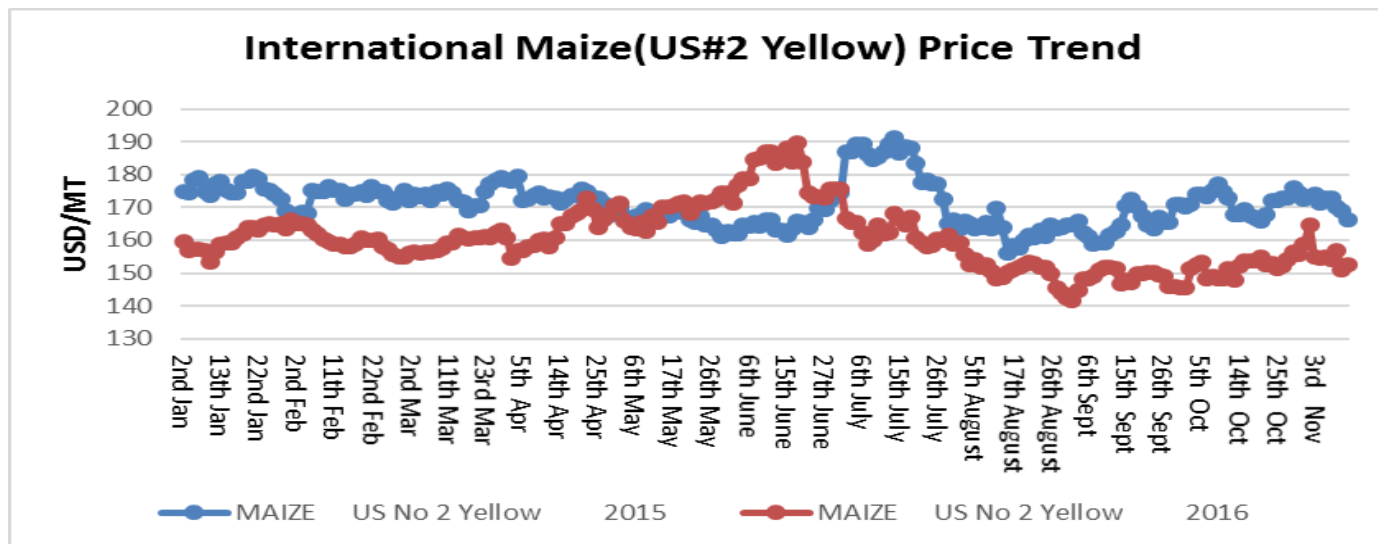
- The United States Department of Agriculture has forecast an increase in the global maize output for the 2016/17 year to about 1.03 million tons from the 960million estimated production in the previous year. Maize harvests in the Northern hemisphere are nearly complete and confirming abundant supplies. Meanwhile plantings in the Southern hemisphere are expected to increase as well. Global trade is also anticipated to be high, driven by demand from Iran and Saudi Arabia.
- U.S. maize futures on CME for December 2016 delivery opened trading at US\$134/ton on 14th November 2016.
- On the local scene, the tenders for supply of maize to the Food Reserve Agency closed yesterday, Monday 14th November 2016. Markets are anxious to see the outcome as government has restrained exports of maize until FRA meets its strategic reserve requirements of 500,000MT. Meanwhile market indications are that the private sector still has large stocks of maize.
- Various players in the maize value chain have bemoaned the proposed 10% maize export duty in the 2017 national budget as this will negatively affect the competitiveness of Zambia's maize.
- The national local maize offer price by private traders is averaging US\$240/ton.

Price trends

ZNFU CORPORATE SPONSORS



International maize spot prices traded at an average of US\$ 153.86 during the week ending 11th November 2016. All prices are fob gulf.



Source: Safex

Crude oil

- Rising US rig count and worries over possible oversupplies by OPEC have supported the continued decline in international crude oil prices.
- The Dubai Mercantile exchange Oman crude oil marker price for December delivery was settled at US\$42.42/barrel on 11th November 2016.
- Brent crude oil futures were pegged at US\$44.67 barrel by 11:56hrs CAT 11th November 2016.

Brent Crude Oil Futures \$/barrel



Source: BBC, 2016.

ZNFU CORPORATE SPONSORS



Beef

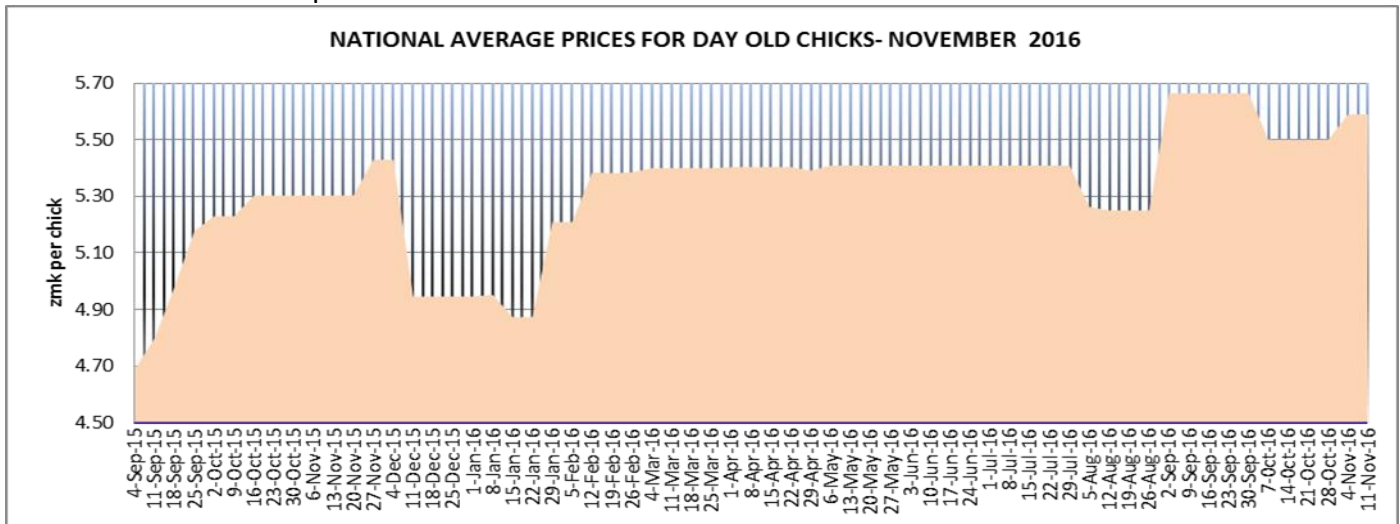
Highlights

- The Beef site has indicated that Experts from Scotland's Rural College are urging livestock farmers to beware of an increased risk of feed contaminated with ergot. Ergot is a cereal fungus and grains to be consumed are not to exceed a limit of 0.01g of ergot per Kg of grain. initial effects of ergot include lameness and mild diarrhoea which can later develop to restricted blood circulation to body extremities and eventual death of animals.
- Namibian Grade A beef prices for the week ending 14th November 2016 were in the range of ZAR30.9-37.19/Kg. Meanwhile auction prices for weaners and heifers were about ZAR 13.75/Kg and ZAR18.28/Kg on 11th November 2016.
- Dressed weight beef offer prices are still averaging ZMW19.5/kg on the local market.

Poultry Updates for the Week Ending 11th November 2016

National Average Prices of Day Old Chicks

The prices for the day-old chicks remained unchanged for the week. The national average prices for the day-old broiler chick was still trading at an average price of ZMW 5.59 per day old chick. In the same vein, there were no movements in the prices for the day-old pullets which are averaging ZMW 9.45 for ISA brown whilst Roman brown is costing ZMW 6.8 per bird. The prices for Redbro birds have also been maintained at ZMW6.0 per bird.



Source: Poultry Association of Zambia

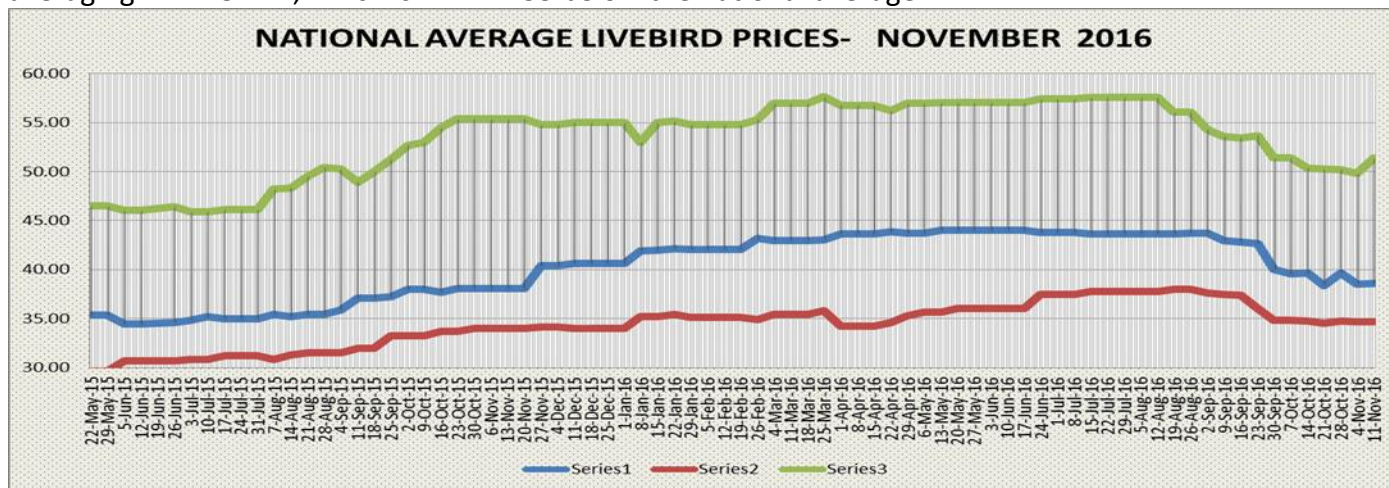
National Average Live Bird Prices

The national average prices for live chicken have continued to show some stability. The national average price of a live broiler bird was still averaging at ZMW 38.53 which is ZMW0.03 lower than the price of ZMW 38.56 recorded the previous week. The ex-layer prices remained at ZMW 34.70/bird. The price of village chicken posted an increment of ZMW 1.04, and was selling at a national average price of ZMW 51.38/bird

ZNFU CORPORATE SPONSORS



compared with ZMW 49.98 recorded the previous week. It must be noted that these prices differ from one district to another. In Lusaka’s Soweto market and Mtendere market, the prices have drastically reduced averaging ZMW 34.22, which is ZMW 4.55 below the national average.



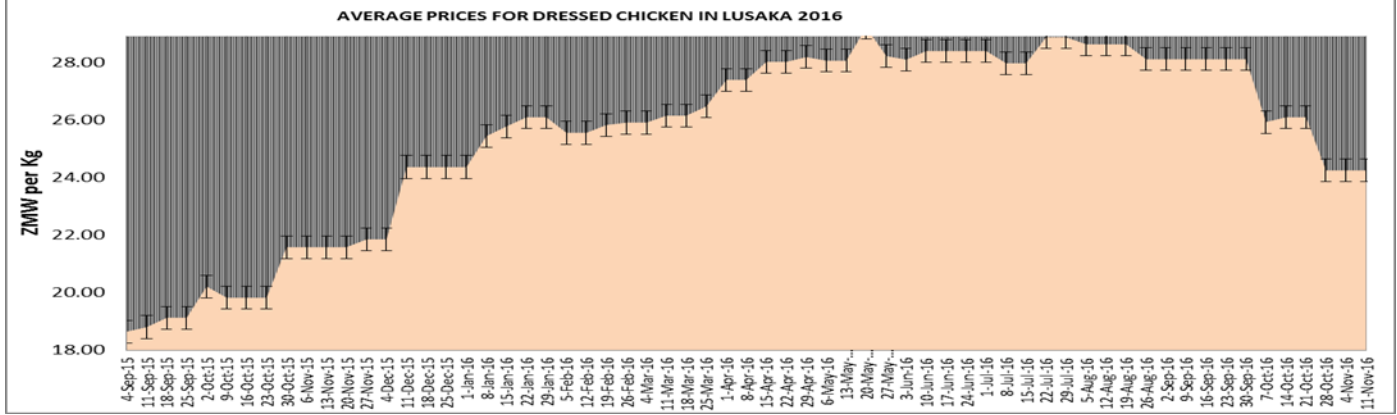
Source: Poultry Association of Zambia

Average Whole Dressed Chicken Prices - Lusaka

There were no significant movements in the prices of frozen chickens in some super markets in Lusaka. A number of chicken processors have continued running promotional sales. The average price for the whole frozen chicken in Pick n’ Pay was ZMW 24.99 per kg while the lowest priced whole frozen chicken was selling at ZMW20.99 per kg and the highest priced whole going for ZMW28.99 per kg. The price of frozen chicken in SPAR was ranging between ZMW23.25 per kg and ZMW33.80 per kg. The average price for frozen whole chicken in Shoprite outlets was still trading at ZMW19.99 per kg for the lowest priced and ZMW28.49 per kg for the highest priced. Frozen whole chicken in Zambeef outlets was still trading at ZMW22.99 per kg last week and ZMW29.45 per kg in Melissa Supermarket outlets. The graph below shows the average price trend for the whole frozen chicken in Lusaka for a one year period from September 2015 – 28th October 2016.

ZNFU CORPORATE SPONSORS

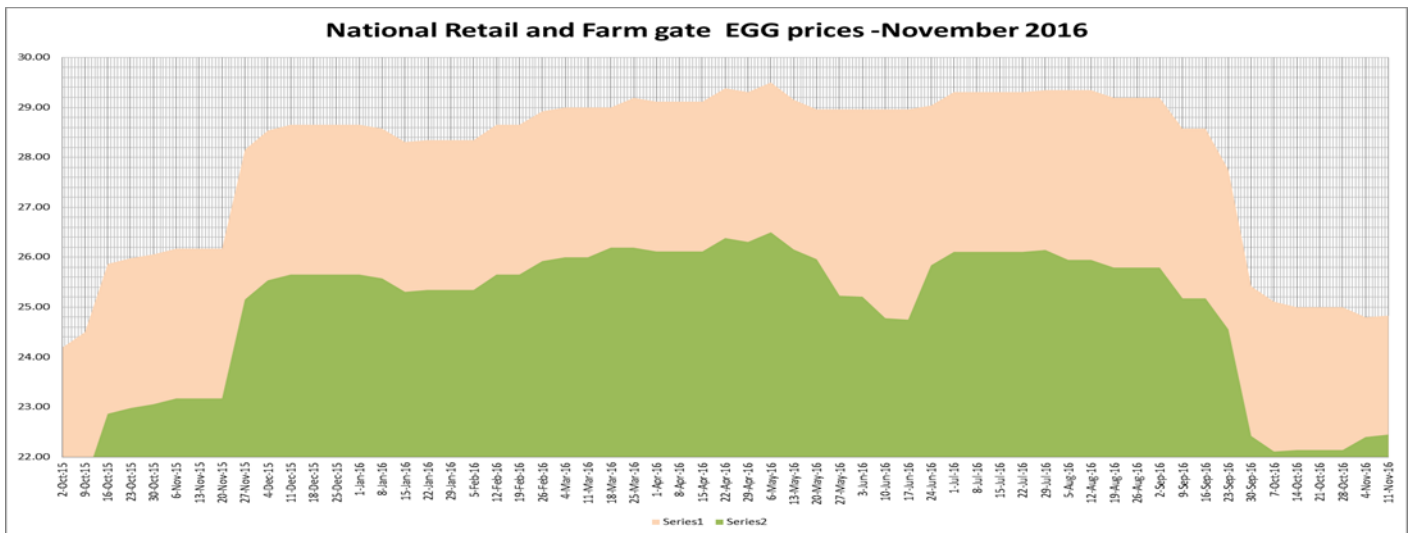




Source: Poultry Association of Zambia

National Average Egg Prices

The national average egg price continued to show some stability in the past two weeks with retail prices trading at a national average price of ZMW 24.80 per tray. The farm gate price on the other hand gained a ZMW 0.3 per tray to an average price of ZMW 22.74 per tray last week compared with a ZMW 22.4 obtained the previous week. The delivery prices at Soweto, which is the biggest market in Lusaka, were averaging ZMW 16/tray for pullet eggs, ZMW18/tray for medium eggs and ZMW2/tray1 for large eggs. The retail prices at the same market were averaging ZMW1/tray8 for pullet eggs, ZMW21/tray for medium and ZMW 25/tray of large eggs. On the other hand, the retail egg prices in the chain stores in Lusaka were still averaging ZMKW27.99 per tray for mixed tray of 30 eggs, ZMW 34.99/tray for medium and ZMW 35.99 per tray for large eggs. The quail eggs remain unchanged, trading at an average price of ZMW17.49 per tray



Source: Poultry Association of Zambia

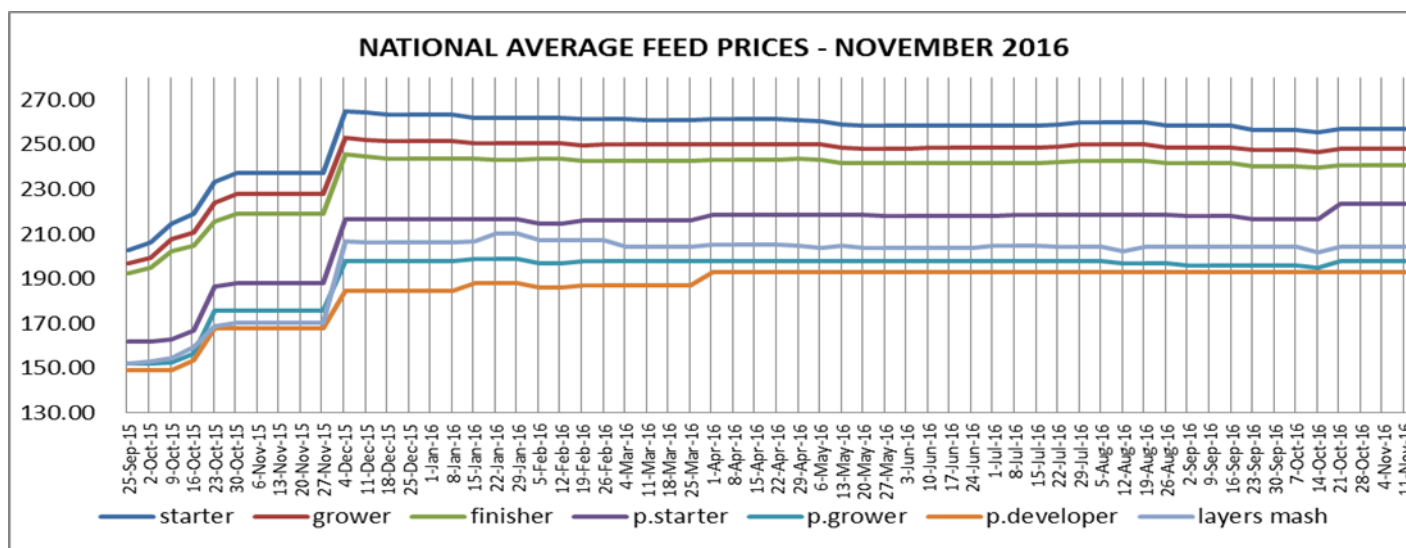
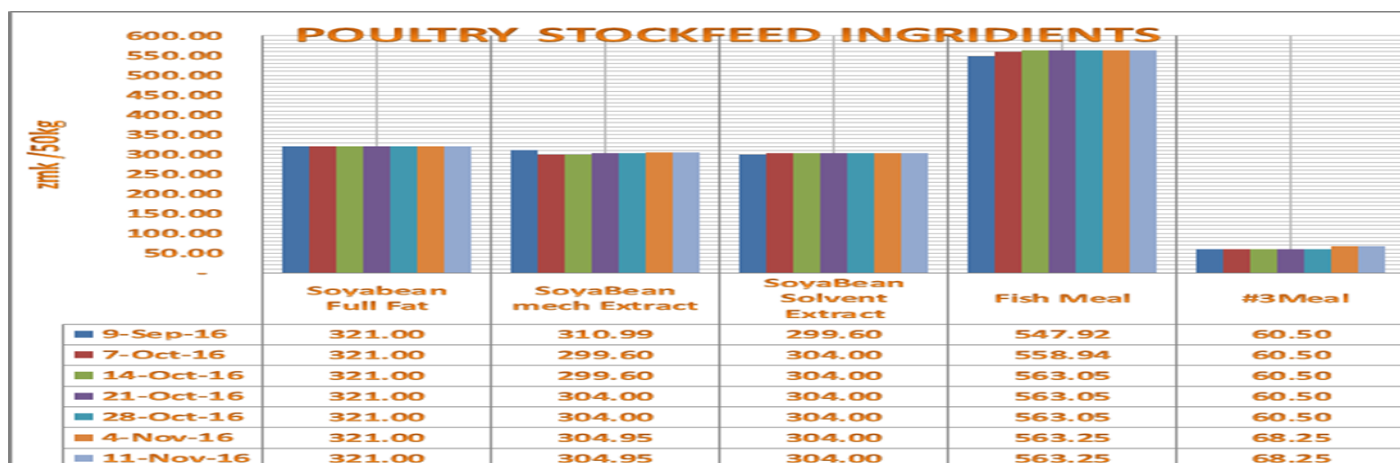
LIVESTOCK SERVICES CO-OPERATIVE SOCIETY



Average Prices of Selected Stockfeed and Stockfeed Ingredients

There were no movements in the prices of stockfeed for all the stockfeed brands for broiler and layer birds last week. National average prices for broiler starter was still trading at ZMW 256.8, broiler grower at ZMW 248.27, while broiler finisher was trading at an average price of ZMW 240.68 per 50kg bag. Layer feed was trading at ZMW193/50Kg and ZMW223/50Kg for pullet developer and pullet starter respectively. The chart below outlines the prices of some of the ingredients for poultry stockfeed as captured at Livestock Services. Number three meal was trading at ZMW 68.25 per 50kg bag compared with the ZMW 60.5 obtained last week, representing a 13% price increase.

On the other hand, no price movements have been observed on the major protein stockfeed ingredients. Soya Meal Mechanically Extracted was still trading at ZMK 304.95/50Kg, Fish Meal at ZMW 563.25/50Kg, Soyameal full fat and Soyameal solvent extracted at ZMK 321.0 and ZMK 304.00 per 50Kg bag respectively. These indicative prices are obtained from Livestock Services limited and may change from time to time.



Source: Poultry Association of Zambia

ZNFU CORPORATE SPONSORS



ZNFU CORPORATE SPONSORS

