



Stockfeed Manufacturers Association  
Exhibition Park, Samora Machel Avenue West, Belvedere  
P. O. Box BE209, Belvedere, Harare  
Phone: 04-756 600, 772 915, 777391  
Email: [admin@lit.co.zw](mailto:admin@lit.co.zw)

## **Raw Materials Usage and Feed Production Returns**

**September 2016**

The Stockfeed Manufacturers Association raw materials procurement, feeds manufactured and average prices for the period January 2012 to September 2016 are summarised in the tables and graphs below.

Returns were collated from the following companies: Berghaan Feeds, Capital Feeds, Country Feeds, Feedmix, Fivet Animal Health, Hamara Feeds, Hyperfeeds, Ice Feeds, Irvine's Zimbabwe, Lake Harvest, Meadow Enterprises, National Foods Ltd, Profeeds, Triple C Pigs and Windmill.

Monthly procurement of raw materials and production of stockfeeds in the third quarter of 2016 averaged 42,351 and 43,288mt respectively, representing decreases of 9 and 8% respectively over the same period in 2015. The value of raw materials procured and feeds produced were \$15.6m and \$21.6m/month, respectively, which were decreases of 7% and 12% respectively over the same period in 2015.

Maize and soya procurements during the third quarter constituted the bulk of raw material used, accounting for 70% of all raw materials procured by weight and 76% by monetary value. Average monthly procurement of maize and soya bean equivalent in the third quarter of 2016 were 18,827mt (worth \$6.3m) and 10,963mt/month (\$5.6m) respectively and represents growth for the quarter of 0% (9% in value) and -18% (-20% in value) over the same period in 2015, respectively.

Manufacture of poultry feeds continued to dominate the stockfeed industry during the third quarter of 2016 with a monthly average of 29,404mt (worth \$16.1m), a decrease of 8% in quantity and 11% in value over the same period in 2015. Poultry feeds accounted for 68% of all feeds produced by weight and 75% by monetary value. By comparison, pig and ruminant feeds accounted for 7% and 11% of the total value of feeds produced, respectively.

Over the period July to September, production of broiler starter, grower and finisher feeds decreased by 17, 4 and 8%, respectively, compared to the same period last year. Layer rearing and production feeds decreased by 23% and 4% respectively.

The average price of the following key raws procured in the third quarter of 2016 increased compared to prices in the second quarter: maize, 6%; solvent extracted soya meal, 3%; maize bran, 7%; low-protein cottonseed cake, 4%; high-protein cottonseed meal, 5%; whole cottonseed, 14%; and cottonseed hulls, 6%. Despite the increases in prices of maize and soya meal, the average weighted broiler and layer feed prices in the third quarter were \$583 and \$470/mt, respectively, both 0 and 2% lower than prices in the second quarter of 2016 and implying reduced margins for feed manufacturers.

### Tonnages of Raws Procured - January 2012 to September 2016

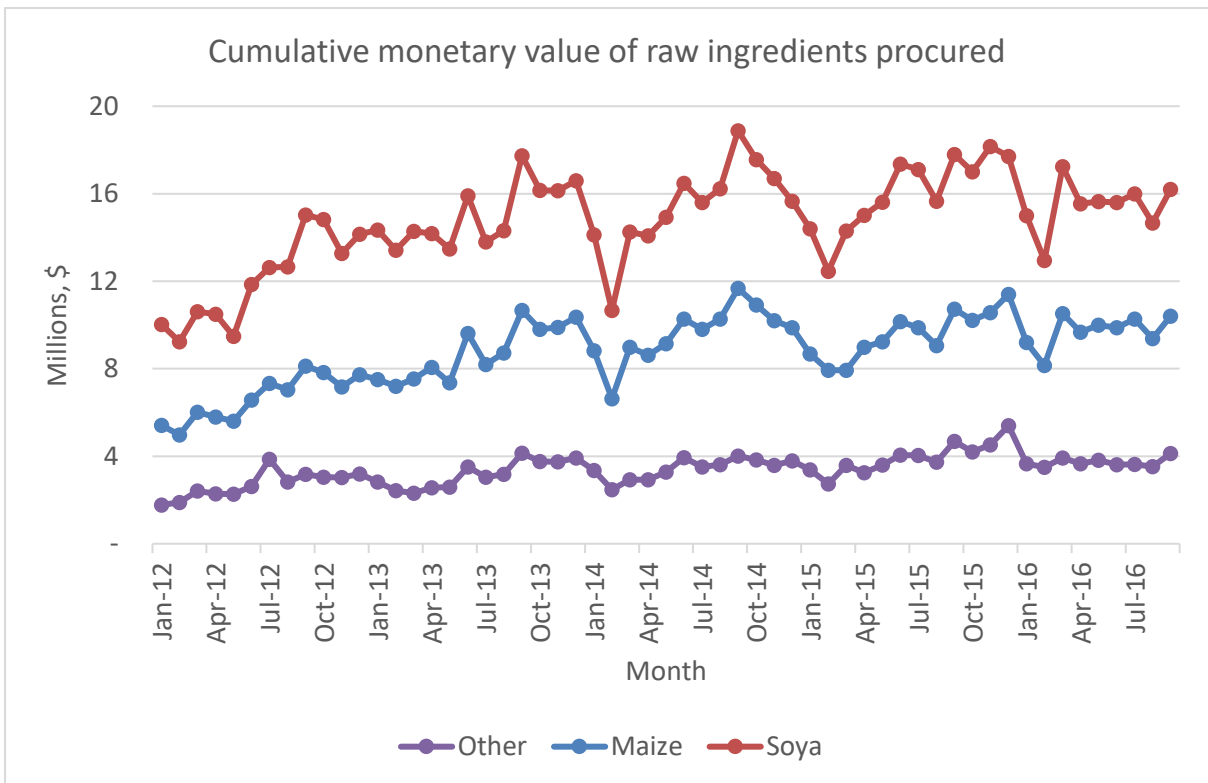
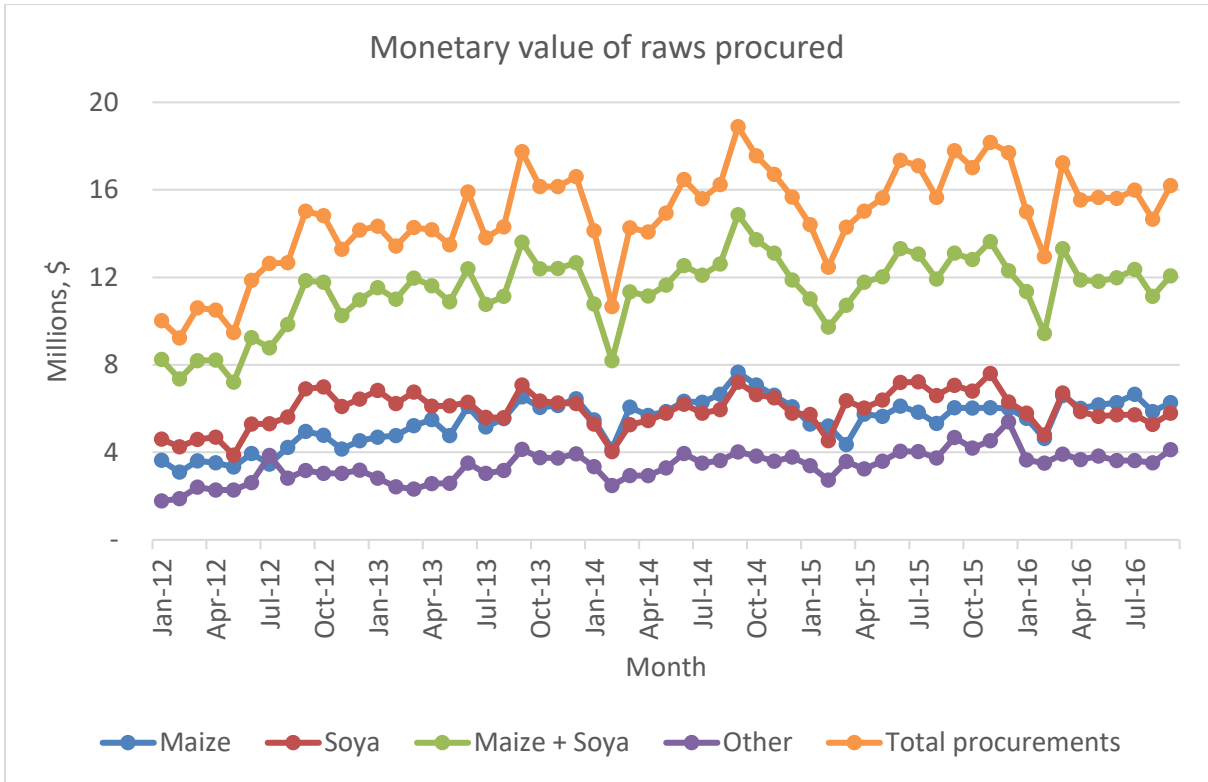
Feed Raw Materials	Monthly Averages											Jul-Sep '16	
	2012	2013	2014	2015	2015				2016			compared to	
					Jan-Mar	Apr-Jun	Jul-Sep	Oct-Dec	Jan-Mar	Apr-Jun	Jul-Sep	Jul-Sep '15	Apr-Jun '16
Maize	14,352	15,934	16,987	17,937	14,436	18,547	18,746	20,019	18,391	19,605	18,827	0%	-4%
Soya beans	1,623	1,118	256	115	161	86	160	53	143	4	-		
Soya meal - FF	245	1,301	1,805	2,154	1,762	2,234	2,284	2,339	1,791	1,624	1,887	-17%	16%
Soya meal - ME	4,265	2,006	2,044	2,010	1,507	2,125	2,288	2,119	1,672	1,758	2,012	-12%	14%
Soya meal - SE	1,558	3,786	4,388	5,603	4,894	5,588	5,884	6,047	5,332	5,631	4,764	-19%	-15%
Total Soya (bean equivalent)	9,305	10,119	10,666	12,492	10,529	12,674	13,402	13,363	11,333	11,513	10,963	-18%	-5%
Wheat Bran	2,924	4,074	4,558	5,651	4,676	5,569	6,236	6,121	4,335	4,191	5,005	-20%	19%
Maize Bran	1,885	2,276	3,219	4,415	3,557	4,147	4,330	5,626	4,114	3,819	3,790	-12%	-1%
Cotton cake < 30% CP	395	366	301	378	269	317	340	585	352	256	378	11%	47%
Cotton meal >30% CP	365	549	294	249	213	193	285	304	265	278	283	-1%	2%
Cotton seed - Whole	112	145	153	305	171	225	375	452	360	1,231	421	12%	-66%
Sunflower cake/meal	214	436	534	461	277	449	504	615	527	528	514	2%	-3%
Molasses	486	927	995	1,474	998	1,228	1,501	2,168	1,272	1,059	1,315	-12%	24%
Urea	51	67	78	105	80	93	112	134	170	82	100	-11%	22%
Salt	139	164	130	192	110	189	225	244	210	201	188	-16%	-6%
Cotton hulls	483	600	501	673	811	642	523	715	342	297	195	-63%	-34%
Hay	37	45	118	184	82	87	289	279	163	150	281	-3%	88%
MCP	241	168	178	165	151	159	173	178	168	180	167	-3%	-7%
Fine Limestone Flour	-	915	677	797	661	817	834	874	859	873	1,040	25%	19%
Coarse Limestone Flour	-	62	186	236	148	228	283	286	257	241	229	-19%	-5%
Methionine	33	32	38	33	32	31	36	31	51	38	39	7%	1%
Lysine	49	20	26	27	21	25	29	34	41	45	45	55%	0%
Meat and Bone Meal	406	616	790	790	778	837	795	752	708	843	807	1%	-4%
Fish Meal	181	89	99	100	70	109	126	93	85	74	66	-48%	-11%
<b>Totals</b>	<b>31,073</b>	<b>35,697</b>	<b>38,352</b>	<b>44,054</b>	<b>35,868</b>	<b>43,924</b>	<b>46,356</b>	<b>50,069</b>	<b>41,610</b>	<b>43,008</b>	<b>42,351</b>	<b>-9%</b>	<b>-2%</b>

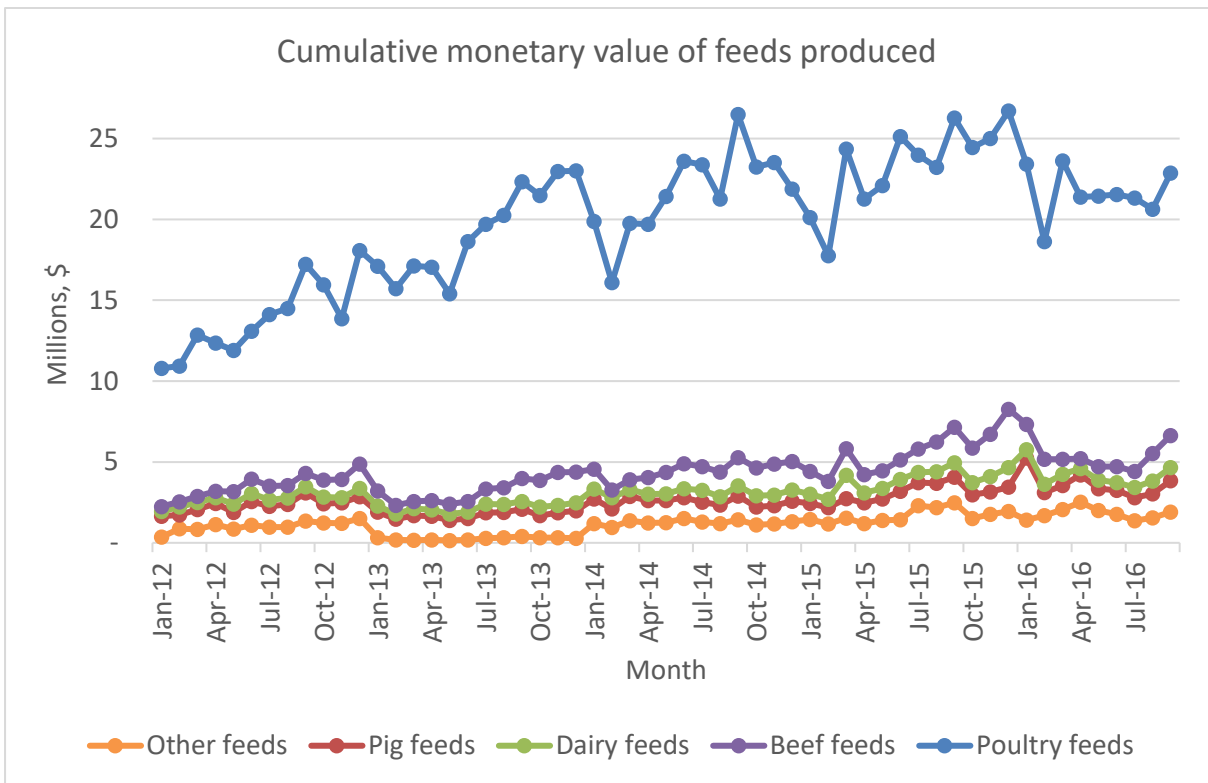
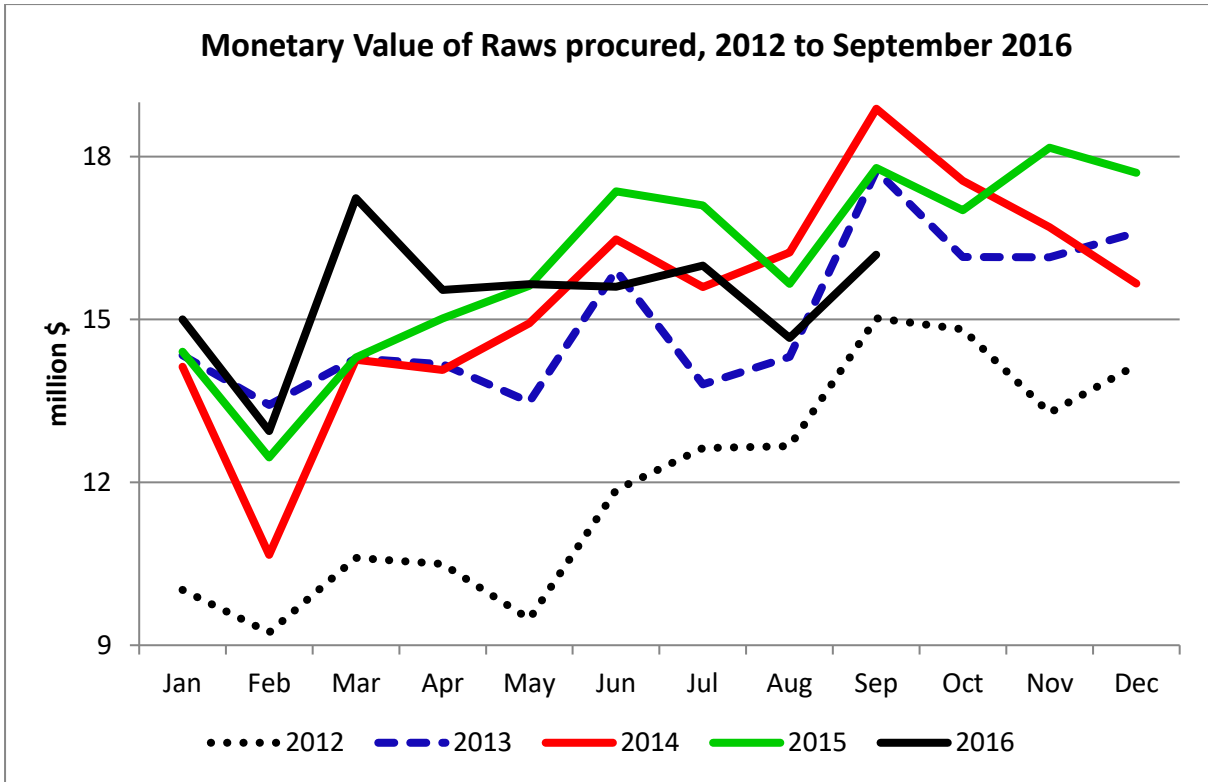
### Tonnes of Feeds Manufactured - January 2012 to September 2016

Production/Sales	Monthly Averages											Jul-Sep '16	
					2015				2016			compared to	
	2012	2013	2014	2015	Jan-Mar	Apr-Jun	Jul-Sep	Oct-Dec	Jan-Mar	Apr-Jun	Jul-Sep	Jul-Sep '15	Apr-Jun '16
<b>Poultry</b>													
Broiler Starter	2,835	3,352	4,147	4,149	3,836	4,006	4,388	4,368	3,274	3,499	3,639	-17%	4%
Broiler Grower	1,621	3,596	4,561	6,053	5,153	6,388	6,473	6,200	6,135	6,605	6,239	-4%	-6%
Broiler Finisher	5,144	7,916	8,742	9,064	7,793	9,468	8,893	10,100	7,234	8,754	8,186	-8%	-6%
Layer Rearing Feed	1,016	873	893	1,381	1,120	1,450	1,432	1,520	1,589	793	1,042	-27%	31%
Layer Production Feeds	4,974	5,436	5,086	5,842	4,955	5,482	6,003	6,930	7,339	6,068	5,773	-4%	-5%
Poultry Breeder feeds	2,878	3,166	3,070	2,650	2,616	2,568	2,776	2,640	2,880	3,622	3,554	28%	-2%
Poultry Concentrates	959	1,046	1,385	1,468	1,356	1,581	1,855	1,081	647	777	973	-48%	25%
<b>Dairy</b>													
Dairy meals	1,393	1,335	1,939	2,182	2,310	1,797	2,013	2,609	1,777	1,463	1,993	-1%	36%
<b>Beef</b>													
Beef Pen Fattening	2,483	3,281	4,470	5,978	4,978	3,940	6,375	8,620	3,521	2,731	5,159	-19%	89%
Beef Maintenance Feeds	632	605	761	1,022	299	566	835	2,386	559	364	910	9%	150%
Beef Concentrates	319	151	77	573	28	1,569	638	55	1,254	2,001	374		
<b>Pig</b>													
Juvenile Feeds	408	389	301	366	290	336	412	424	817	327	346	-16%	6%
Growing and Fattening feeds	1,420	1,363	1,619	1,374	1,160	1,462	1,457	1,417	2,300	1,917	1,917	32%	0%
Pig Breeder Feeds	403	490	552	560	516	548	582	596	573	576	586	1%	2%
Pig Concentrates	239	496	99	464	227	559	564	504	899	489	590	5%	21%
<b>Fish</b>													
Aqua Feeds	1,189	1,100	1,293	1,225	1,382	1,174	1,375	968	1,211	1,277	979	-29%	-23%
<b>Sundry Feeds</b>													
All Other species feeds	514	523	745	883	745	892	981	916	1,043	1,681	1,028	5%	-39%
<b>Totals</b>	28,427	35,119	39,740	45,234	38,765	43,786	47,054	51,333	43,052	42,944	43,288	-8%	1%
<b>Poultry feeds</b>													
Broiler	9,600	14,864	17,450	19,266	16,781	19,862	19,755	20,668	16,643	18,857	18,064	-9%	-4%
Layer	5,990	6,309	5,980	7,223	6,075	6,932	7,435	8,450	8,928	6,860	6,815	-8%	-1%
Breeder	2,878	3,166	3,070	2,650	2,616	2,568	2,776	2,640	2,880	3,622	3,554	28%	-2%
Concentrates	959	1,046	1,385	1,468	1,356	1,581	1,855	1,081	647	777	973	-48%	25%
Poultry - Total	19,427	25,385	27,885	30,608	26,828	30,943	31,821	32,839	29,097	30,116	29,406	-8%	-2%
Broiler day old chicks, millions	4.59	5.35	6.47	6.21	5.84	6.94	6.34	5.73	5.91	5.98	6.75	6%	13%
Sexed pullets, thousands	210	180	171	255	253	297	277	191	145	149	167	-40%	12%

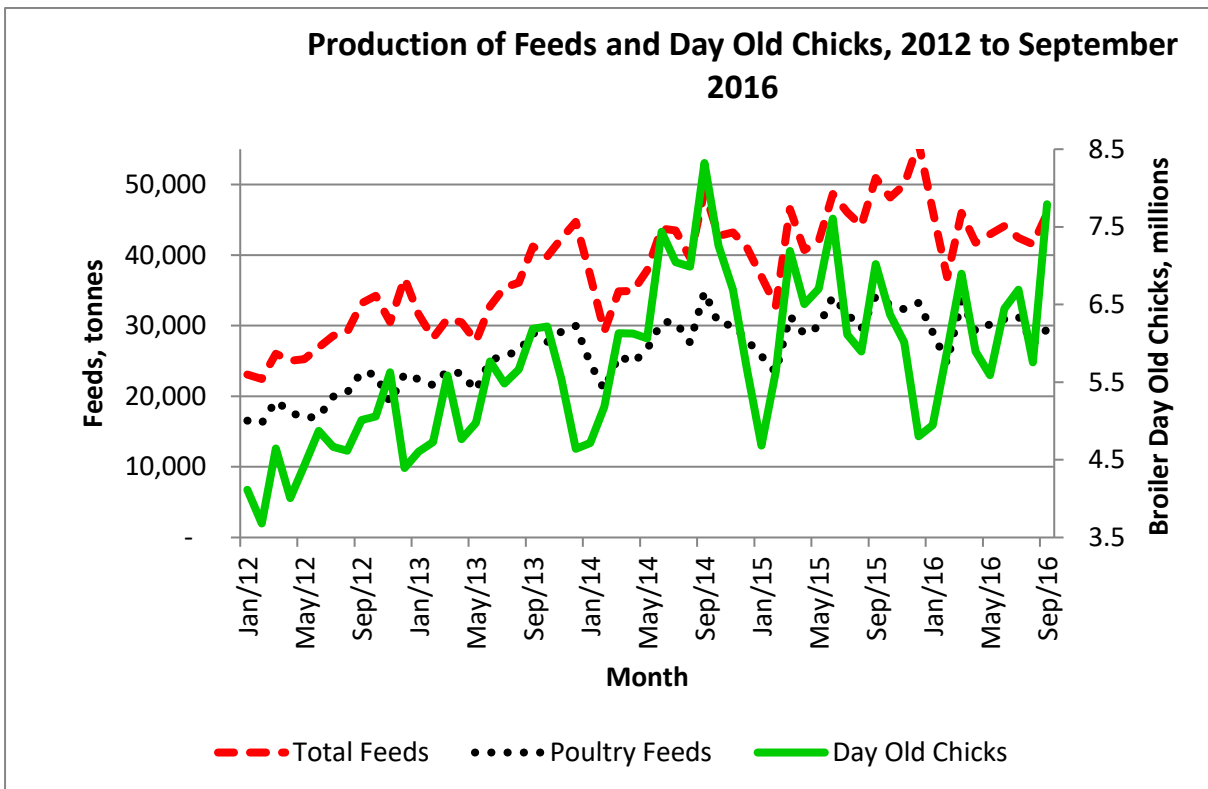
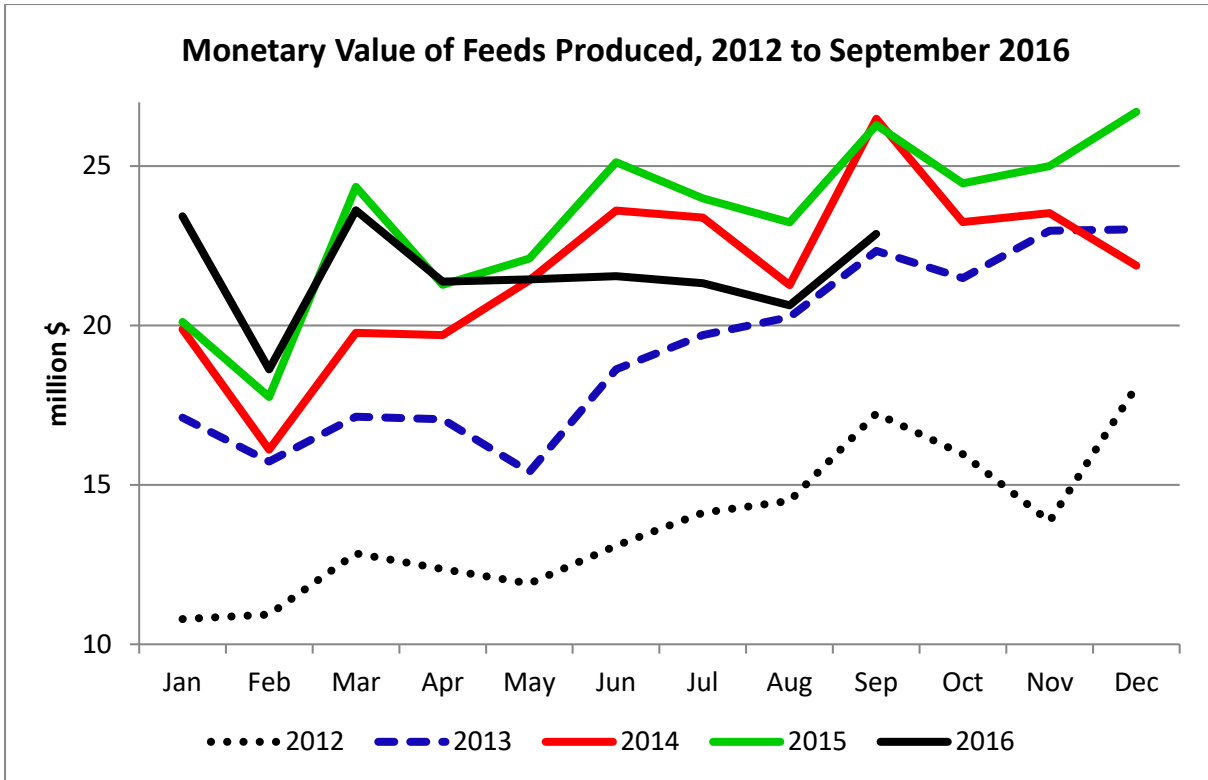
Prices of Raws Procured - January 2012 to September 2016												
	Monthly Averages											Jul-Sep '16
					2015				2016			compared to
<b>Feed Raw Materials</b>	2012	2013	2014	2015	Jan-Mar	Apr-Jun	Jul-Sep	Oct-Dec	Jan-Mar	Apr-Jun	Jul-Sep	Apr-Jun '16
Maize	274	350	364	316	342	315	306	301	304	314	333	6%
Soya beans	585	627	576	587	558	537	592	660	592			
Soya meal - FF	814	788	699	676	702	655	670	677	678	665	658	-1%
Soya meal - ME	726	787	699	656	658	657	651	659	655	640	633	-1%
Soya meal - SE	718	791	697	651	658	650	654	643	634	628	646	3%
Wheat Bran	180	192	183	176	176	163	164	201	184	181	177	-2%
Maize Bran	181	198	181	172	175	155	187	172	183	177	189	7%
Cotton cake < 30% CP	280	224	288	280	273	275	275	298	286	276	287	4%
Cotton meal >30% CP	365	356	349	412	422	411	408	408	402	375	393	5%
Cotton seed - Whole	291	273	310	309	289	303	322	323	296	292	332	14%
Sunflower cake/meal	430	496	497	484	495	501	484	457	486	463	503	9%
Molasses	136	125	128	141	144	144	139	138	138	143	145	1%
Urea	791	762	614	646	667	652	625	639	608	580	570	-2%
Salt	237	232	189	212	223	207	215	204	196	192	207	8%
Cotton hulls	96	117	114	132	114	119	120	176	170	173	183	6%
Hay	129	147	138	157	150	156	163	159	160	159	153	-4%
MCP	949	838	739	752	753	762	758	734	713	736	721	-2%
Fine Limestone Flour		120	108	107	110	106	106	106	106	102	106	4%
Coarse Limestone Flour		151	148	153	163	155	147	146	138	135	136	0%
Methionine	5,299	4,454	4,393	5,065	4,815	4,875	5,346	5,225	5,109	5,163	5,043	-2%
Lysine	3,140	2,722	2,130	2,257	2,165	2,293	2,309	2,261	2,047	1,872	1,991	6%
Meat and Bone Meal	818	862	820	744	773	754	733	717	669	650	669	3%
Fish Meal	1,356	1,570	1,483	1,544	1,513	1,650	1,574	1,441	1,245	1,318	1,330	1%

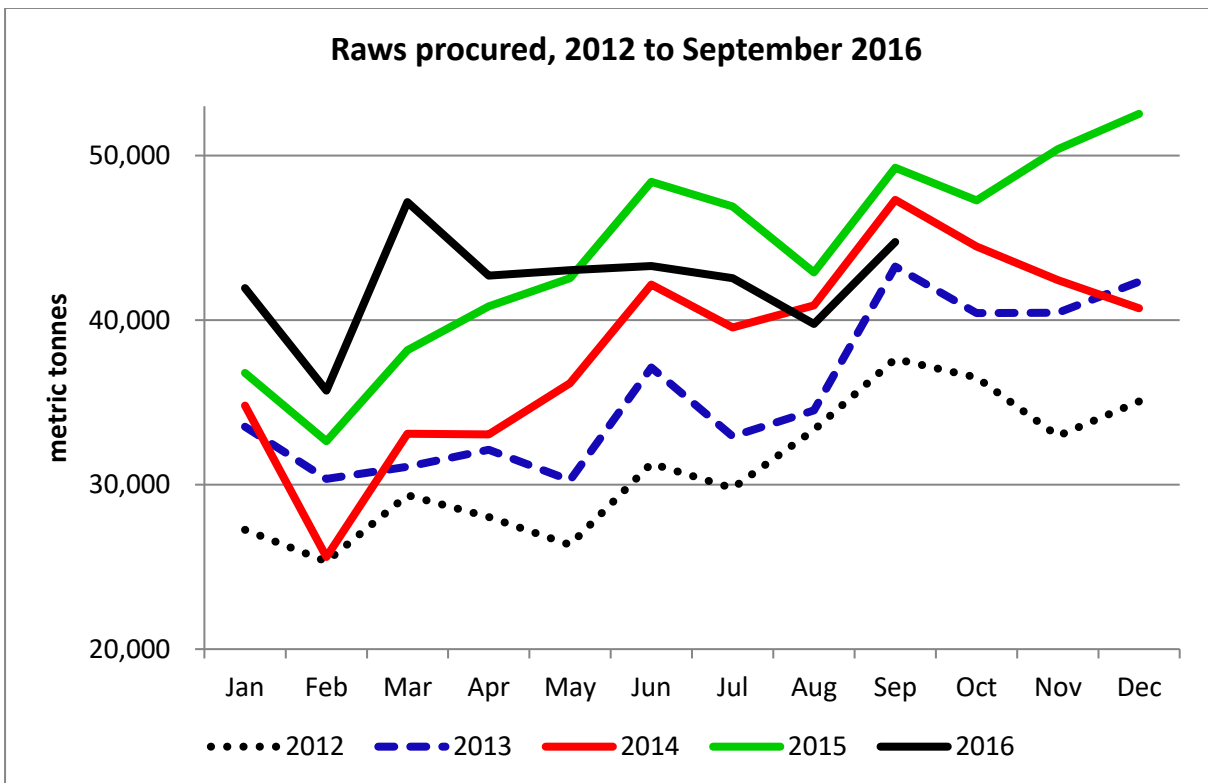
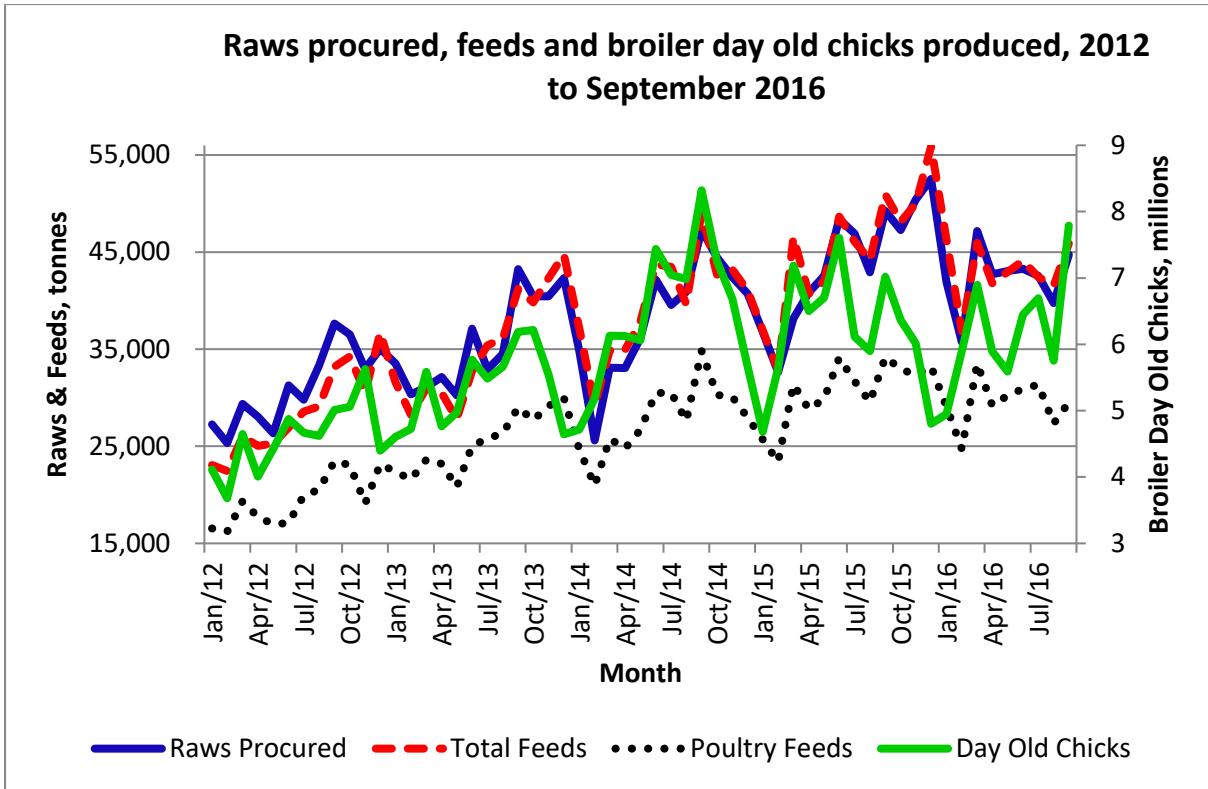
<b>Prices of Feeds Manufactured - January 2012 to September 2016</b>												
	Monthly Averages											Jul-Sep '16
<b>Production/Sales</b>					2015				2016			compared to
<b>Poultry</b>	2012	2013	2014	2015	Jan-Mar	Apr-Jun	Jul-Sep	Oct-Dec	Jan-Mar	Apr-Jun	Jul-Sep	Apr-Jun '16
Broiler Starter	557	678	667	632	657	649	617	605	611	607	607	0%
Broiler Grower	553	670	655	613	639	622	598	594	587	583	574	-2%
Broiler Finisher	530	638	637	603	622	612	593	586	582	578	580	0%
Layer Rearing Feed	478	559	526	501	511	501	498	494	507	489	467	-4%
Layer Production Feeds	480	556	527	498	509	503	489	492	490	480	471	-2%
Poultry Breeder feeds	488	554	507	458	478	468	443	443	445	453	442	-2%
Poultry Concentrates	834	941	855	768	785	740	744	804	771	777	814	5%
<b>Dairy</b>												
Dairy meals	299	329	304	369	367	367	369	372	327	326	373	14%
<b>Beef</b>												
Beef Pen Fattening	209	265	256	255	262	255	252	252	256	258	254	-2%
Beef Maintenance Feeds	276	250	267	257	254	257	260	257	308	293	270	-8%
Beef Concentrates	290	339	219		229				196			
<b>Pig</b>												
Juvenile Feeds	602	638	607	615	634	625	613	588	563	587	615	5%
Growing and Fattening feeds	495	492	491	441	442	445	438	438	417	387	397	3%
Pig Breeder Feeds	437	486	447	426	423	420	436	423	429	425	440	4%
Pig Concentrates	654	680	704	658	662	659	654	659	665	659	657	0%
<b>Blended Prices of Poultry Feeds</b>												
Broiler	542	655	649	613	635	623	600	593	590	585	583	0%
Layer	480	556	527	499	509	502	491	492	493	481	470	-2%

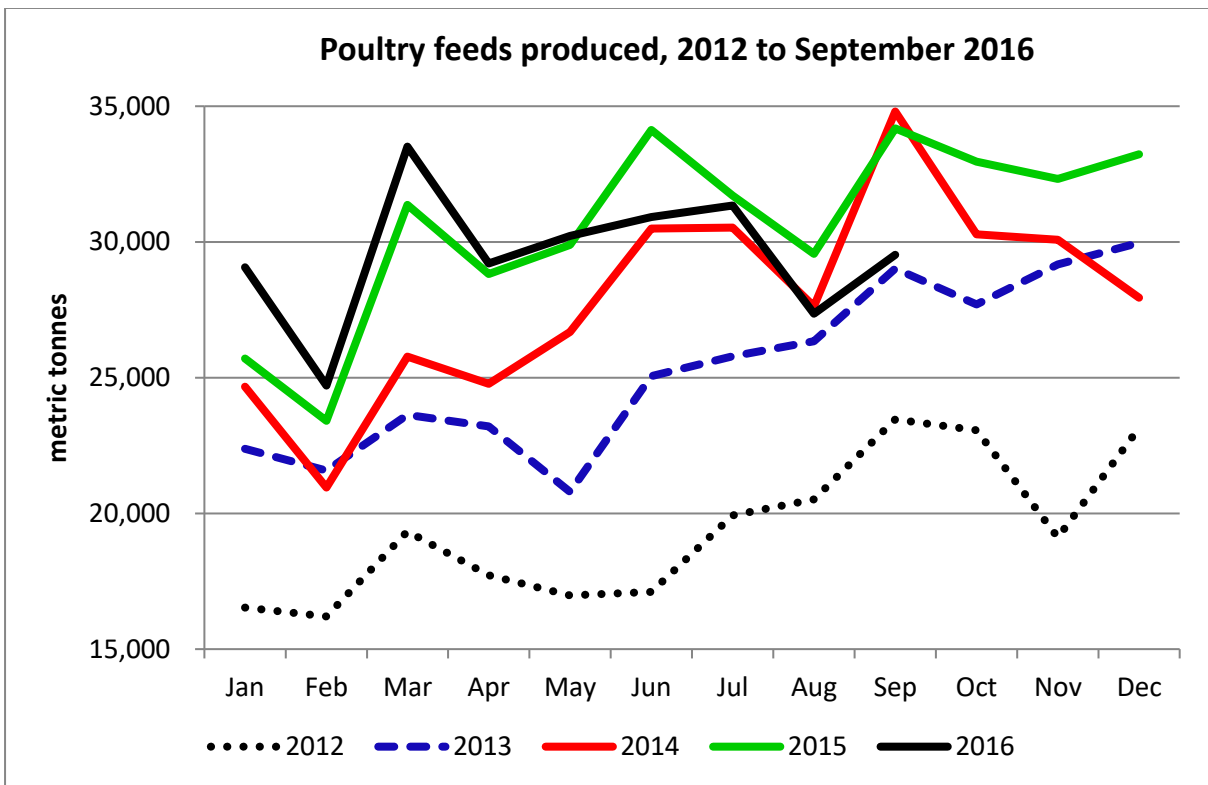
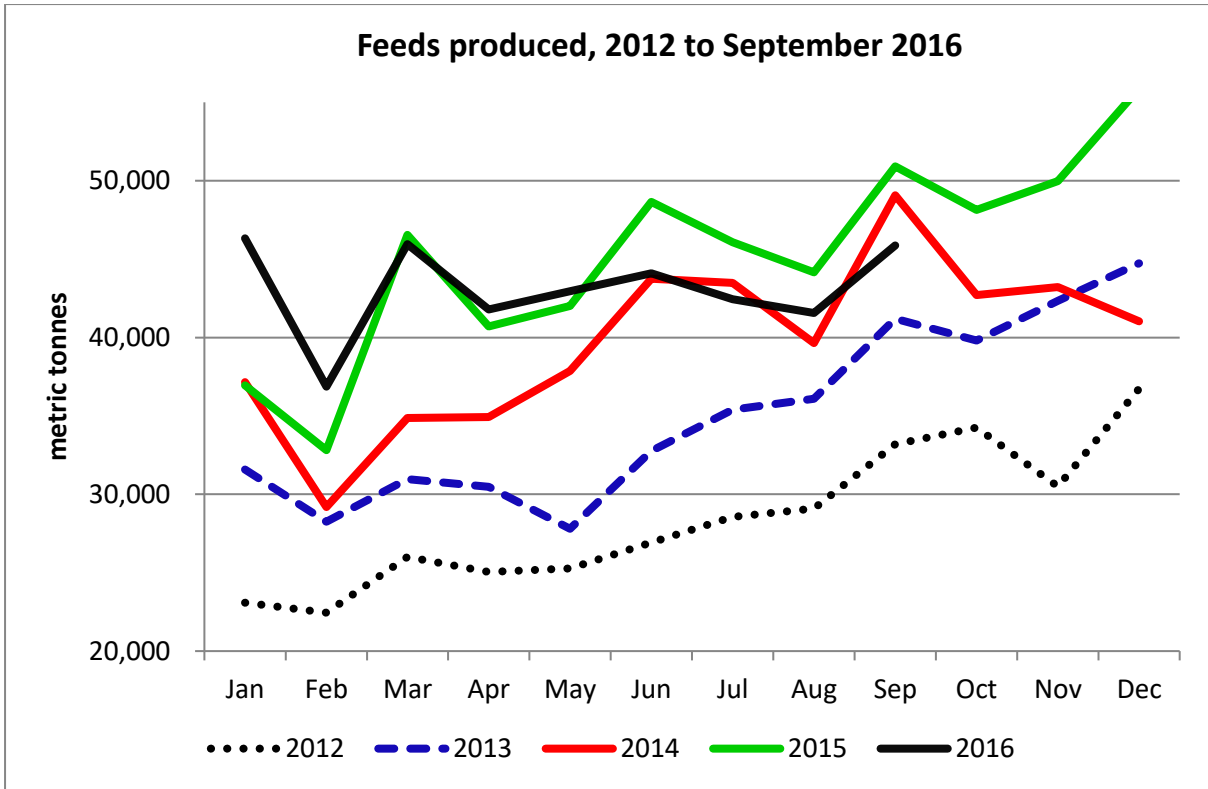


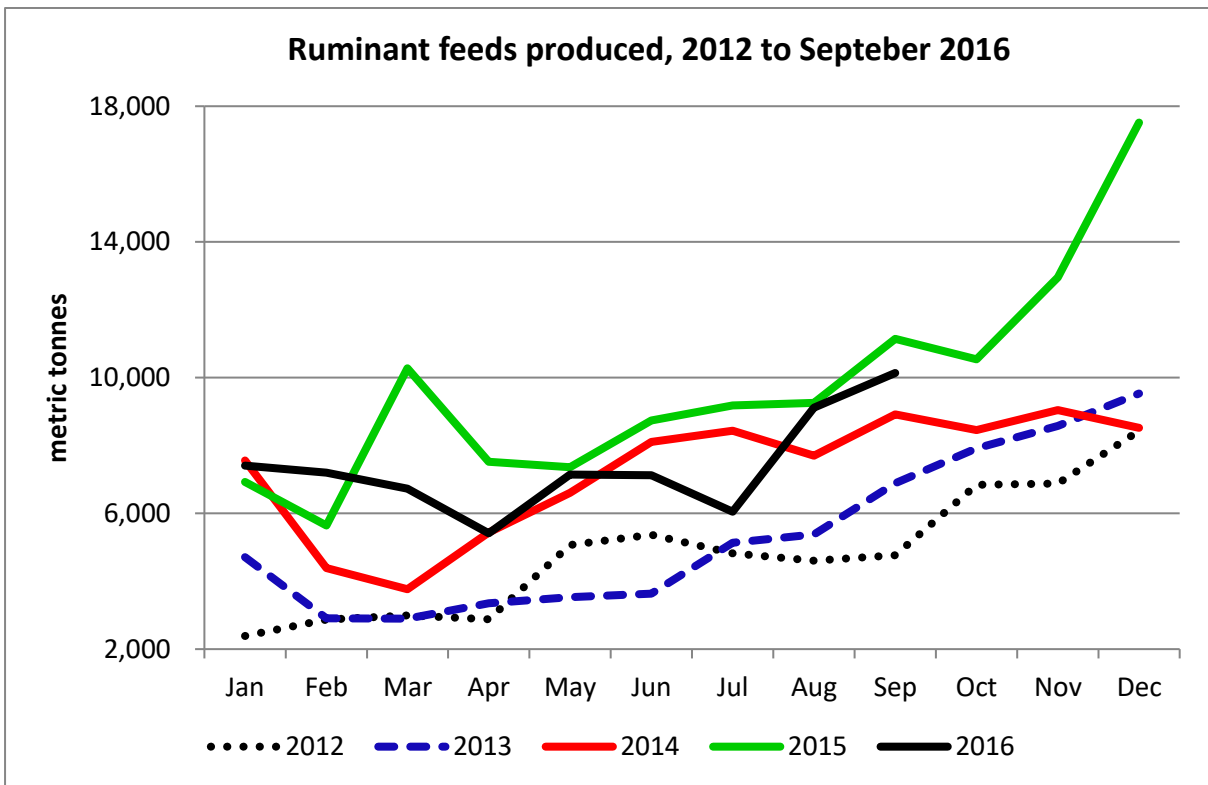
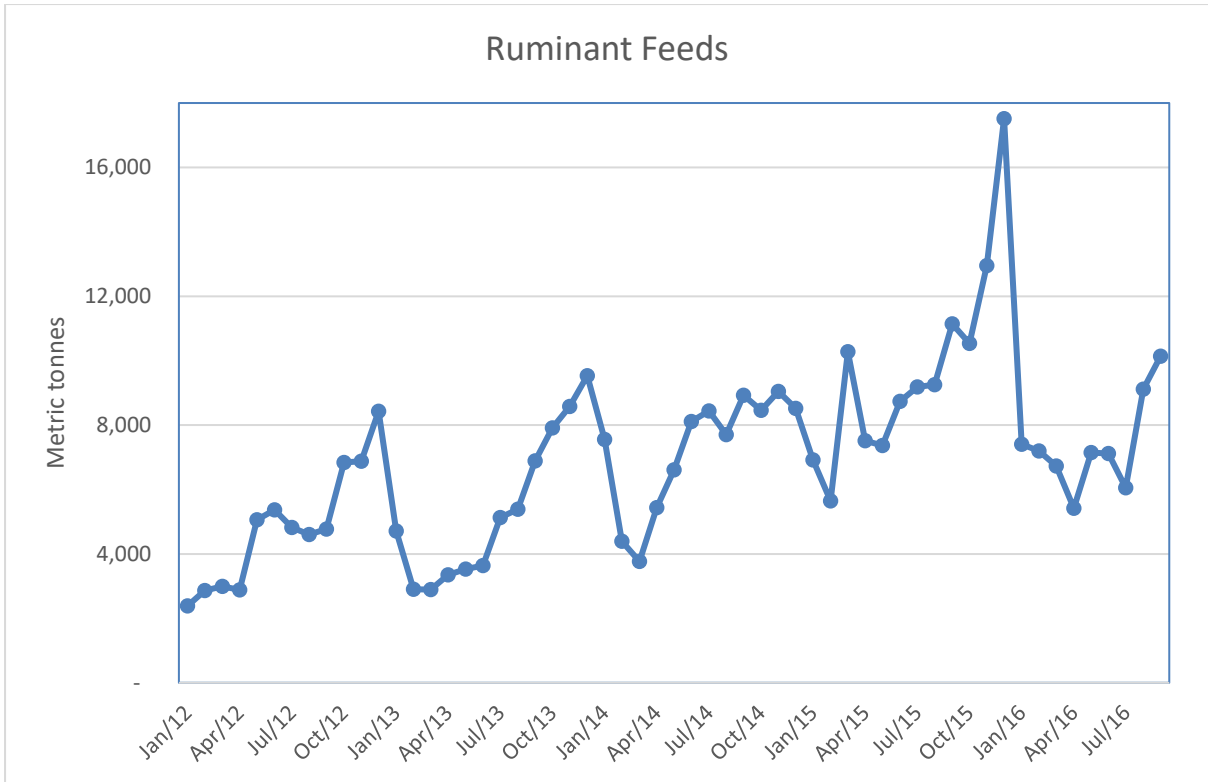


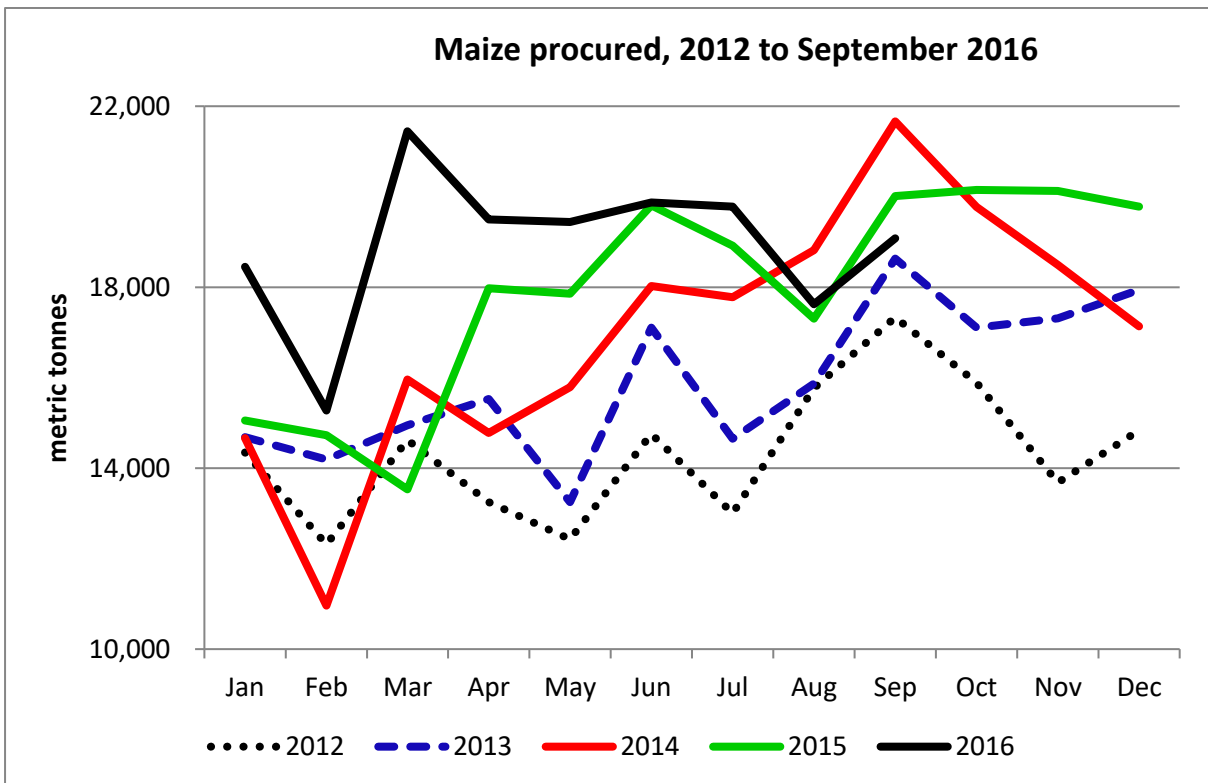
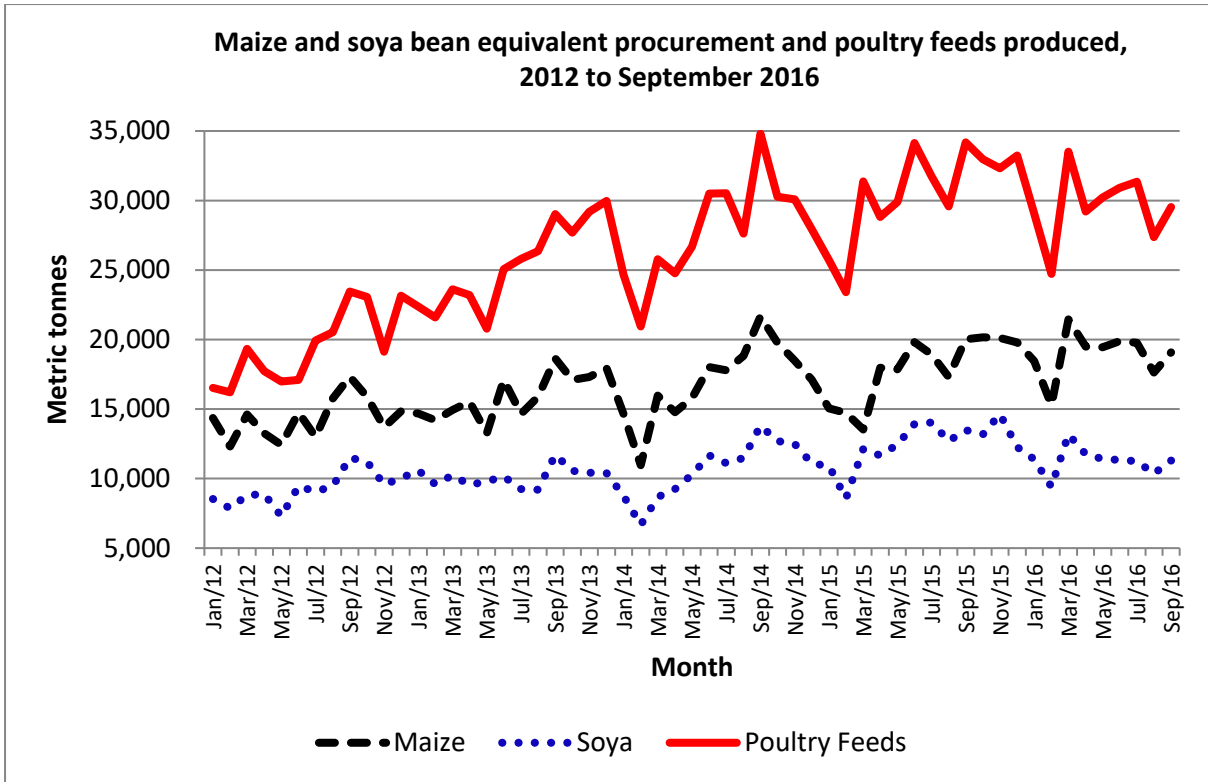


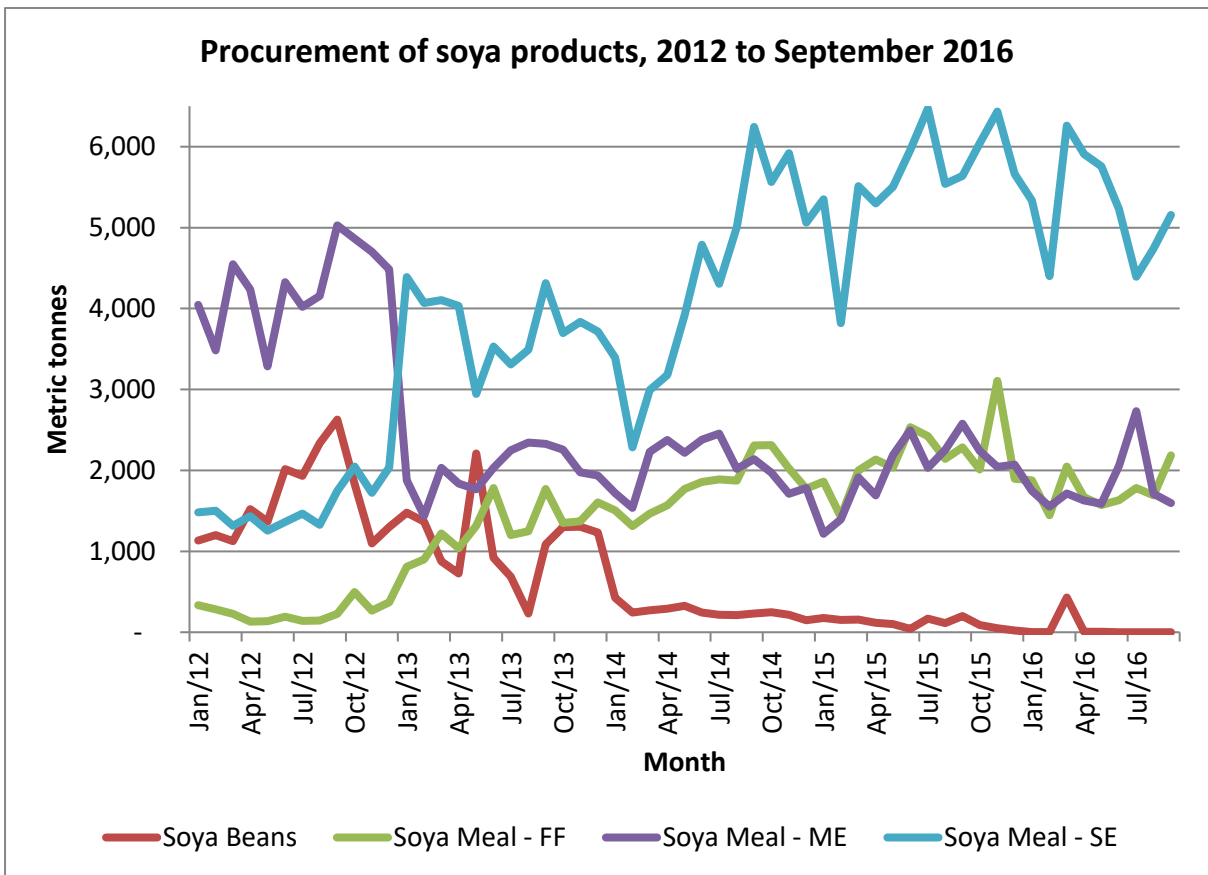
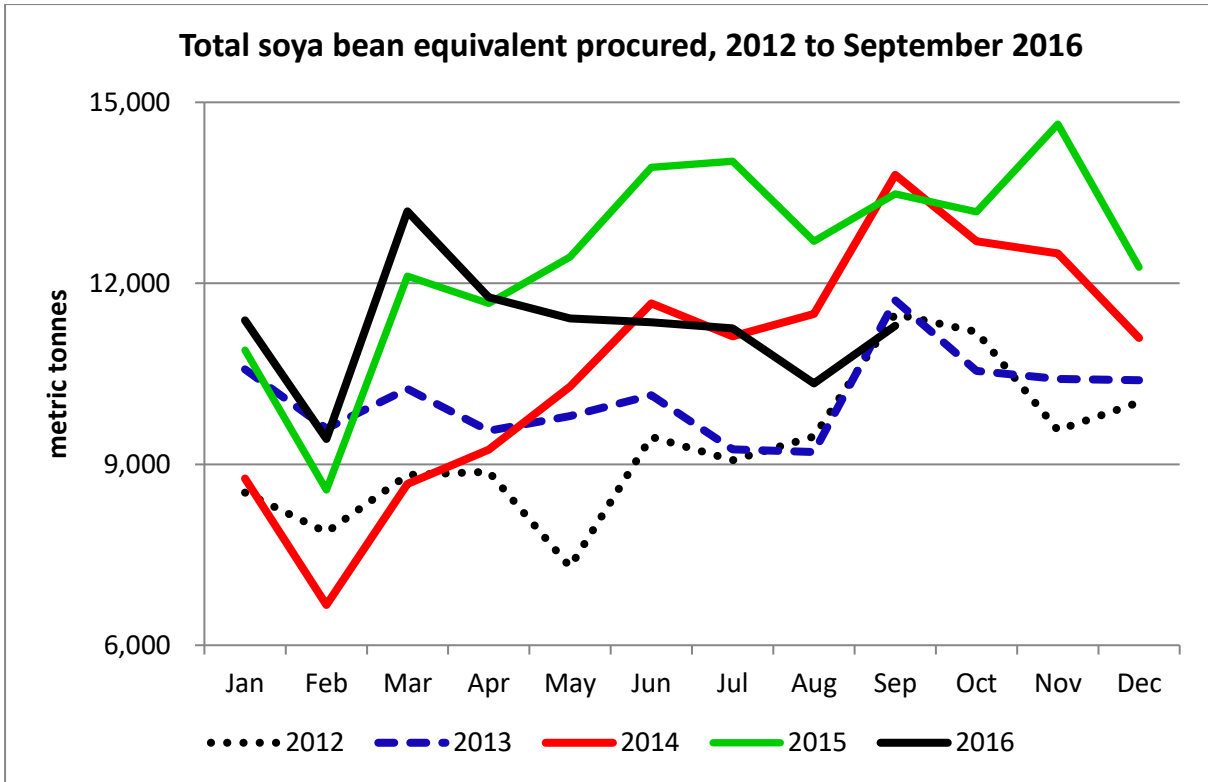




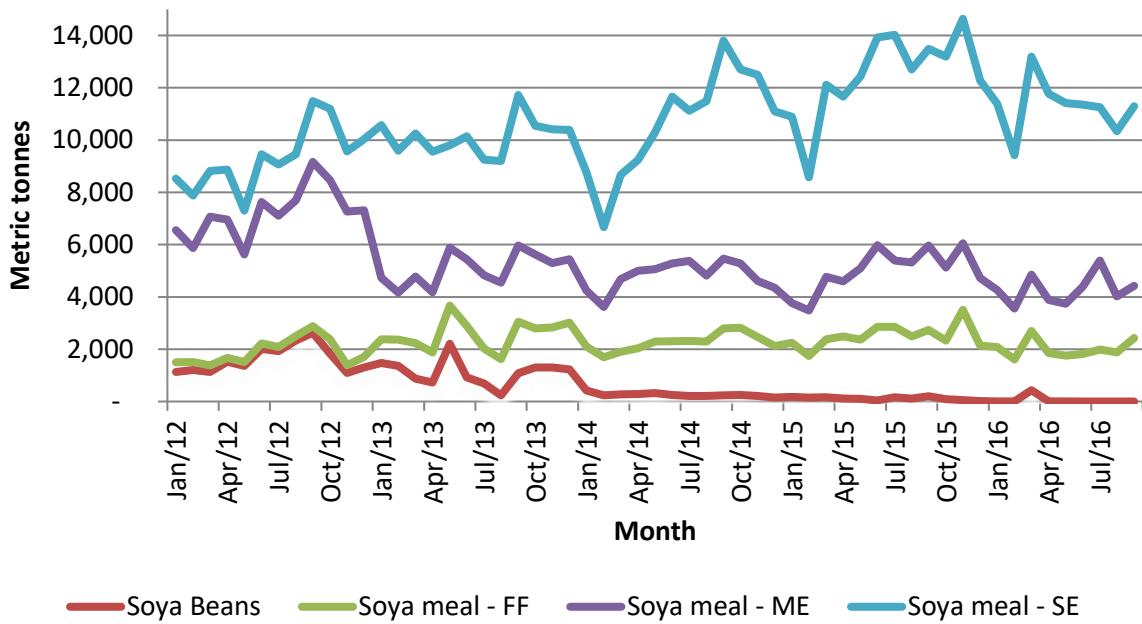








**Cumulative procurement of soya products expressed in bean equivalent, 2012 to September 2016**



**Prices, 2012 to September 2016**

