



ZIMBABWE

SECOND ROUND CROP AND LIVESTOCK ASSESSMENT REPORT 2016/2017 SEASON

MINISTER OF AGRICULTURE MECHANISATION AND IRRIGATION DEVELOPMENT 14 JUNE 2017

Contents

1.	EXECUTIVE SUMMARY CROPS	4
1.1	CROP PRODUCTION.....	4
1.2	PESTS AND DISEASES	5
1.3	FLOODING	6
1.4	FOOD CROP PRODUCTION ESTIMATES (MT)	7
1.5	CEREAL SUFFICIENCY BY DISTRICT.....	10
1.6	CEREAL (MAIZE AND SMALL GRAINS) PRODUCTION VERSUS REQUIREMENT BY PROVINCE	11
2.	CROP PRODUCTION	14
2.1	MAIZE	14
2.2	SORGHUM	23
2.2	PEARL MILLET	27
2.4	FINGER MILLET	31
2.5	SUGARBEANS.....	35
2.6	GROUNDNUTS.....	39
2.7	SWEET POTATO	43
2.7	ROUND NUT	47
2.9	TOBACCO	51
2.10	COTTON.....	55
1.5	SOYABEAN.....	59
2.12	OTHER CROPS.....	63
3	LIVESTOCK PRODUCTION.....	66
3.1	EXECUTIVE SUMMARY LIVESTOCK	66
3.1	LIVESTOCK NUMBERS.....	67
3.3	DRAFT POWER	72
3.2	GRAZING AVAILABILITY	73
3.3	GRAZING QUALITY	74
3.4	WATER AVAILABILITY.....	75
4	LIVESTOCK PRODUCTIVITY	76
4.1	CALVING RATES	76

4.2	CATTLE OFF TAKE	76
4.3	KIDDING RATE.....	76
4.4	LAMBING RATE	76
4.5	BROILER PRODUCTION	76
5	LIVESTOCK SLAUGHTERS AT FORMAL ABATTOIRS	77
5.1	CATTLE SLAUGHTER.....	77
5.2	CATTLE SLAUGHTER GRADES	80
6	MILK PRODUCTION.....	81
7	LIVESTOCK HEALTH	82
7.1	TICK-BORNE DISEASES	83
7.2	FOOT AND MOUTH DISEASE	84
7.3	NEWCASTLE.....	86
7.4	RABIES.....	87
7.5	ANTHRAX	89
7.6	CATTLE LOSSES DUE TO STARVATION	89
7.7	STOCK THEFT.....	90

1. EXECUTIVE SUMMARY CROPS

1.1 CROP PRODUCTION

1.1.1 The 2016/2017 maize production is estimated at **2 155 526Mt** from a total planted area of **1 875 297Ha**.

1.1.2 The estimated production is about **321%** more than the 2015/2016 season.

1.1.3 Average yield estimate is **1.15 t/ha** compared to **0.44t/ha** achieved in 2015/2016 season.

1.1.4 Cereal production (maize and small grains) is **2 443 119Mt** against a cereal requirement of **1 547 376Mt** for human consumption.

1.1.5 Cereal requirements for livestock are estimated at **350 000Mt**.

1.1.6 Tobacco production is estimated at **206 212million kgs** compared to **201 261million kgs** in 2015/2016 season

1.1.7 Cotton production is estimated at **126 995million kgs** compared to **32 885million kgs** in 2015/2016 season

1.1.8 Soya bean production is estimated at **35 744Mt** compared to **47 832Mt** in 2015/2016 season

1.2 PESTS AND DISEASES

1.2.1 Fall armyworm and armoured crickets were the major pests in the 2016/2017 season.

1.2.2 Of the area under maize, **8%** was affected while 2% was damaged by the fall armyworm in the 2016/2017 season.

1.2.3 Crops were affected at early vegetative stage to early reproductive stage across provinces. However after effective spraying of chemicals the maize crop resumed growth.

1.2.4 There was an increase in armoured crickets which in some instances causes total write-off. Incidences were reported in Lower Muzarabani, Rushinga, and Mt. Darwin. Mudzi, and all districts in Matabeleland South districts as well as other provinces.

1.2.5 There are high incidences of cob rots due to the effects of fall armyworm and incessant rains

1.3 FLOODING

1.3.1 Floods were experienced in parts of Matabeleland North and South, Midlands, and Masvingo provinces

1.3.2 Districts affected were Beitbridge, Bulilima, Gwanda , Mberengwa, Tsholotsho

1.3.3 **4%** of the area under cereals was written off due to flooding

1.3.4 162 cattle, 331 goats, 20 donkeys, 1 024 chicken deaths were reported.

1.4 FOOD CROP PRODUCTION ESTIMATES (MT)

TABLE 1: FOOD CROP PRODUCTION ESTIMATES (MT)

Crop	2016/17	2015/16	%
Maize	2 155 526	511 816	321
Sorghum	182 012	36 305	401
Pearl Millet	82 663	22 539	267
Finger Millet	24 107	17 613	37
Irish Potato	476 088	438 354	9
Groundnut	139 503	73 709	89
Round Nut	59 099	13 822	328
Sweet Potato	513 070	203 697	152
Sugar Beans	15 356	12 742	21
Cowpeas	35 895	14 026	156
Cucurbits(Pumpkins, Squash, Marrows, Melons and Butternuts)	69 487	33 700	106
Cabbages and Leaf Vegetables	394 218	360 200	9
Tomato	354 603	341 649	4
Onion	178 290	165 470	8

TABLE 2: CEREAL GRAIN, TUBERS, PULSES AND OTHER CROPS PRODUCTION COMPARED TO NATIONAL REQUIREMENTS (MT)

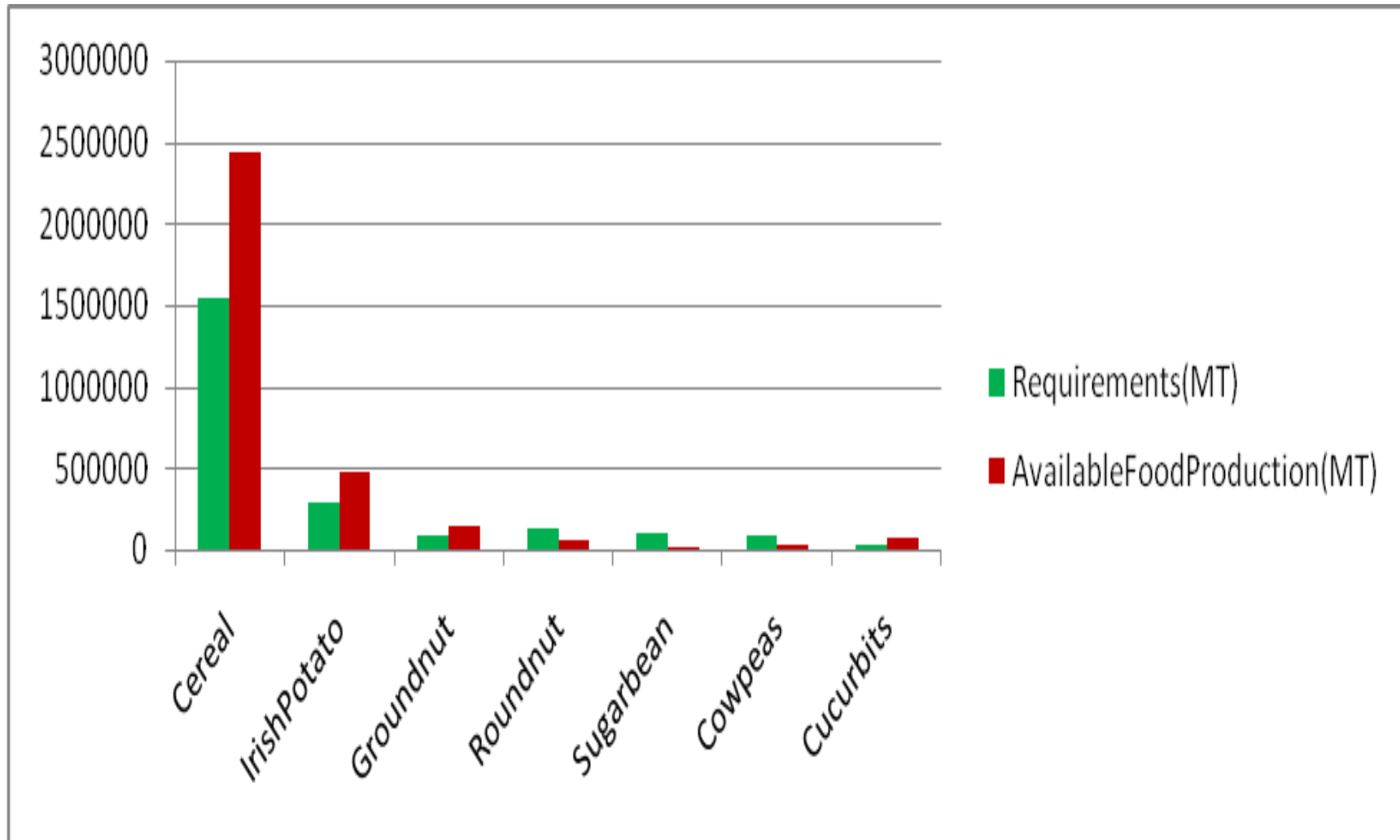
Crop	Requirements (MT)	Available Food Production (MT)	Surplus/Deficits (MT)
¹ Cereal (Maize, sorghum, pearl and finger millet)	1 568 725	2 443 119	874 394
² Irish Potato	285 223	476 088	190 865
² Groundnut	99 828	139 503	39 675
² Roundnut	128 350	59 099	-69 251
² Sugarbean	99 828	15 356	-84 472
² Cowpeas	85 567	35 895	-49 672
² Sweet Potato	299 484	513 070	213 586
² Cucurbits (Pumpkins, Squash and Marrows, Melons and Watermelons)	28 522	69 487	40 965
Total	2 595 527	3 751 617	1 156 090

¹Cereal requirement is computed from a consumption rate of 110kg/year and a national population (2012 Census factoring in growth rate) of **14 261 136** (consumption range being 100-140kg/person/year).

²Other crops requirement is based on 2100Kcal requirement per person per day and calculated from the ZimVac Household Economy Approach Baseline Survey 2009/10 for 25 Livelihood Zones across Zimbabwe. Irish potato 20kg/person/year, Groundnuts 7kg/person/year, Roundnuts 9kg/person/year, Sweet potato 21kg/person/year, Sugarbeans 7kg/person/year, Cowpeas 6kg/person/year, Cucurbits 2kg/person/year

The above requirements are for human consumption. Cereal requirements for livestock are estimated at 350 000Mt.

FIGURE 1: CEREAL GRAIN, TUBERS, PULSES AND OTHER CROPS PRODUCTION COMPARED TO NATIONAL REQUIREMENTS



1.5 CEREAL SUFFICIENCY BY DISTRICT

TABLE 3: CEREAL SUFFICIENCY (MONTHS) FOR DISTRICTS

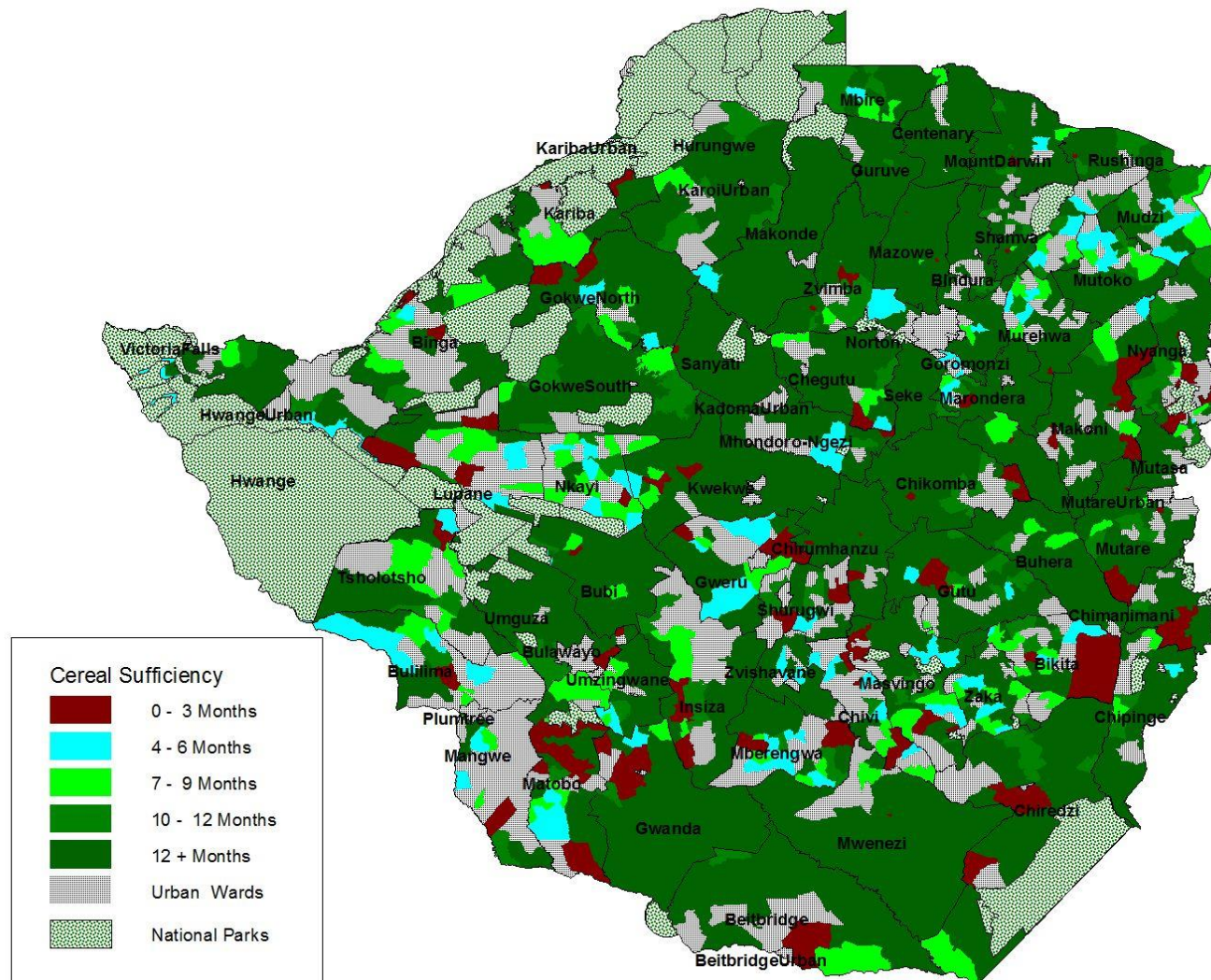
Province	0-3 Months	4-6 Months	7-9 Months	10-12 Months	More than 12 months
Mashonaland West				Mhondoro- Ngezi Kariba	Makonde Zvimba, Chegutu Sanyati, Hurungwe
Mashonaland Central					Rushinga, Mt Darwin Mbire, Muzarabani Shamva, Mazowe Guruve, Bindura
Mashonaland East				UMP, Mudzi	Chikomba, Seke Goromonzi, Hwedza, Marondera, Murehwa, Mutoko
Manicaland					Chipinge, Buhera , Mutare, Nyanga, Chimanimani, Makoni, Mutasa
Midlands		Gweru	Shurugwi Mberengwa		Gokwe North, Gokwe South Kwekwe, Chirumhanzu, Zvishavane
Masvingo		Chivi	Bikita		Chiredzi, Gutu Masvingo, Mwenezi Zaka
Matabeleland North		Hwange	Nkayi	Lupane Tsholotsho	Umguza, Binga Bubi
Matabeleland South			Beit-Bridge	Mangwe Bulilima	Gwanda Umzingwane Matobo

1.6 CEREAL (MAIZE AND SMALL GRAINS) PRODUCTION VERSUS REQUIREMENT BY PROVINCE

TABLE 4: CEREAL (MAIZE AND SMALL GRAINS) SUFFICIENCY FOR PROVINCES

Province	Population	Production(Mt)					(Mt)	
		Maize	Sorghum	Pearl millet	Finger millet	Total Cereal	Requirement	Surplus/deficit
Manicaland	1 874 062	267 369	36 291	19 455	5 550	328 666	206 147	122 519
Mashonaland Central	1 231 796	455 666	31 123	2 021	170	488 980	135 498	353 482
Mashonaland East	1 479 369	274 491	11 581	3 096	3 056	292 224	162 731	129 493
Mashonaland West	1 604 262	543 622	3 705	49	727	548 103	176 469	371 634
Masvingo	1 775 502	150 938	41 213	22 480	10 632	224 074	195 305	28 769
Matabeleland North	770 473	67 759	13 492	19 412	148	100 812	84 752	16 060
Matabeleland South	705 856	74 287	22 607	11 065	339	108 298	77 644	30 654
Midlands	1 722 291	321 394	21 998	5 085	3 485	351 962	189 452	162 510
Harare	2 369 488	0	0	0	0	0	260 644	-260 644
Bulawayo	728 037	0	0	0	0	0	80 083	-80 083
Total	14 261 136	2 155 526	182 010	82 663	24 107	2 443 119	1 568 725	874 394

FIG 2: CEREAL (MAIZE AND SMALL GRAINS) SUFFICIENCY FOR RURAL WARDS



1.7 PRODUCTION ESTIMATES FOR CASH CROPS (MT)

TABLE 5: PRODUCTION ESTIMATES FOR CASH CROPS (MT)

CROP	2016/17	2015/16	%
Tobacco	206 212	201 261	2
Cotton	126 995	32 885	286
Soya bean	35 744	47 832	-25
Banana	252 376	229 286	10
Citrus	198 058	193 760	2
Apples	3 250	4 149	-22
Mango	95 475	99 060	-4
Macadamia	5 721	5 658	1
Tea	7 830	10 166	-23
Coffee	500	455	10
Sugarcane	5 562 674	5 440 560	2

2. CROP PRODUCTION

2.1 MAIZE

TABLE 6: MAIZE PRODUCTION (MT) BY PROVINCE

PROVINCE	2016/17	2015/16	%
Mashonaland West	543 622	143 573	279
Mashonaland Central	455 666	110 316	313
Mashonaland East	274 491	89 338	207
Manicaland	267 369	71 774	273
Midlands	321 394	52 049	517
Masvingo	150 938	11 818	1 177
Matabeleland North	67 759	15 155	347
Matabeleland South	74 287	17 793	318
Total	2 155 526	511 816	321

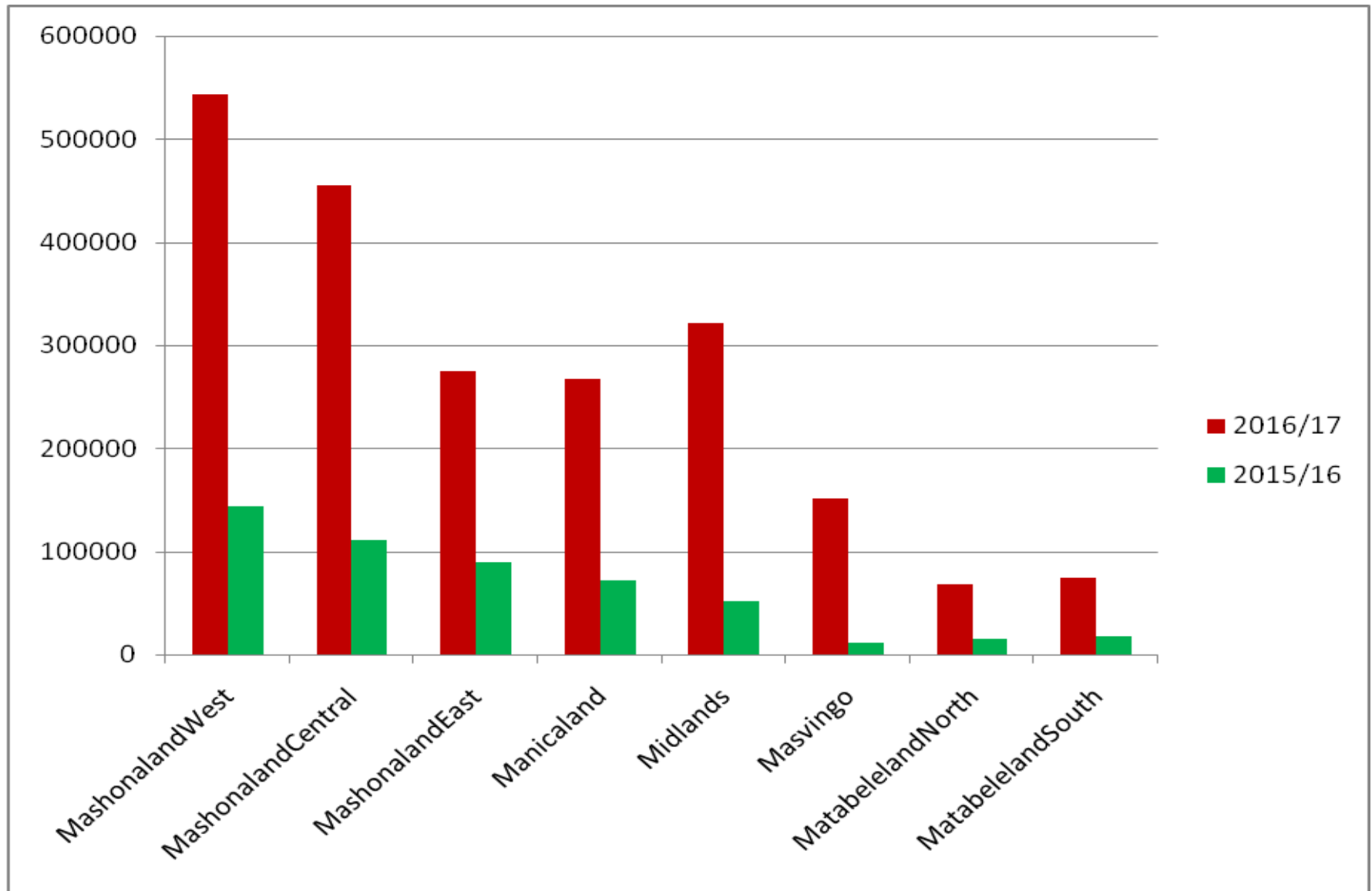
FIGURE 3: MAIZE PRODUCTION (MT) BY PROVINCE

TABLE 7: MAIZE YIELD (MT/HA) BY PROVINCE

PROVINCE	2016/17	2015/16	%
Mashonaland West	1.95	0.71	175
Mashonaland Central	1.98	0.72	175
Mashonaland East	1.26	0.61	107
Manicaland	1.01	0.39	159
Midlands	0.82	0.25	228
Masvingo	0.62	0.10	520
Matabeleland North	0.53	0.20	165
Matabeleland South	0.63	0.26	142
Average	1.15	0.44	161

TABLE 8: MAIZE AREA (HA) BY PROVINCE

PROVINCE	2016/17	2015/16	%
Mashonaland West	279 456	202 898	38
Mashonaland Central	229 917	154 041	49
Mashonaland East	218 559	146 796	49
Manicaland	264 695	188 460	40
Midlands	392 777	209 417	88
Masvingo	245 178	123 320	99
Matabeleland North	127 184	76 276	67
Matabeleland South	117 531	60 789	93
Total	1 875 297	1 161 997	61

TABLE 9: SECTORAL CONTRIBUTION TO MAIZE PRODUCTION (MT)

Sector	Production (Mt)		%	Contribution (%)	
	2016/17	2015/16		2016/17	2015/16
CA	770 862	166 216	364	36	32
OR	147 068	40 359	264	7	8
SSCA	64 538	14 893	333	3	3
A1	521 588	122 358	326	24	24
A2	643 790	162 665	296	30	32
Peri-urban	7 680	5 325	44	0	1
Total	2 155 526	511 816	321	100	100

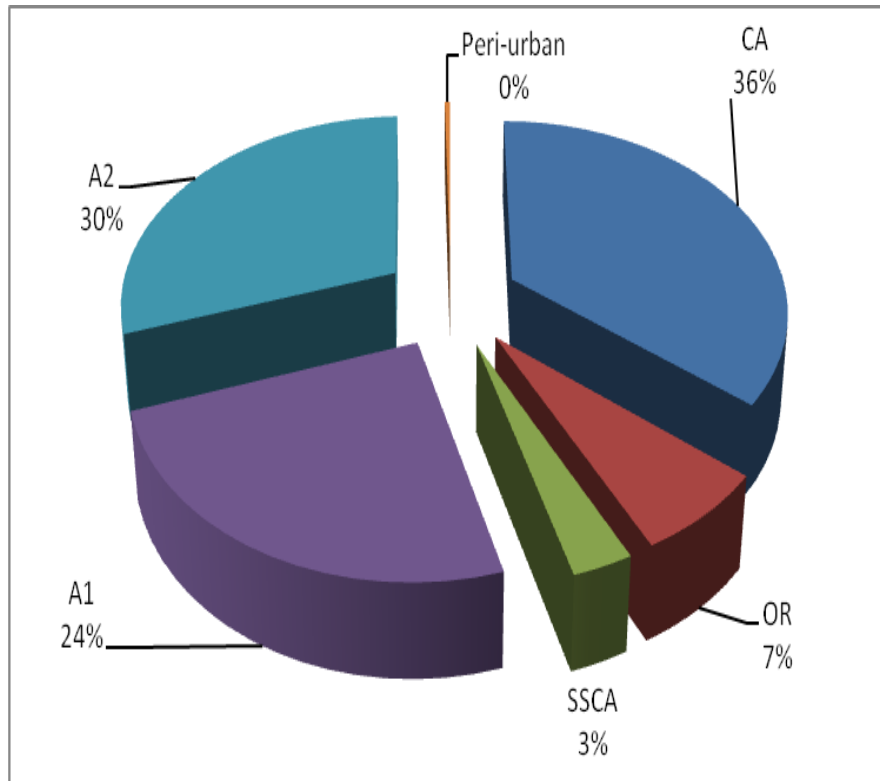
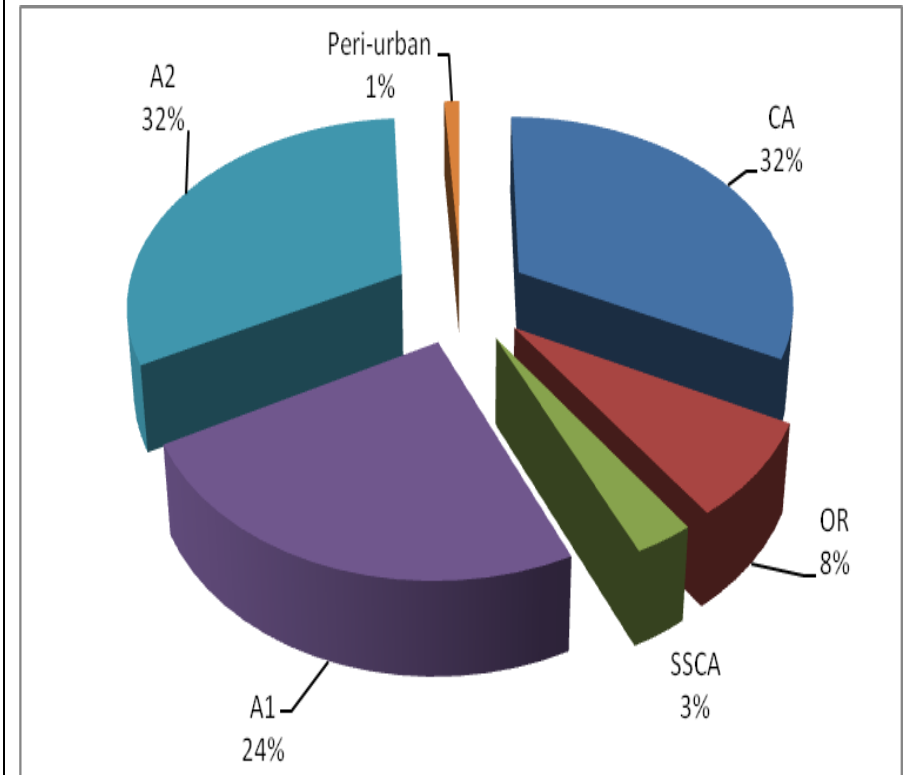
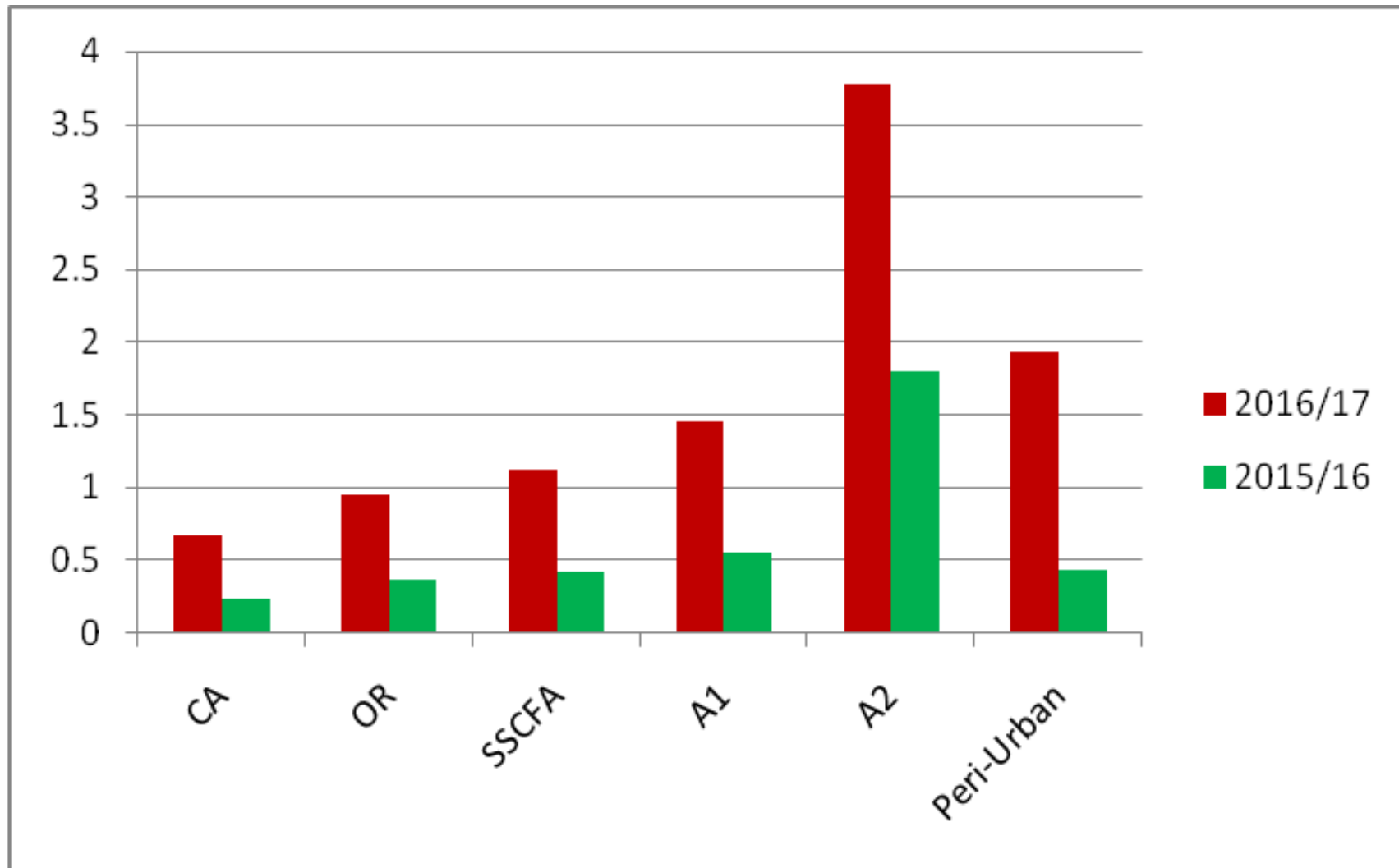
Figure 4a: MAIZE PRODUCTION BY SECTOR 2016/17**Figure 4b: MAIZE PRODUCTION BY SECTOR 2015/16**

TABLE 10: AVERAGE MAIZE YIELDS BY FARMING SECTOR (MT/HA)

Sector	2016/17	2015/16	%
CA	0.68	0.24	183
OR	0.95	0.37	157
SSCFA	1.12	0.42	167
A1	1.46	0.56	161
A2	3.78	1.80	110
Peri-Urban	1.93	0.44	339

FIGURE 5: AVERAGE MAIZE YIELDS BY FARMING SECTOR (MT/HA)

2.2 SORGHUM

TABLE 11: SORGHUM PRODUCTION (MT) BY PROVINCE

PROVINCE	2016/17	2015/16	%
Mashonaland West	3 705	4 280	-13
Mashonaland Central	31 123	3 351	829
Mashonaland East	11 581	1 923	502
Manicaland	36 293	5 684	539
Midlands	21 998	10 220	115
Masvingo	41 213	2 358	1 648
Matabeleland North	13 492	5 385	151
Matabeleland South	22 607	3 104	628
Total	182 012	36 305	401

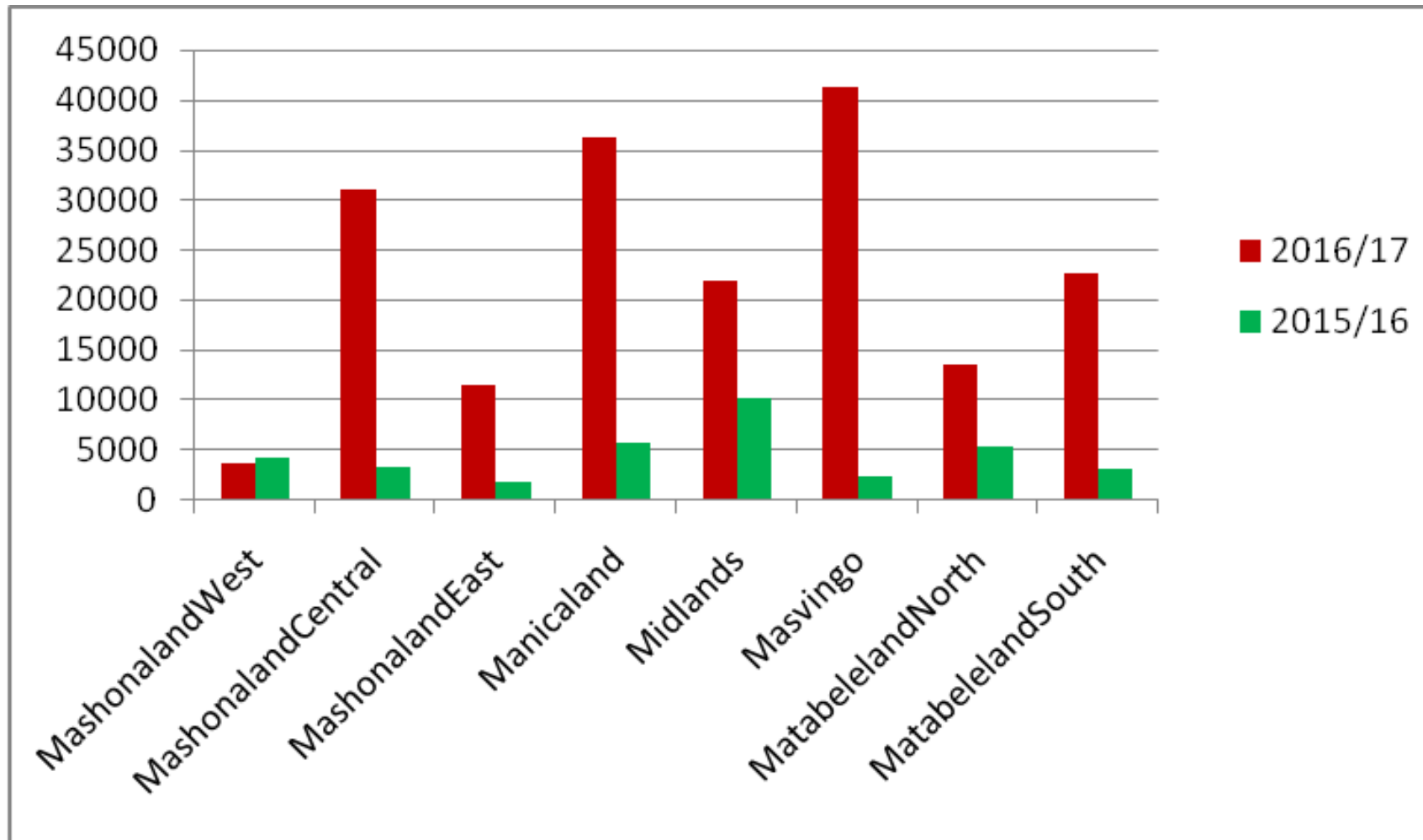
FIGURE 7: SORGHUM PRODUCTION (MT) BY PROVINCE

TABLE 12: SORGHUM YIELD (MT/HA) BY PROVINCE

PROVINCE	2016/17	2015/16	%
Mashonaland West	0.61	0.47	30
Mashonaland Central	0.68	0.15	353
Mashonaland East	0.54	0.20	170
Manicaland	0.68	0.13	423
Midlands	0.59	0.26	127
Masvingo	0.44	0.11	300
Matabeleland North	0.52	0.22	136
Matabeleland South	0.48	0.14	243
Average	0.57	0.19	200

TABLE 13: SORGHUM AREA (HA) BY PROVINCE

PROVINCE	2016/17	2015/16	%
Mashonaland West	5 440	9 101	-40
Mashonaland Central	45 866	21 790	110
Mashonaland East	21 637	9 679	124
Manicaland	59 174	42 196	40
Midlands	45 491	39 053	16
Masvingo	69 407	21 702	220
Matabeleland North	30 703	24 440	26
Matabeleland South	43 772	22 437	95
Total	321 490	190 398	69

2.3 PEARL MILLET

TABLE 14: PEARL MILLET PRODUCTION (MT) BY PROVINCE

	2016/17	2015/16	%
Mashonaland West	49	51	-4
Mashonaland Central	2 021	440	359
Mashonaland East	3 096	494	527
Manicaland	19 455	5 458	256
Midlands	5 085	3 419	49
Masvingo	22 480	2 012	1 017
Matabeleland North	19 412	7 414	162
Matabeleland South	11 065	3 251	240
Total	82 663	22 539	267

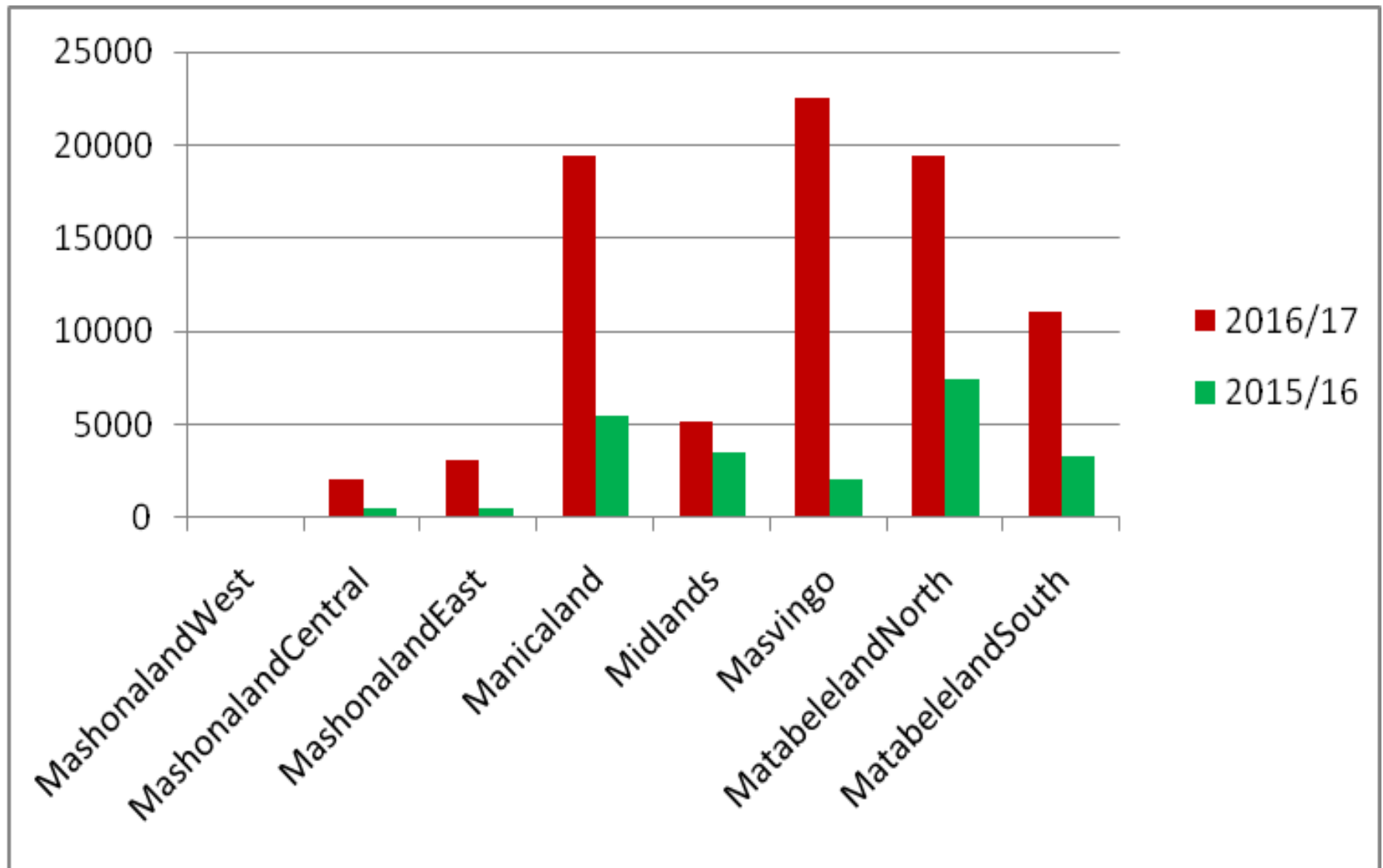
FIGURE 8: PEARL MILLET PRODUCTION BY PROVINCE

TABLE 15: PEARL MILLET YIELD (MT/HA) BY PROVINCE

PROVINCE	2016/17	2015/16	%
Mashonaland West	0.30	0.23	30
Mashonaland Central	0.43	0.17	153
Mashonaland East	0.40	0.17	135
Manicaland	0.50	0.16	213
Midlands	0.38	0.25	52
Masvingo	0.45	0.09	400
Matabeleland North	0.33	0.20	65
Matabeleland South	0.34	0.13	162
Average	0.40	0.16	150

TABLE 16: PEARL MILLET AREA (HA) BY PROVINCE

PROVINCE	2016/17	2015/16	%
Mashonaland West	163	220	-26
Mashonaland Central	4 677	2 526	85
Mashonaland East	7 669	2 948	160
Manicaland	39 210	33 830	16
Midlands	13 378	13 729	-3
Masvingo	49 511	21 834	127
Matabeleland North	59 520	37 530	59
Matabeleland South	32 172	25 089	28
Total	206 300	138 176	49

2.4 FINGER MILLET

TABLE 17: FINGER MILLET PRODUCTION (MT) BY PROVINCE

PROVINCE	2016/17	2015/16	%
Mashonaland West	727	455	60
Mashonaland Central	170	126	35
Mashonaland East	3 056	2 097	46
Manicaland	5 550	4 903	13
Midlands	3 485	3 141	11
Masvingo	10 632	6 545	62
Matabeleland North	148	111	34
Matabeleland South	339	235	44
Total	24 107	17 613	37

FIGURE 9: FINGER MILLET PRODUCTION (MT) BY PROVINCE

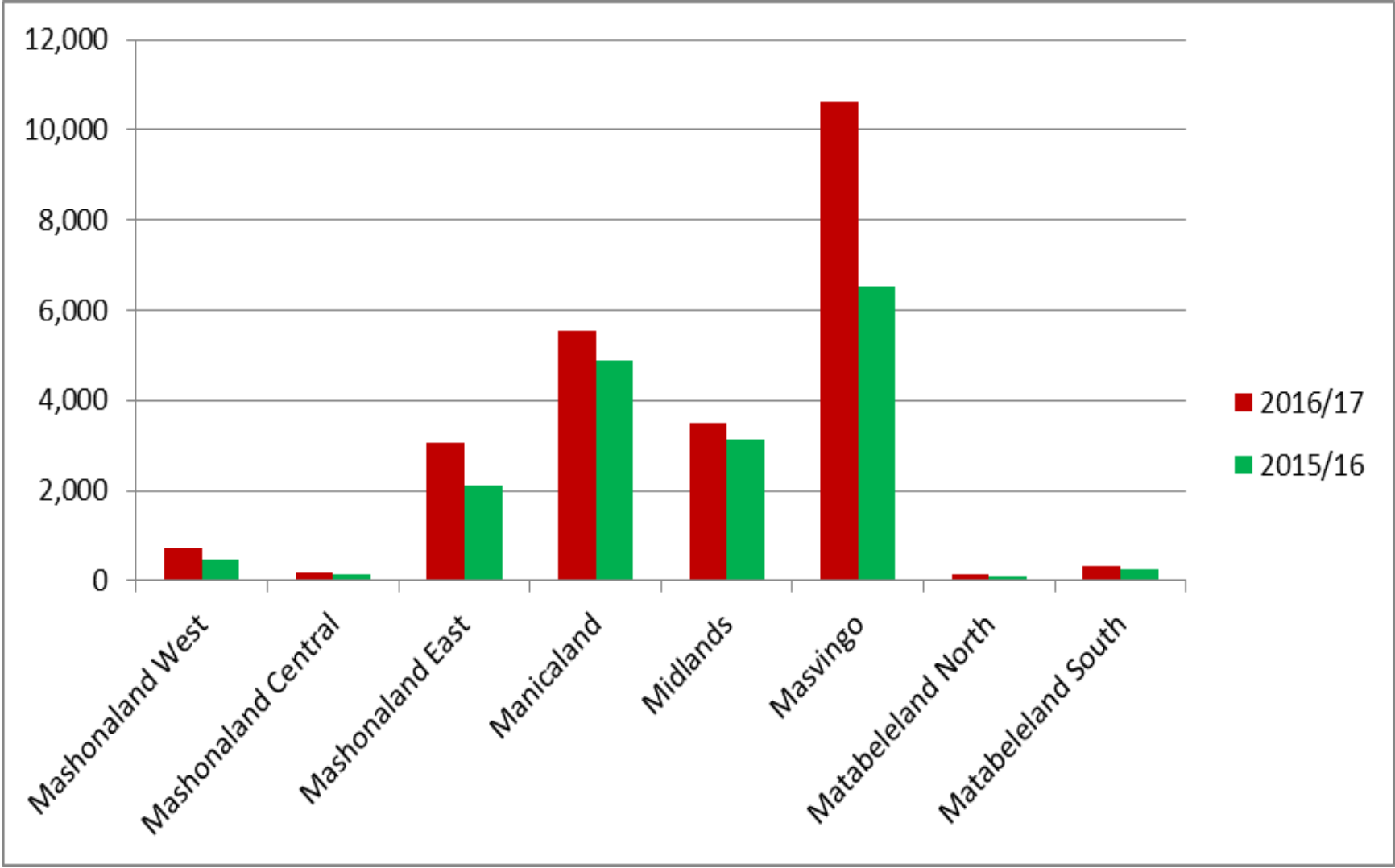


TABLE 18: FINGER MILLET YIELD (MT/HA) BY PROVINCE

PROVINCE	2016/17	2015/16	%
Mashonaland West	0.45	0.36	27
Mashonaland Central	0.39	0.38	3
Mashonaland East	0.45	0.43	7
Manicaland	0.45	0.45	1
Midlands	0.43	0.41	4
Masvingo	0.47	0.34	38
Matabeleland North	0.48	0.40	20
Matabeleland South	0.55	0.47	17
Average	0.46	0.39	17

TABLE 19: FINGER MILLET AREA (HA) BY PROVINCE

PROVINCE	2016/17	2015/16	%
Mashonaland West	1 610	1 281	26
Mashonaland Central	435	332	31
Mashonaland East	6 723	4 919	37
Manicaland	12 243	10 928	12
Midlands	8 133	7 590	7
Masvingo	22 428	19 084	18
Matabeleland North	310	279	11
Matabeleland South	611	496	23
Total	52 493	44 909	17

2.5 SUGARBEANS

TABLE 20: SUGARBEANS PRODUCTION (MT) BY PROVINCE

PROVINCE	2016/17	2015/16	%
Mashonaland West	1 137	1 120	2
Mashonaland Central	3 533	3 220	10
Mashonaland East	2 680	2 113	27
Manicaland	3 076	1 997	54
Midlands	4 334	3 765	15
Masvingo	412	369	12
Matabeleland North	26	23	13
Matabeleland South	158	135	17
Total	15 356	12 742	69

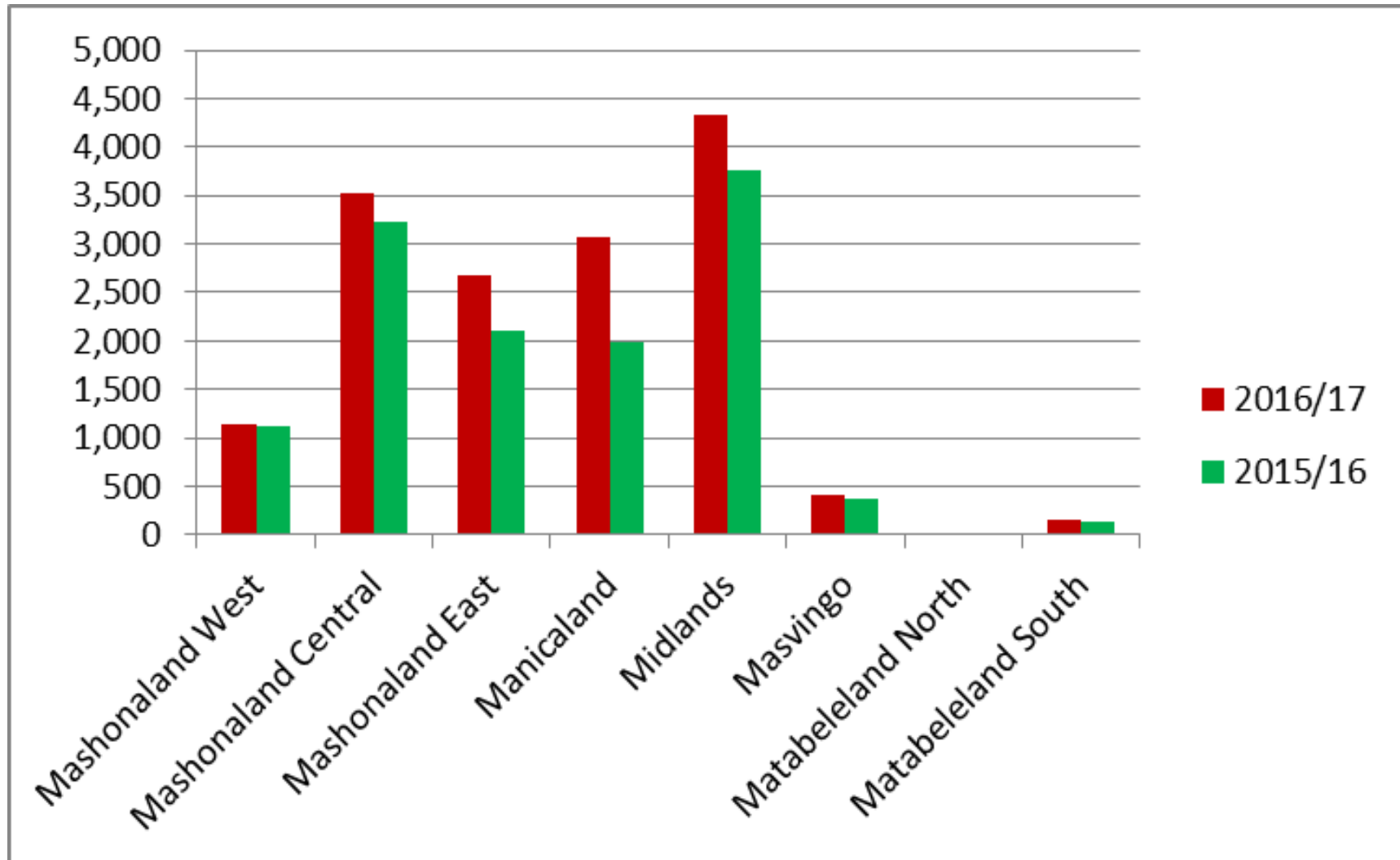
FIGURE 10: SUGARBEANS PRODUCTION (MT) BY PROVINCE

TABLE 21: SUGARBEANS YIELD (MT/HA) BY PROVINCE

PROVINCE	2016/17	2015/16	%
Mashonaland West	1.62	1.57	3
Mashonaland Central	1.26	1.06	19
Mashonaland East	1.54	1.44	7
Manicaland	1.92	1.57	23
Midlands	1.83	1.71	7
Masvingo	2.26	2.10	7
Matabeleland North	6.42	5.13	25
Matabeleland South	2.56	2.33	10
Total	1.68	1.49	12

TABLE 22: SUGARBEANS AREA (HA) BY PROVINCE

PROVINCE	2016/17	2015/16	%
Mashonaland Central	4 462	3 423	30
Mashonaland East	4 115	3 039	35
Manicaland	5 917	3 129	89
Midlands	7 915	6 445	23
Masvingo	930	776	20
Matabeleland North	167	118	42
Matabeleland South	404	315	28
Total	25 751	19 002	36

2.6 GROUNDNUTS

TABLE 23: GROUNDNUTS PRODUCTION (MT) BY PROVINCE

Province	2016/17	2015/16	%
Mashonaland West	7 583	3 630	109
Mashonaland Central	30 424	10 968	177
Mashonaland East	20 948	15 747	33
Manicaland	25 894	13 686	89
Midlands	20 917	12 815	63
Masvingo	23 454	11 468	105
Matabeleland North	2 501	1 983	26
Matabeleland South	7 782	3 412	128
Total	139 503	73 709	89

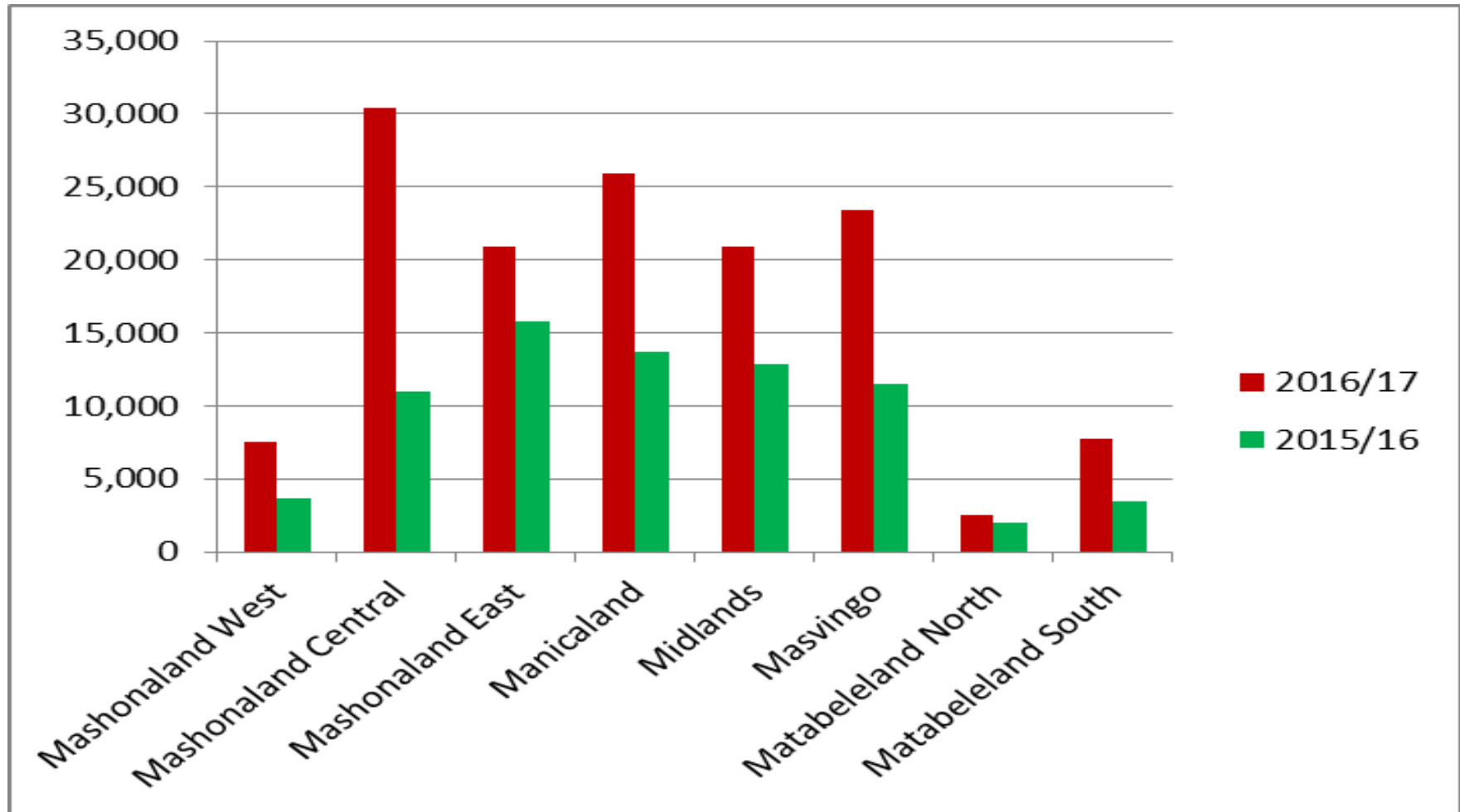
FIGURE 11: GROUNDNUTS PRODUCTION (MT) BY PROVINCE

TABLE 24: GROUNDNUTS YIELD (MT/HA) BY PROVINCE

Province	2016/17	2015/16	%
Mashonaland West	0.60	0.20	198
Mashonaland Central	0.70	0.31	125
Mashonaland East	0.62	0.57	8
Manicaland	0.63	0.45	39
Midlands	0.46	0.34	34
Masvingo	0.50	0.44	13
Matabeleland North	0.42	0.41	2
Matabeleland South	0.67	0.55	22
Total	0.58	0.40	46

TABLE 25: GROUNDNUTS AREA (HA) BY PROVINCE

PROVINCE	2016/17	2015/16	%
Mashonaland West	12 607	17 984	-18
Mashonaland Central	43 473	35 250	24
Mashonaland East	34 026	27 716	24
Manicaland	41 248	30 368	37
Midlands	45 814	37 596	22
Masvingo	47 030	25 938	81
Matabeleland North	5 910	4785	24
Matabeleland South	11 579	6213	88
Total	241 687	185 850	32

2.7 SWEET POTATO

TABLE 26: SWEET POTATO PRODUCTION (MT) BY PROVINCE

PROVINCE	2016/17	2015/16	%
Mashonaland West	142885	23 745	502
Mashonaland Central	80 772	23 115	249
Mashonaland East	41 033	45 191	-9
Manicaland	60 021	39 328	53
Midlands	103 492	45 654	127
Masvingo	62 868	22 259	182
Matabeleland North	1 268	981	29
Matabeleland South	20 731	3 424	505
Total	513 070	203 697	152

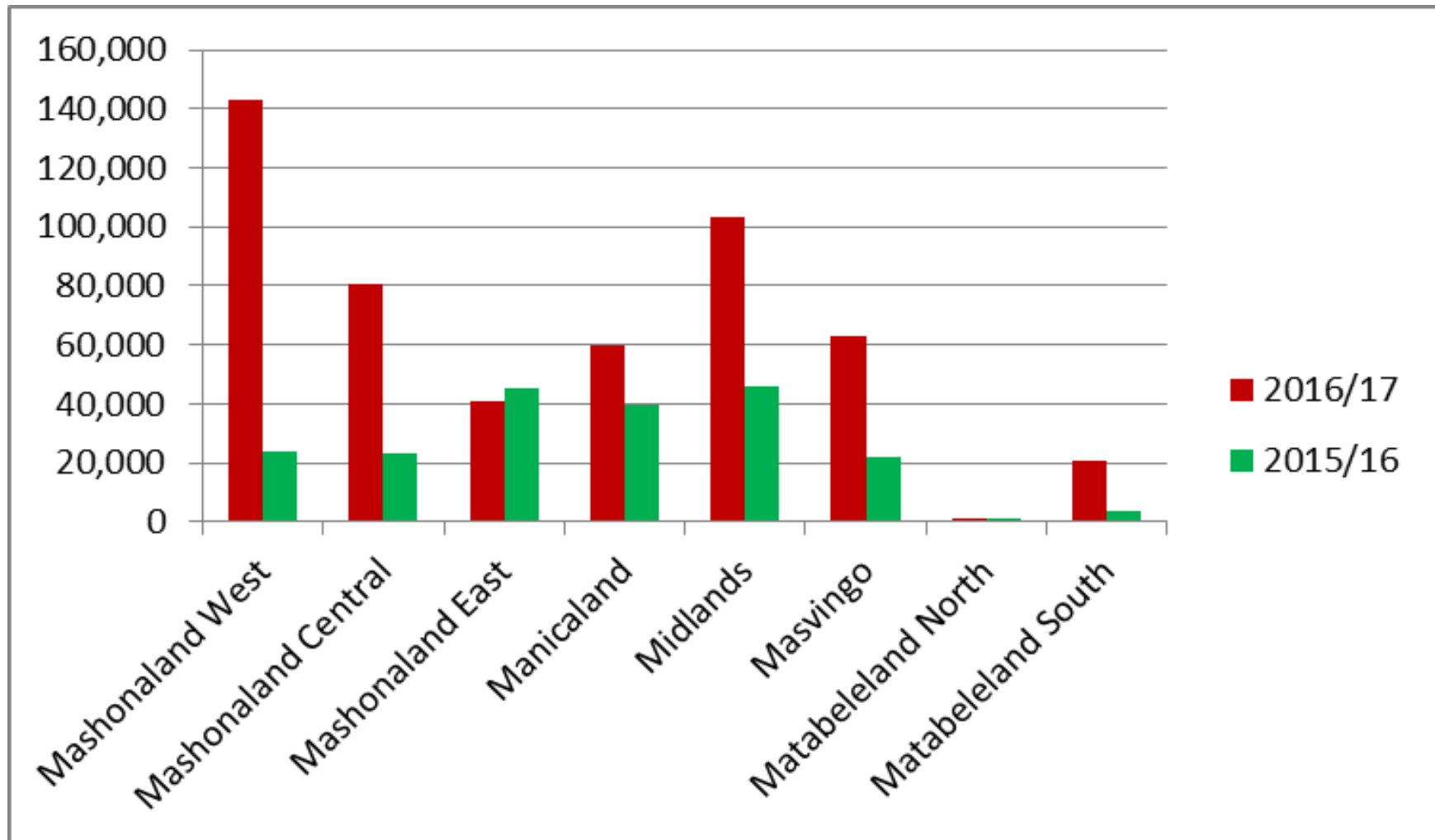
FIGURE 12: SWEET POTATO PRODUCTION (MT) BY PROVINCE

TABLE 27: SWEET POTATO YIELD (MT/HA) BY PROVINCE

PROVINCE	2016/17	2015/16	%
Mashonaland West	12.39	8.82	40
Mashonaland Central	19.57	8.77	123
Mashonaland East	7.55	9.38	-20
Manicaland	10.46	10.65	-2
Midlands	7.32	6.46	13
Masvingo	8.28	8.84	-6
Matabeleland North	7.16	9.34	-23
Matabeleland South	13.67	7.85	74
Total	10.21	8.50	20

TABLE 28: SWEET POTATO AREA (HA) BY PROVINCE

PROVINCE	2016/17	2015/16	%
Mashonaland West	11 531	2 691	329
Mashonaland Central	4 128	2 636	57
Mashonaland East	5 435	4 817	13
Manicaland	5 739	3 693	55
Midlands	14 142	7 069	100
Masvingo	7 594	2 518	202
Matabeleland North	177	105	69
Matabeleland South	1 516	436	248
Total	50 262	23 965	110

2.8 ROUND NUT

TABLE 29: ROUND NUT PRODUCTION (MT) BY PROVINCE

Province	2016/17	2015/16	%
Mashonaland West	1 210	738	64
Mashonaland Central	2 657	335	693
Mashonaland East	4 931	1 843	168
Manicaland	14 726	3 774	290
Midlands	10 261	2 214	363
Masvingo	21 283	3 598	492
Matabeleland North	1 433	618	132
Matabeleland South	2 598	702	270
Total	59 099	13 822	328

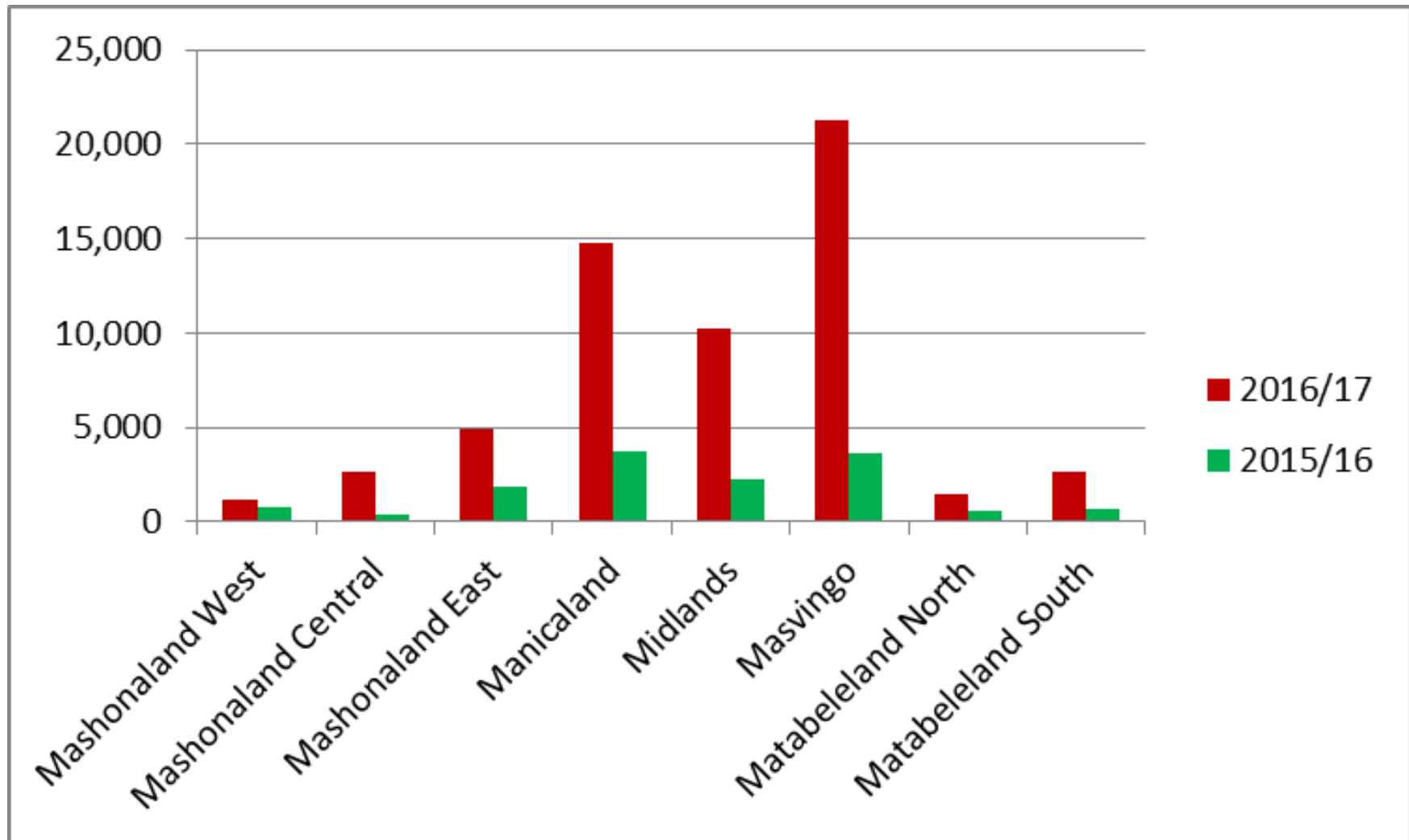
FIGURE 11: ROUND NUT PRODUCTION (MT) BY PROVINCE

TABLE 30: ROUND NUT YIELD (MT/HA) BY PROVINCE

Province	2016/17	2015/16	%
Mashonaland West	0.42	0.28	50
Mashonaland Central	0.46	0.29	59
Mashonaland East	0.47	0.29	62
Manicaland	0.51	0.19	168
Midlands	0.45	0.18	150
Masvingo	0.46	0.24	92
Matabeleland North	0.34	0.23	48
Matabeleland South	0.45	0.24	88
Total	0.46	0.22	109

TABLE 31: ROUNDNUT AREA (HA) BY PROVINCE

Province	2016/17	2015/16	%
Mashonaland West	2 884	2 652	9
Mashonaland Central	5 737	1 155	397
Mashonaland East	10 497	6 362	65
Manicaland	29 089	19 433	50
Midlands	22 709	11 973	90
Masvingo	45 943	15 272	201
Matabeleland North	4 247	2 677	59
Matabeleland South	6 041	2 949	105
Total	127 147	62 473	104

2.9 TOBACCO

TABLE 32: TOBACCO PRODUCTION (MT) BY PROVINCE

PROVINCE	2016/17	2015/16	%
Mashonaland West	78 240	69 871	12
Mashonaland Central	59 405	66 107	-10
Mashonaland East	31 392	33 536	-6
Manicaland	36 757	31 028	18
Midlands	365	687	-46
Masvingo	53	32	65
Matabeleland North			0
Matabeleland South			0
Total	206 212	201 261	2

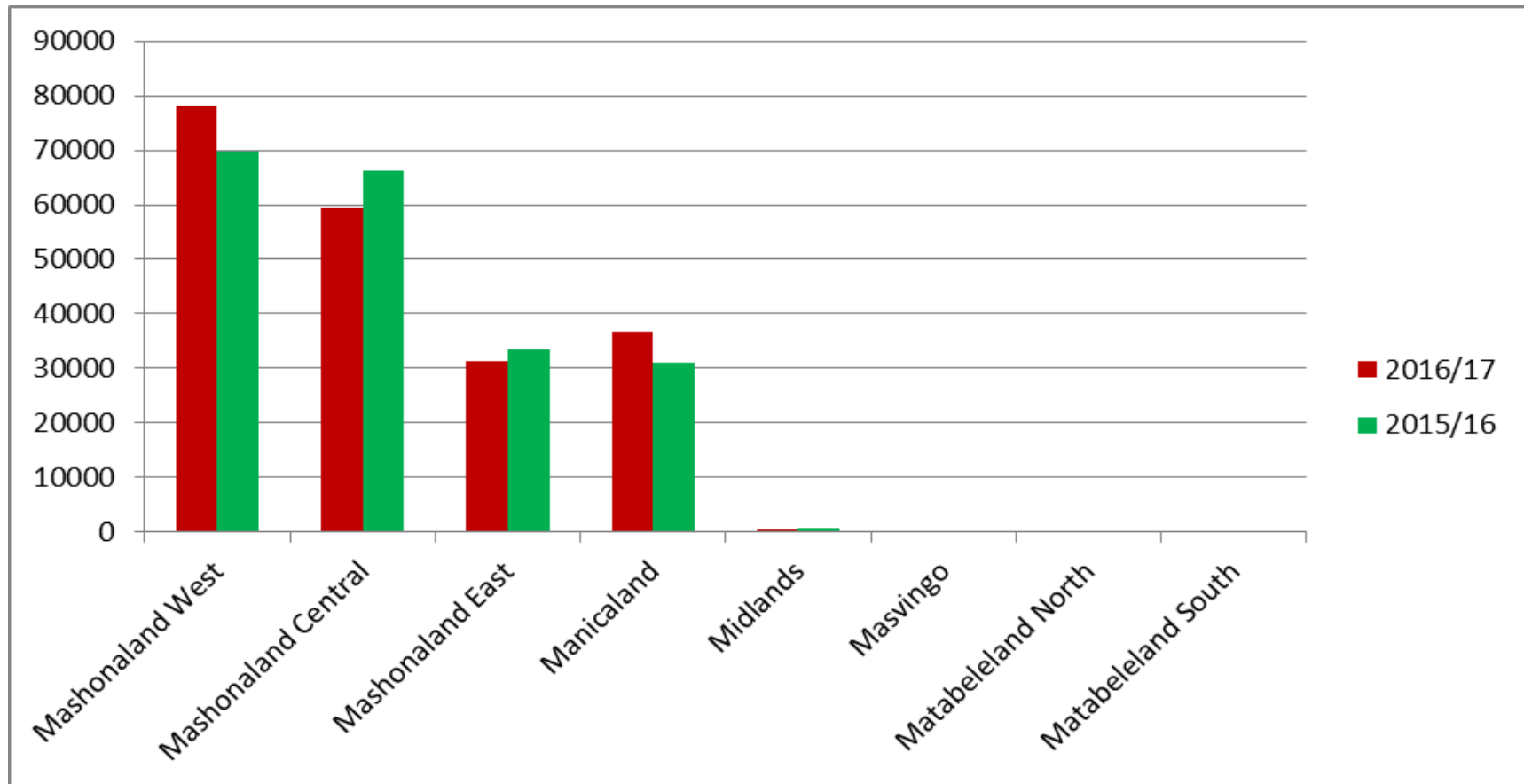
FIGURE 14: TOBACCO PRODUCTION (MT) BY PROVINCE

TABLE 33: TOBACCO YIELD (MT/HA) BY PROVINCE

PROVINCE	2016/17	2015/16	%
Mashonaland West	2	1.9	5
Mashonaland Central	1.8	1.9	-5
Mashonaland East	1.7	1.9	-11
Manicaland	1.9	2	-5
Midlands	1.6	1.5	7
Masvingo	1	0.7	42
Matabeleland North	0	0	
Matabeleland South	0	0	
Average	1.8	1.9	-5

TABLE 34: TOBACCO AREA (HA) BY PROVINCE

PROVINCE	2016/17	2015/16	%
Mashonaland West	39 120	36 274	8
Mashonaland Central	33 003	34 093	-3
Mashonaland East	18 466	17 651	5
Manicaland	19 346	16 014	21
Midlands	228	458	-50
Masvingo	53	46	15
Matabeleland North	0	1	0
Matabeleland South	0	0	0
Total	110 216	104 536	8

2.10 COTTON

TABLE 35: COTTON PRODUCTION (MT) BY PROVINCE

PROVINCE	2016/17	2015/16	%
Mashonaland West	7 853	2 447	221
Mashonaland Central	39 307	5 535	610
Mashonaland East	1 080	750	44
Manicaland	10 638	2 371	349
Midlands	53 239	17 485	204
Masvingo	10 020	3 023	231
Matabeleland North	4 858	1 272	282
Matabeleland South	0	2	100
Total	126 995	32 885	286

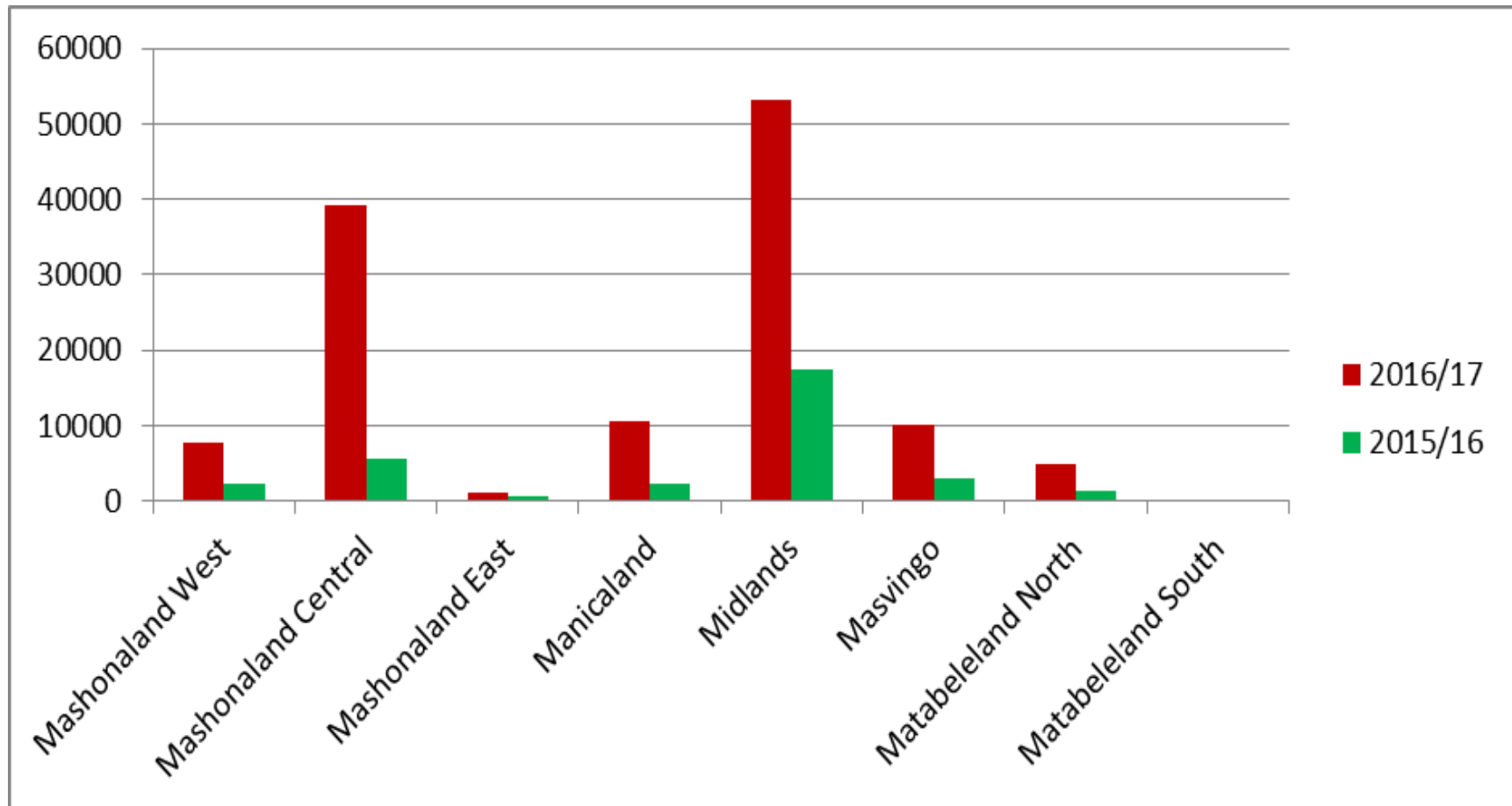
FIGURE 15: COTTON PRODUCTION (MT) BY PROVINCE

TABLE 36: COTTON YIELD (MT/HA) BY PROVINCE

PROVINCE	2016/17	2015/16	%
Mashonaland West	0.65	0.42	55
Mashonaland Central	0.69	0.26	165
Mashonaland East	0.44	0.36	22
Manicaland	0.55	0.3	83
Midlands	0.57	0.33	73
Masvingo	0.57	0.31	84
Matabeleland North	0.79	0.33	39
Matabeleland South	0	0.3	100
Total	0.60	0.32	87.5

TABLE 37: COTTON AREA (HA) BY PROVINCE

PROVINCE	2016/17	2015/16	%
Mashonaland West	12 092	5 787	109
Mashonaland Central	56 927	21 603	164
Mashonaland East	2 445	2 104	16
Manicaland	19 188	7 947	141
Midlands	93 289	52 242	79
Masvingo	17 709	9 859	80
Matabeleland North	6 134	2 113	190
Matabeleland South	2	5	-60
Total	207 786	101 660	104

1.5 SOYABEAN

TABLE 38: SOYABEAN PRODUCTION (MT) BY PROVINCE

PROVINCE	2016/17	2015/16	%
Mashonaland West	14 614	25 587	-43
Mashonaland Central	16 683	16 570	1
Mashonaland East	2 370	2 996	-21
Manicaland	430	956	-55
Midlands	1 641	1 670	-2
Masvingo	3	0	100
Matabeleland North	3	53	-94
Matabeleland South	0	0	0
Total	35744	47832	-25

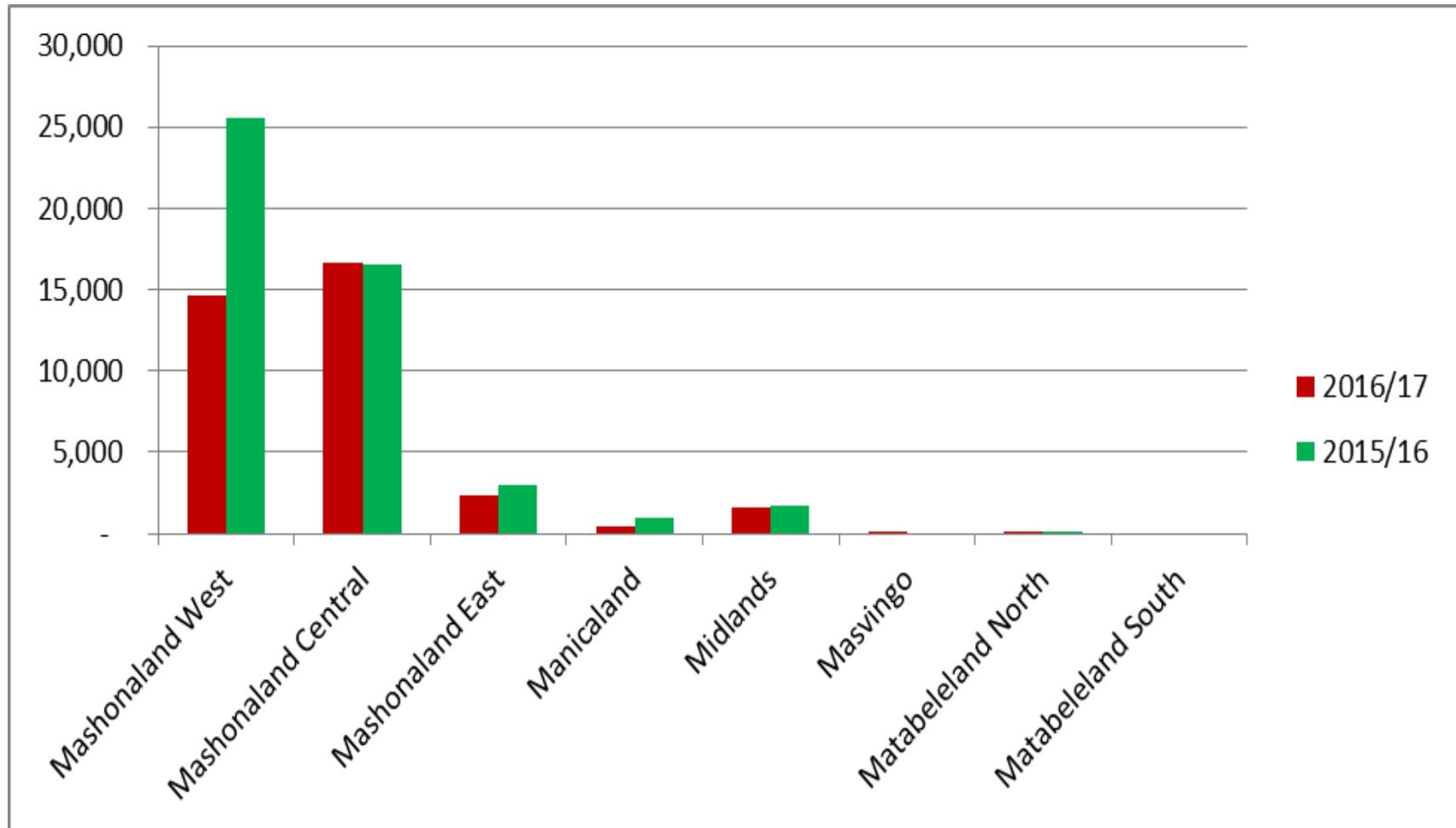
FIGURE 16: SOYABEAN PRODUCTION (MT) BY PROVINCE

TABLE 39: SOYABEAN YIELD (MT/HA) BY PROVINCE

PROVINCE	2016/17	2015/16	%
Mashonaland West	1.48	1.43	3
Mashonaland Central	1.76	0.88	50
Mashonaland East	1.64	1.61	1.8
Manicaland	2.64	3.45	-31
Midlands	2.84	1.67	41
Masvingo	1.5	0.7	53
Matabeleland North	1.35	0.72	47
Matabeleland South	0	0	0
Total	1.66	1.2	28

TABLE 40: SOYABEAN AREA (HA) BY PROVINCE

Province	2016/17	2015/16	%
Mashonaland West	9 876	17 893	-81
Mashonaland Central	9 496	18 830	-98
Mashonaland East	1 445	1 861	-29
Manicaland	163	277	-70
Midlands	577	1 000	-73
Masvingo	2	0	100
Matabeleland North	2	74	-3 600
Matabeleland South	0	0	-
Total	21 561	39 935	-85

2.12 OTHER CROPS

TABLE 41: PRODUCTION OF OTHER CROPS (MT)

CROP	2016/17	2015/16	%
Irish Potatoes	476 088	438 354	9
Sunflower	10 389	3 259	219
Cowpeas	35 895	14 026	156
Cucurbits(Pumpkins, Squash, Marrows, Melons and Butternuts)	69 847	33 700	107
Banana	252 376	229 286	10
Citrus	198 058	193 760	2
Apples	3 250	4 149	-22
Mango	95 475	99 060	-4
Macadamia	5 721	5 658	1
Tea	7 830	10 166	-23
Coffee	500	455	10
Sugarcane	5 562 674	5 440 560	2

TABLE 42: YIELD OF OTHER CROPS (MT/HA)

CROP	2016/17	2015/16	%
Irish Potatoes	23.9	35.0	-32
Sunflower	0.64	0.39	65
Cowpeas	0.45	0.25	82
Cucurbits(Pumpkins, Squash, Marrows, Melons and Butternuts)	3.74	6.94	-46
Cabbages and Leafy Vegetables	28.7	38.5	-25
Tomato	17.9	22.1	-19
Onion	30.3	37.7	-20
Banana	35.1	32.0	10
Citrus	32.3	31.6	2
Apples	21.0	18.4	14
Peaches and Nectarines	23.4	22.6	4
Mango	23.8	25.1	-5
Macadamia	1.42	1.40	1
Tea	1.60	1.61	-1
Coffee	0.83	0.61	37
Sugar cane	79.0	79.2	0

TABLE 43: OTHER CROPS AREA (HA)

CROP	2016/17	2015/16	%
Irish Potatoes	19 920	12 514	59
Sunflower	16 322	8 428	94
Cowpeas	79 831	56 624	41
Cucurbits(Pumpkins, Squash, Marrows, Melons and Butternuts)	18 680	4 855	285
Cabbages and Leafy Vegetables	13 750	9 364	47
Tomato	19 760	15 430	28
Onion	5 890	4 389	34
Banana	7 187	7 165	0
Citrus	6 135	6 135	0
Apples	185	226	-18
Peaches and Nectarines	257	262	-2
Mango	4 005	3 939	2
Macadamia	4 032	4 029	0
Tea	6 572	6 322	4
Coffee	600	750	-20
Sugar cane	70 422	68 680	3

3 LIVESTOCK PRODUCTION

3.1 EXECUTIVE SUMMARY LIVESTOCK

3.1.1 Cattle herd decreased by **0.69%** from **5 528 242** in 2016 to **5 489 720** in 2017.

3.1.2 Water and grazing for livestock is currently adequate and likely to get to the next summer season in most parts of the country; however the grazing quality remains poor.

3.1.3 National average calving rate decreased from **46%** to **45**, the optimum rate is above **60%**.

3.1.4 Diseases associated with heavy rains were a major challenge. These included Lumpy Skin and Foot-rot.

3.1.5 Tick-borne diseases are still a challenge although the dipping program is well supported in terms of acaricide supply and is adequate in most areas.

3.1.6 There were no major disease outbreaks.

3.1 LIVESTOCK NUMBERS

3.1.1 CATTLE

TABLE 44: CATTLE DISTRIBUTION BY PROVINCE

Province	2016/17	2015/16	%
Mashonaland West	594 110	585 850	1
Mashonaland Central	534 478	506 892	5
Mashonaland East	662 158	653 759	1
Manicaland	618 120	615 190	-1
Midlands	728 564	763 794	-5
Masvingo	1 010 382	1 002 446	1
Matabeleland North	656 898	557 652	18
Matabeleland South	685 010	615 073	11
Total	5 489 720	5 300 656	4

3.1.1.1 90% of cattle is owned by smallholder farmers (68% communal, 11% A1, 7% OR, 4% SSCF) with the LSCFA owning 10%.

3.1.2 SHEEP

TABLE 45: SHEEP DISTRIBUTION BY PROVINCE

Province	2016/17	2015/16	%
Mashonaland West	15 320	27 452	-44
Mashonaland Central	18 479	69 966	-74
Mashonaland East	37 173	41 870	-11
Manicaland	74 625	113 825	-34
Midlands	23 132	22 055	5
Masvingo	95 455	96 870	-1
Matabeleland North	28 513	59 395	-52
Matabeleland South	86 222	72 872	18
Total	378 919	504 305	-25

3.1.3 GOATS

TABLE 46: GOAT DISTRIBUTION BY PROVINCE

Province	2016/17	2015/16	%
Mashonaland West	245 499	328 856	-25
Mashonaland Central	316 565	288 165	10
Mashonaland East	284 826	206 483	38
Manicaland	553 294	548 414	1
Midlands	432 806	434 304	0
Masvingo	620 513	620 171	0
Matabeleland North	417 266	353 729	18
Matabeleland South	534 613	619 342	-14
Total	3 405 382	3 399 464	1

3.1.4 PIGS

TABLE 47: PIGS DISTRIBUTION BY PROVINCE

Province	2016/17	2015/16	%
Mashonaland West	27 705	24 509	13
Mashonaland Central	89 541	182 475	-51
Mashonaland East	49 912	51 169	-2
Manicaland	40 357	44 026	-8
Midlands	25 127	29 721	-15
Masvingo	37 123	43 109	-14
Matabeleland North	16 120	25 403	-37
Matabeleland South	26 031	25 128	4
Total	311 916	425 540	-27

3.1.4.1 The current commercial sow herd has grown up to **14 000** from **11 000** the previous year.

3.1.5 DONKEYS

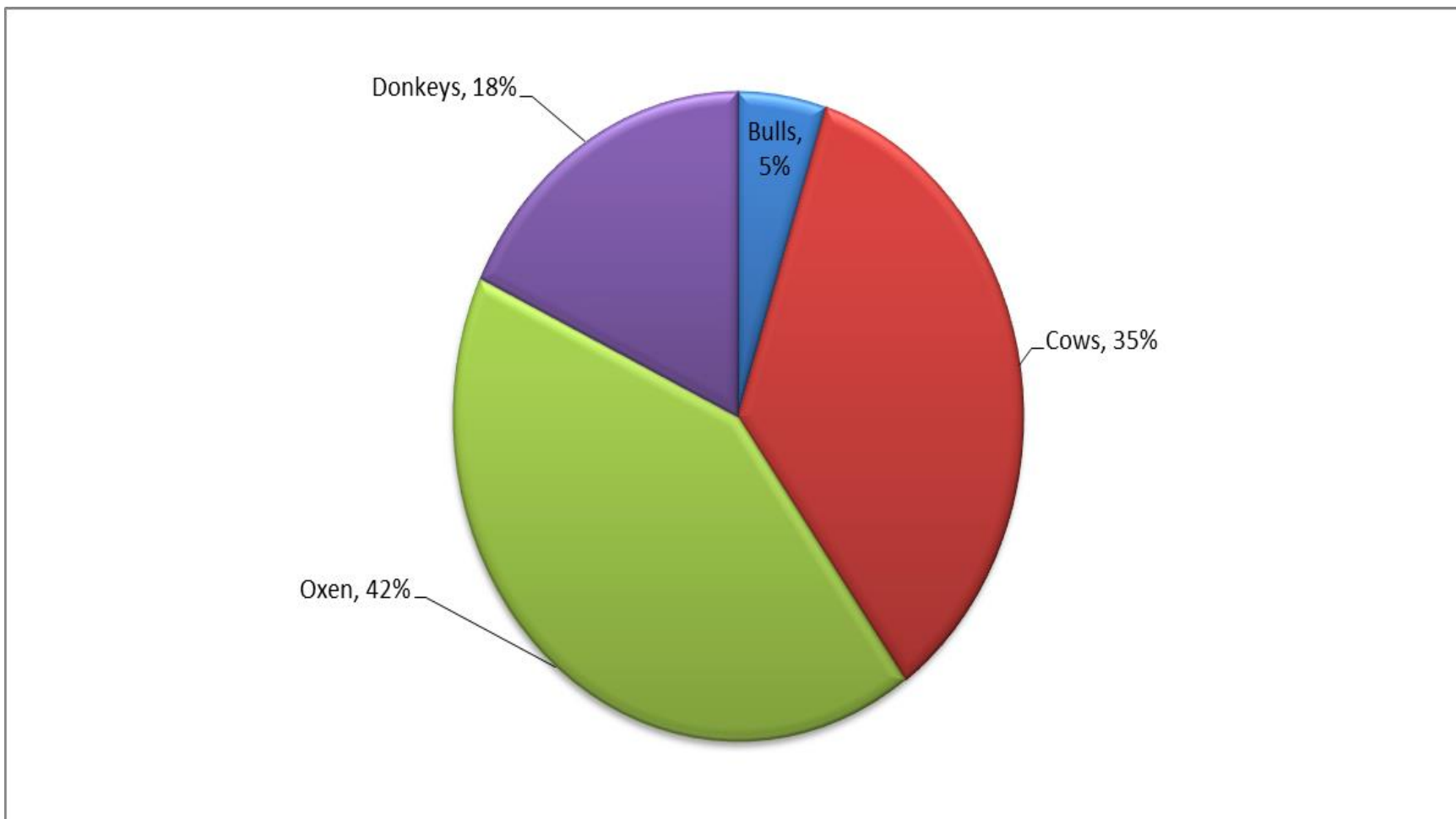
TABLE 48: DONKEYS DISTRIBUTION BY PROVINCE

Province	2016/17	2015/16	%
Mashonaland West	13 558	13 322	2
Mashonaland Central	7 081	7 255	-2
Mashonaland East	9 545	9 400	2
Manicaland	37 457	35 488	6
Midlands	90 001	88 134	2
Masvingo	85 332	86 198	-1
Matabeleland North	101 948	102 572	-1
Matabeleland South	132 176	130 384	1
Total	477 098	472 752	1

3.1.5.1 Almost 80% of donkeys are in the Communal Areas

3.3 DRAFT POWER

FIGURE 17: CONTRIBUTION OF LIVESTOCK TO DRAFT POWER



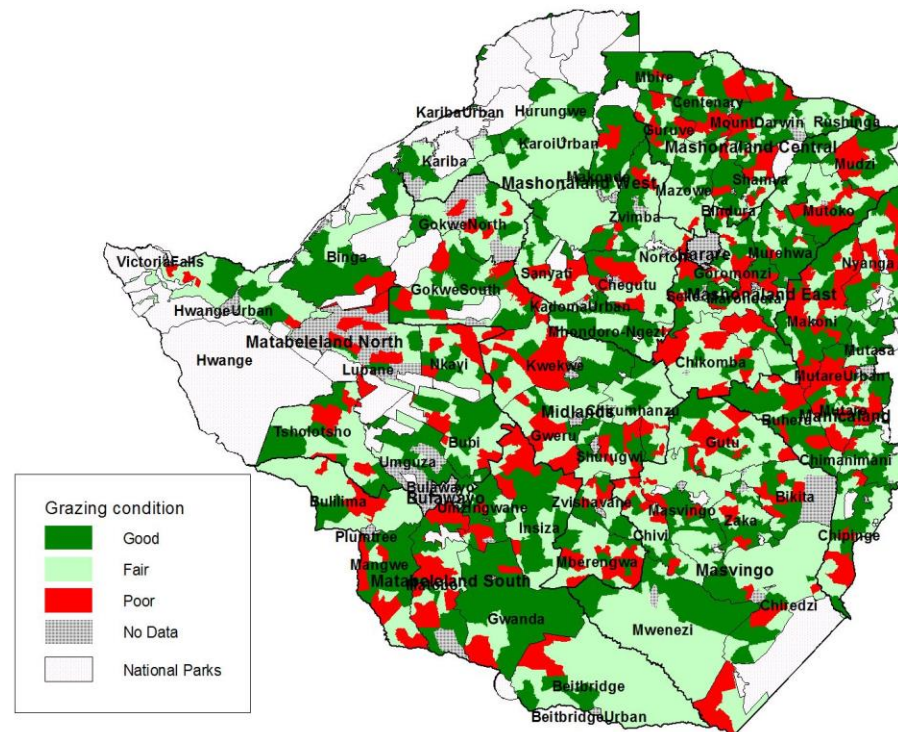
3.3 GRAZING QUALITY

3.3.1 Quality of grazing in Communal and Old Resettlement areas has been gradually deteriorating due to droughts.

3.3.2 Recurrence of droughts reduced the seed bank of palatable grasses.

3.3.3 Grasses with poor grazing value like the *Sporobolus species* have invaded most grazing areas.

FIGURE 19: GRAZING QUALITY



4 LIVESTOCK PRODUCTIVITY

4.1 CALVING RATES

4.1.1 The calving rate went down from 46% in 2015 to 45% in 2016.

4.1.2 The national target is above **60%**.

4.2 CATTLE OFF TAKE

4.2.1 Cattle Off take ranged from **5%** to **11%** across all farming sectors.

4.2.2 The national average cattle off take remains around 6%. The national target is 15%.

4.3 KIDDING RATE

4.3.1 Kidding rate was at **98%** which is lower than the national target of **120%**.

4.4 LAMBING RATE

4.4.1 Lambing rate is at **65%**, which is below the national target rate of **100%**.

4.5 BROILER PRODUCTION

4.5.1 Monthly day old broiler chick production declined to **6.2 million** birds per month in 2016 from **6.3 million** birds per month in 2015.

4.5.2 Total annual day old broiler chick production decreased by **1%** from **75.55 million** in 2015 season to **74.8 million** in 2016.

5 LIVESTOCK SLAUGHTERS AT FORMAL ABATTOIRS

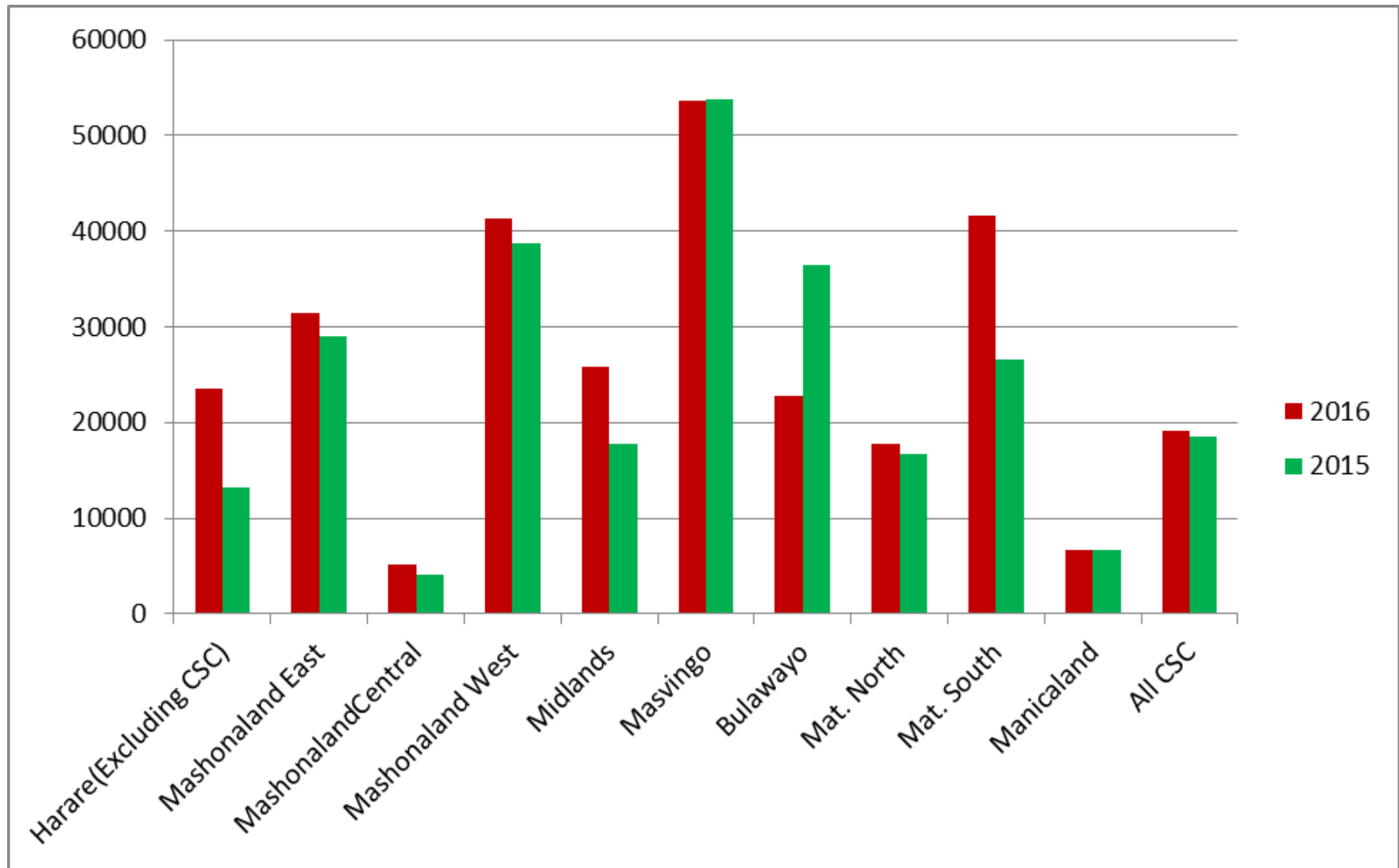
5.1 CATTLE SLAUGHTER

5.1.1 Total cattle slaughtered in 2016 at formal abattoirs was **288 707** up from **261 658** in 2015 which is a **10%** increase.

5.1.2 Average carcass weights for beef animals dropped from **170kg** in 2015 to **165kg** in 2016. This can be attributed to the poor body condition as a result of the drought.

TABLE 49: CATTLE SLAUGHTERS

Province	2016	2015	%
Harare(Excluding CSC)	23 491	13 242	77
Mashonaland East	31 452	28 995	8
Mashonaland Central	5 125	4 080	26
Mashonaland West	41 334	38 772	7
Midlands	25 853	17 755	46
Masvingo	53 629	53 824	0
Bulawayo	22 714	36 517	-38
Matabeleland North	17 698	16 746	6
Matabeleland South	41 656	26 569	57
Manicaland	6 630	6 628	0
All CSC	19 125	18 530	3
Total	281 916	264 444	7

FIGURE 21: CATTLE SLAUGHTERS

5.2 CATTLE SLAUGHTER GRADES

5.2.1 There was a slight decrease in the quality of meat as evidenced by an increase in the economy grades and a decrease in the proportion of super grades compared to 2015 figures.

5.2.2 Proportion of animals grading **commercial** to **super** was 65% in 2015 and 58% in 2016. This was most likely related to the poor season where grazing was not adequate in most areas due to drought caused by the *El Nino* effect.

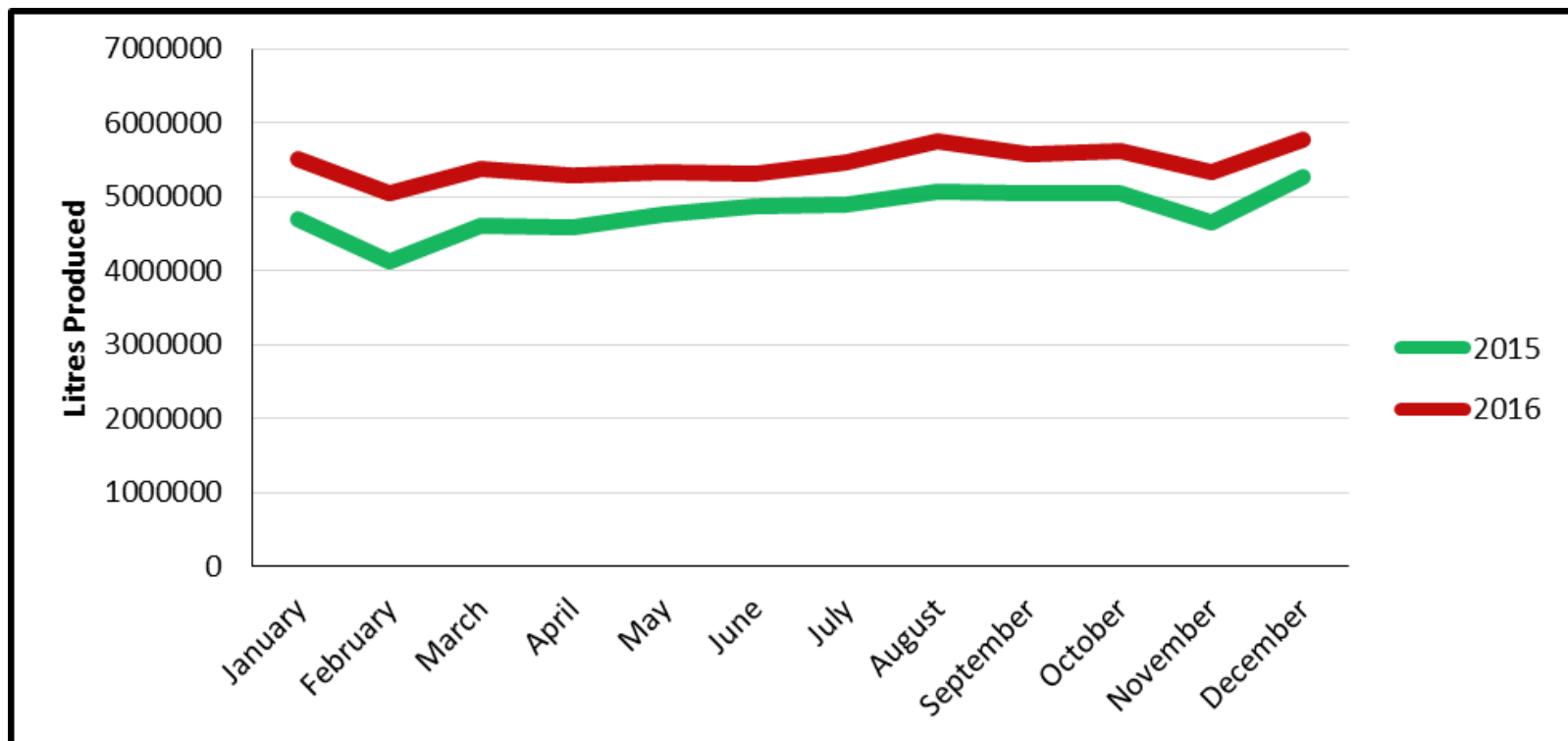
TABLE 50: TRENDS IN GRADES FOR CATTLE SLAUGHTERED

Year	Super	Choice	Commercial	Economy	Manufacturing
	%				
2016	17	4	37	37	5
2015	21	7	37	31	5
2014	22	6	33	34	5

6 MILK PRODUCTION

- 6.1** Total milk production continues to increase. Volumes rose by **13.6%** from **57 million litres in 2015** to **65 million litres** in 2016.
- 6.2** Efforts to rebuild the dairy herd by milk processors and the Dairy Revitalization Programme through importation of dairy animals will help improve production further.

FIGURE 22: MILK PRODUCTION TREND



7.1 TICK-BORNE DISEASES

7.1.1 Tick-borne diseases were reported in all provinces with Anaplasmosis and Heartwater being the two diseases commonly reported.

7.1.2 Theileriosis was a major disease in Masvingo province especially in Chiredzi and Mwenezi districts where 80% of the total cases were reported.

TABLE 51: TICK BORNE DISEASE

Disease	Cases	Deaths	Case fatality rate (%)
Bovine anaplasmosis	5 226	927	18
Bovine babesiosis	1 973	306	16
Heartwater	4 772	1 505	32
Theileriosis	571	256	45
Total	12 542	2 994	

7.2 FOOT AND MOUTH DISEASE

7.2.1 There were no primary outbreaks reported during the year. Secondary outbreaks were reported in 13 districts in four provinces.

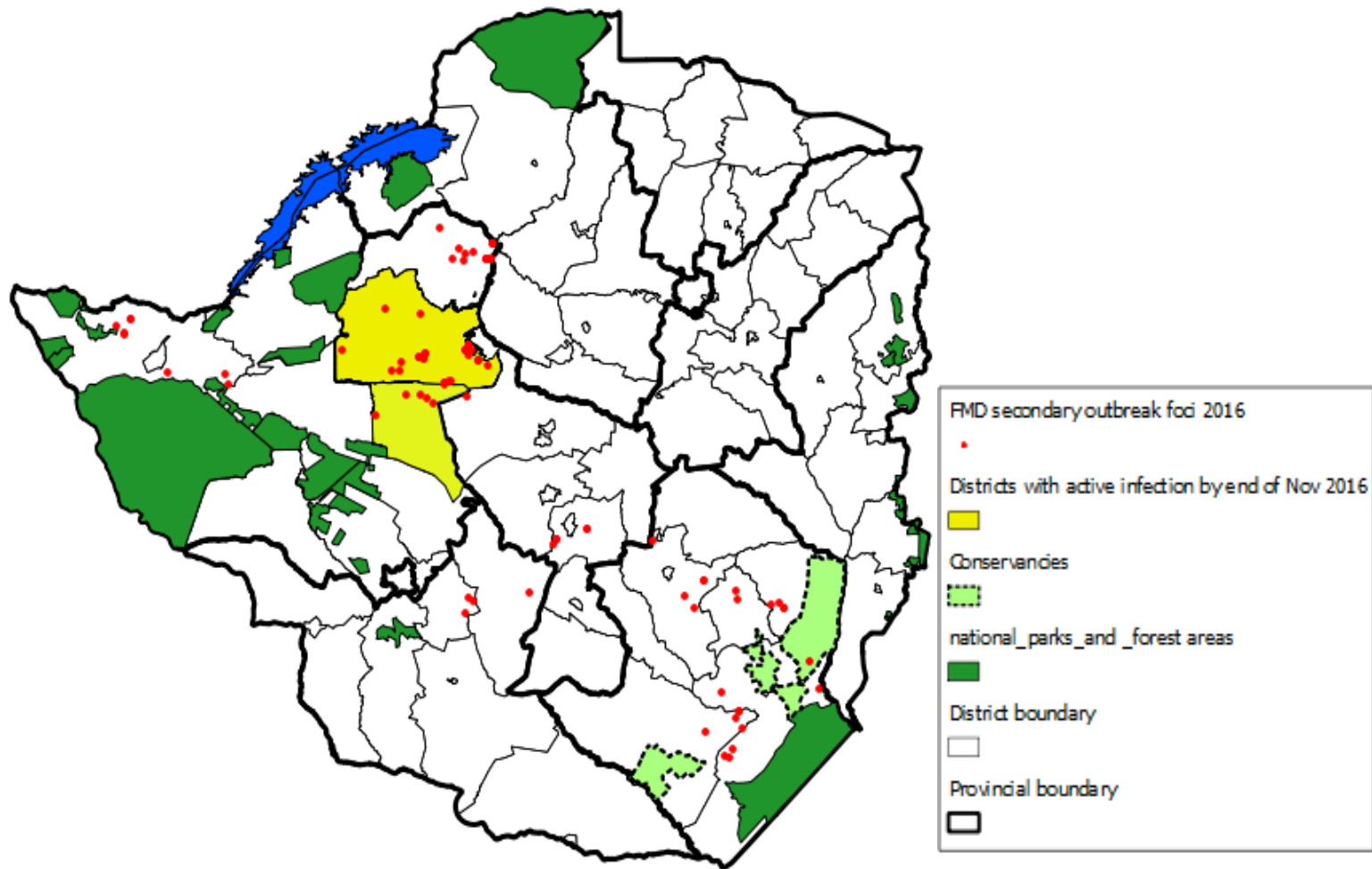
7.2.2 By end of November 2016 the disease was active in two districts, Nkayi and Gokwe South.

7.2.3 The disease affected 2 847 cattle at 72 dip tanks with a total cattle census of 106 014, apparent morbidity rate of 3%.

7.2.4 Control measures taken included ring vaccination of outbreak areas, high risk areas and restricted livestock movement.

7.2.5 The vaccination program had one round of vaccination along the Botswana border in the joint program between the two governments.

FIGURE 24: FMD OUTBREAK FOCI 2016/2017



7.3 NEWCASTLE

7.3.1 The disease was reported in 16 districts at 44 locations with a total loss of 2 785 birds.

7.3.2 The local central veterinary laboratory managed to produce 15.8 million doses of Newcastle vaccine.

7.3.3 A total of 7.2 million vaccinations were done by end of November 2016.

7.3.4 The major challenge with vaccine production is timing as it does not tally with the programs in the field.

TABLE 52: NEWCASTLE VACCINATION IN THE LAST FIVE YEARS

Year	Newcastle Disease vaccinations
2016	7 238 262
2015	3 883 644
2014	6 586 888
2013	4 826 474
2012	12 089 527

7.4 RABIES

7.4.1 All provinces reported the disease with the highest cases in Masvingo province. Dogs were the most commonly affected.

7.4.2 Vaccination campaigns were carried out in all the districts, cities and towns with a total of **238 790** vaccinations carried out.

TABLE 53: RABIES CASES BY PROVINCE

Province	Cases
Mashonaland West	50
Mashonaland Central	10
Mashonaland East	14
Manicaland	12
Midlands	36
Masvingo	113
Matabeleland North	13
Mat South	78
Total	326

TABLE 54: RABIES CASES BY SPECIES

Species	Cases
Cat	7
Cattle	60
Civet cat	2
Dog	222
Donkey	14
Goat	17
Jackal	2
Total	324

7.5 ANTHRAX

7.5.1 The disease claimed **63** cattle from nine districts country wide.

7.5.2 Availability of the vaccine was the main challenge.

7.5.3 A total of **317 972 cattle** were vaccinated against anthrax in the anthrax prescribed areas and new outbreak areas by the end of November 2016.

7.6 CATTLE LOSSES DUE TO STARVATION

7.6.1 The *El Nino* induced drought of the 2015/16 agriculture season affected availability of grazing in the southern districts of the country. This led to significant cattle mortalities especially in Masvingo province.

7.6.2 Subsidized stock-feed programmes for farmers were initiated in the Districts of Chiredzi, Mwenezi, Chivi, Tsholotsho, Zvishavane, Mberengwa, Umzingwane, Insiza, Gwanda and Bulilima.

7.6.3 Water challenges also contributed largely to cattle mortalities.

7.6.4 Animals were moving long distances to watering points where they had to compete with human requirements.

7.6.5 A lot of animals succumbed while looking for water especially those that were pregnant. With drinking water, an animal can survive longer even without food.

7.7 STOCK THEFT

7.7.1 There has been a **25%** decline in the number of reported stock theft cases in 2016 compared to 2015.

7.7.2 **5 186** cattle were reported stolen in 2016 compared to **5 293** in 2015.

7.7.3 The recovery rate went up to **68%** from **55%** in 2015 thus limiting damaging losses to farmers.

7.8 STOCK FEED AVAILABILITY

7.8.1 Stock feeds are available on the market and prices have been stable.