



**MINISTRY OF LANDS, AGRICULTURE, WATER, CLIMATE AND RURAL
RESETTLEMENT**

Meteorological Services Department

Telephone: +263 (0242) 778 209, (0242) 778 161, (0242) 778 173.

Website: www.msd.org.zw



P.O.Box BE 150, Belvedere, Harare, Zimbabwe
All correspondences should be addressed to the Director

Minimizing Risks through Science

WEEKLY RAINFALL BULLETIN

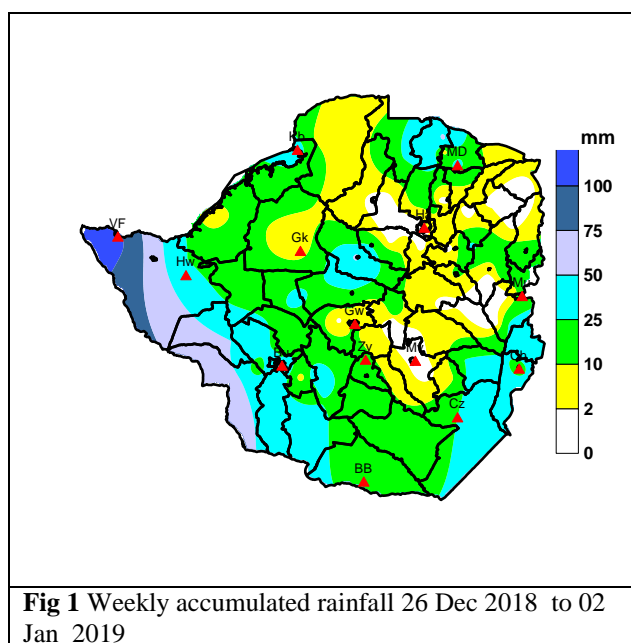
Issue N^o : 10

Validity Period : 03 Jan – 09 January 2019

Season : 2018-2019

Release date : 02 January 2019

Disclaimer: This information is provided with the understanding that the Zimbabwe Meteorological Services Department makes no warranties, either expressed or implied, concerning the accuracy, completeness, reliability, or suitability of the forecast or outlook contained in this document. The information may be used freely by the public with appropriate acknowledgement of its source, but shall not be modified in content and then presented as original material.



SUMMARY OF PAST WEEK

Significant rainfall amounts of above 50mm were recorded in the western parts of the country (Matabelelands) whilst for most parts less than 25mm was received for the period 26 December 2018 to 2 January 2019 (Fig 1 and Table 1). Sunny and hot conditions mostly prevailed during the past week.

Table 1: Station Weekly Totals for the period 26 December 2018 to 02 January 2019

Stn	Weekly	Stn	Weekly	Stn	Weekly	Stn	Weekly
Macheke	29.0	Chibero	7.0	Chakari	18.0	Makuti	5.1
Nyamaropa	0	Binga	5.5	Lupane	16.0	Nyazura	0
Selous	0	Mayo	2.2	Pioneer Juru	0	Wha wha	3.5
Norton	0	Chisengu	44.2	Gunura	0	Kariba	32.6
Zvimba	0	Harare		Chisumbanje	49.8	Chimhanda	0
Harare Belvedere	0	Kutsaga	11.0	Beatrice	2.5	Mutasa DC	22.0
Harare Crowborough	2.0	Chipinge	18.0	Karoi	5.8	Nyanga Exp Stn	16.0
Rushinga	10.2	Zaka	6.8	Matopos	24.2	Buffalo Range	24.8
Mvurwi	14.0	Guruve	26.3	Raffingora	8.0	Mvuma	15.0
Lusulu	16.0	Nkayi	28.8	Shurungwi	0	Mutare Fire Stn	23.0
Rusape	3.3	Tsholotsho	50.1	Mukandi	12.3	Plumtree	65.0
Zvishavane	16.7	Hwange NP	26.1	Odzi	0	Mupfurudzi	5.3
Henderson	3.3	Gweru	13.2	Masvingo	1.1	Filabusi	32.7
Murehwa	1.0	Kwekwe	22.6	Bulawayo Apt	24.9	Nyanyadzi	0
Chegutu Agric	24	Chinhoyi	0	Bikita	25.6	Chivhu	4.5
Bindura University	12.1	Nyakomba	0	Chatsworth	0	Kotwa	4.3
Arcturus	17	Dotito	53	Gwangwava	9.0		
Concession	18.5	Gokwe	4.2	West Nicholson	25.5		
Bulawayo Goetz	47.2	Rupike Irrig.	0	Mt Darwin	29.9		
Murambinda	0	Banket	0	Wedza	11.9		
		Mutoko	0				

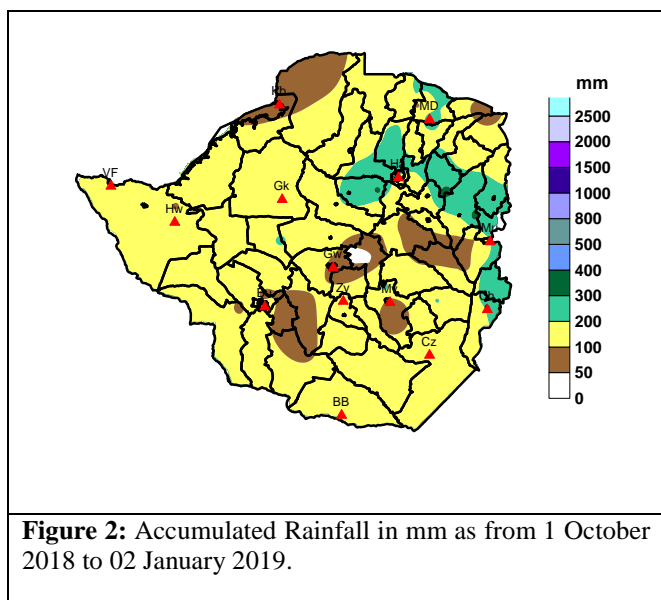


Figure 2: Accumulated Rainfall in mm as from 1 October 2018 to 02 January 2019.

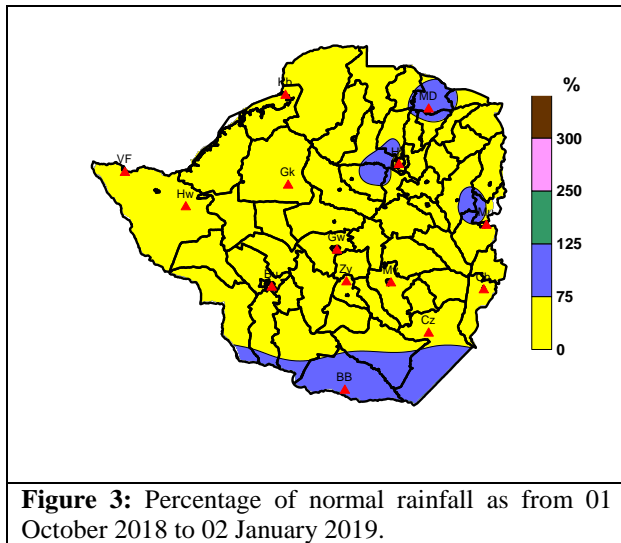
SEASONAL ACCUMULATED PRECIPITATION

Most parts of the country as of 2 January 2019 had received accumulated precipitation totals in the range 100mm to 200mm as shown in Fig 2 and Table 2 below. The highest rainfall totals since the start of the rainfall season (1 October 2018) have been received in parts of Manicaland and Mashonaland Provinces. There are still portions of the country that have received accumulated rainfall below 100mm as shown by the brown colour in Fig 2.

The rainfall received to date has been poorly distributed (both in time and space).

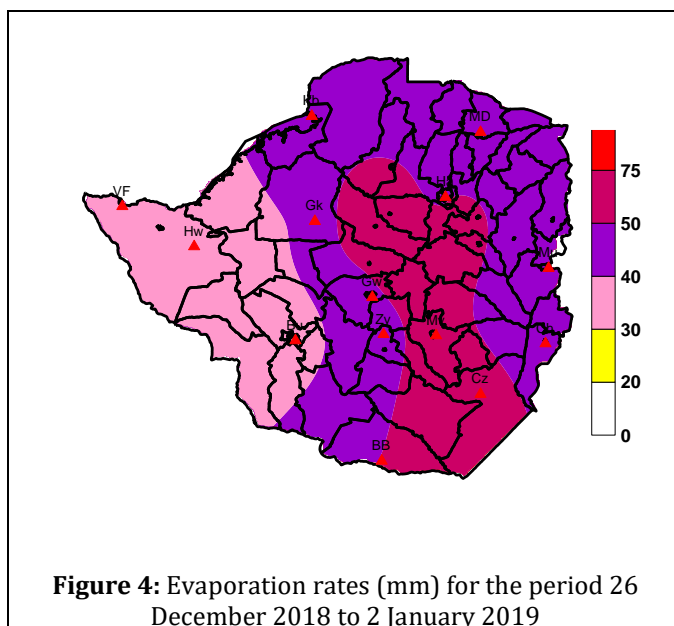
Table 2: Accumulated Rainfall as of 2 January 2019

Stn	Acc	Stn	Acc	Stn	Acc	Stn	Acc
Chibero	327.3	Arcturus	222.5	Nyakomba	140.9	Hwange NP	97.5
Selous	259.0	Mhondoro	185.7	Kwekwe	156.2	Matopos	119.0
Mukandi	280.7	Harare Kutsaga	172.6	Guruve	161.8	West Nicholson	91.8
Norton	250.0	Mutasa DC	190.0	Chivhu	111.0	Figtree	80.0
Henderson	248.0	Nyazura	144.5	Tsholotsho	149.8	Gweru	76.2
Chisengu	287.4	Nkayi	210.5	Beatrice	130.5	Buhera	87.1
Makoholi	226.6	Nyanga	217.7	Lupane	116.2	Bulawayo Apt	88.1
Macheke	322.5	Chakari	171.5	Centenary	195.5	Victoria Falls	174.4
Murehwa	272.5	Beitbridge	154.4	Gunura	100.0	Nyanyadzi	67.0
Chegutu Agric	242.5	Zvishavane	158.7	Dotito	203.5	Buffalo Range	151.2
Rushinga	248.2	Gwangwava	183.0	Odzi	100	Rupike Irrig.	67.1
Zvimba	213.5	Mt Darwin	225.9	Gokwe	120.5	Esigodini	64.2
Harare Crowborough	252.7	Banket	168.0	Wedza	117.0	Raffingora	113.2
Harare Bvdre	207.2	Mutare	322.6	Mutoko	160.3	Mupfurudzi	77.8
Bikita	206.1	Harare Apt	136.0	Bulawayo Goetz	150.4	Chatsworth	49.0
Nyamaropa	210.4	Zaka	141.2	Chisumbanje	146.5	Shurungwi	127.2
Chimhandanda	212.0	Pioneer Juru	143.0	Plumtree	158.2	Makuti	53.9
Mvurwi	207.2	Bindura University	189.5	Murambinda	83.0	Kariba	84.6
Concession	228.5	Mayo	140.7	Kezi	127.0	Lalapanzi	32.8
Chinhoyi	188.4	Lusulu	131.5	Masvingo	78.3	Mvuma	46.0
Rusape	217.8	Marondera	122.8	Wha wha	81.5	Filabusi	62.7
Chimanimani	209.2	Shamva Agric	172.0	Binga	110.2		
Karoi	148.8	Kanyemba	111.9	Kotwa	71.8		



NORMAL PRECIPITATION PERCENTAGE

The country has experienced a below average rainfall season to date with most parts having received below 75% of their long-term mean rainfall (yellow color). A few areas of the country have received total rainfall comparable to their long term mean (blue colour). Fig 3 shows the percentage of normal for the stations across the country.



EVAPORATION

Highest evaporation rates were in the range 50 to 75mm as a result of the mostly clear skies during the past week in those areas. The western parts of the country recorded the lowest evaporation rates (30 to 40mm) (Fig 4).

WEATHER OUTLOOK FOR THE PERIOD 4 TO 9 JANUARY 2019

Rainfall activity is expected to be heavier in parts of the Mashonaland, north of Midlands, north of Manicaland and Matabeleland North in comparison to the southern regions; south of Manicaland, south of Midlands and Matabeleland South. Accumulated rainfall expected for the forecast period is shown in Fig 5.

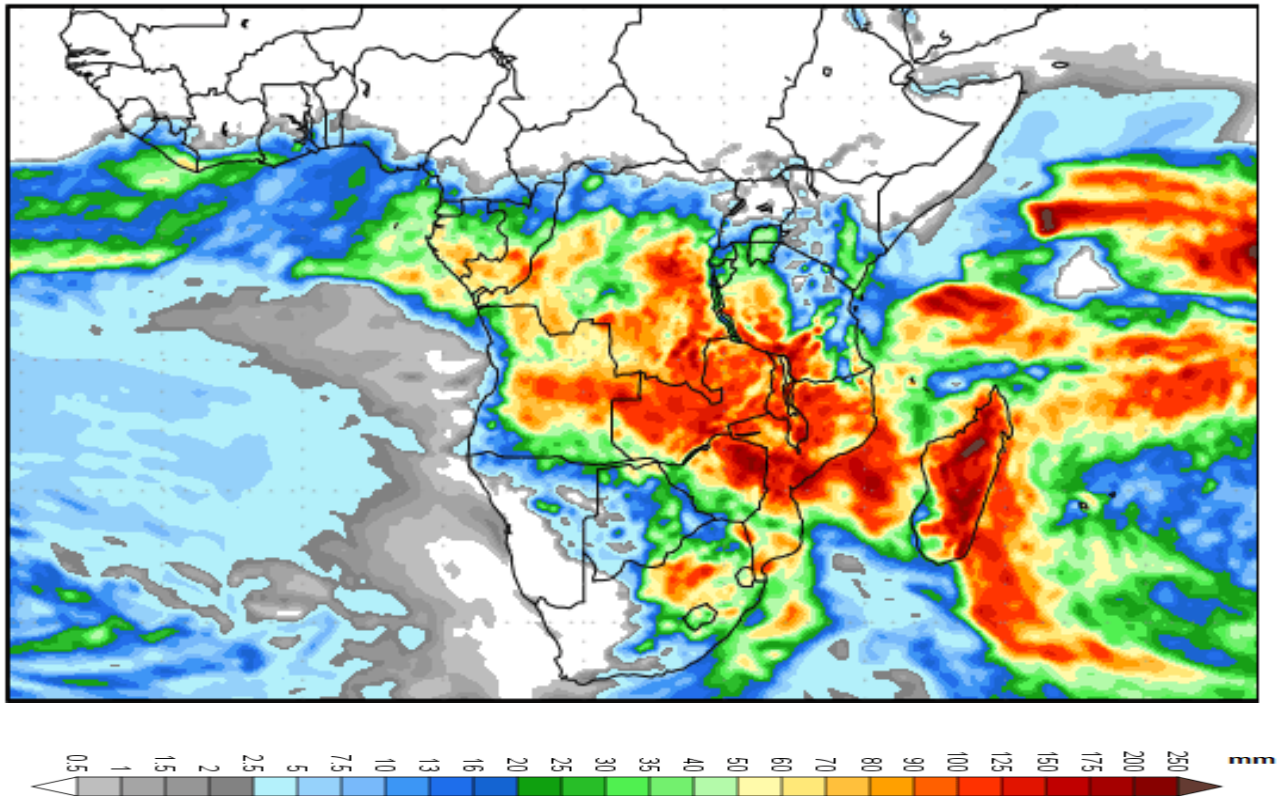


Figure 5: Accumulated precipitation forecast for the period 3 to 9 January 2019 (courtesy of National Center for Environmental Prediction)

Disclaimer: This information is provided with the understanding that the Zimbabwe Meteorological Services Department makes no warranties, either expressed or implied, concerning the accuracy, completeness, reliability, or suitability of the forecast or outlook contained in this document. The information may be used freely by the public with appropriate acknowledgement of its source, but shall not be modified in content and then presented as original material.