

WEEKLY RAINFALL BULLETIN

RELEASED: 13 FEBRUARY 2019

SEASON: 2018-2019

VALID: 14 FEBRUARY TO 20 FEBRUARY 2019

WEEKLY RAINFALL BULLETIN

BULLETIN N°16

Contents

Summary of the past week.....	2
Seasonal Accumulated Precipitation.....	2
Normal Precipitation Percentage.....	3
Evaporation.....	3
Weather Outlook for the Precipitation Period 08 February to 15 February 2019.....	4
Data Table.....	5

for more information and daily updates follow us on:

Twitter: <https://twitter.com/MSDZIM>

Facebook: <https://www.facebook.com/Meteorological-Services-Department-of-Zimbabwe-1466334176961651/>

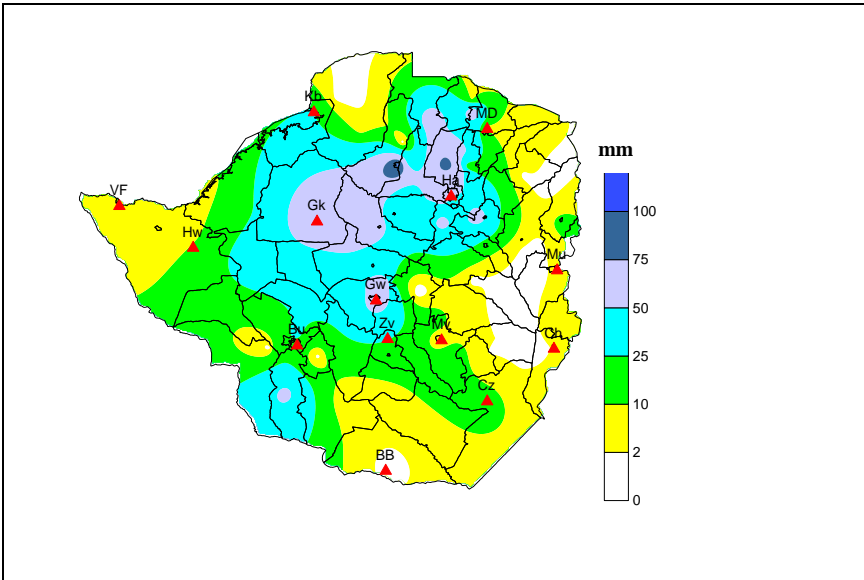


Figure 1 Weekly accumulated rainfall 07 February 2019 to 13 February 2019

SUMMARY OF PAST WEEK

Chinhoyi recorded the highest weekly total of 102.5 mm followed by Concession where 86 mm was recorded for the same period. The central parts of the country received weekly amounts ranging between 10 to 75 mm. A considerable number of places in Manicaland did not receive any rains during the past week as shown in the map. Fig 1 shows the situation across the country.

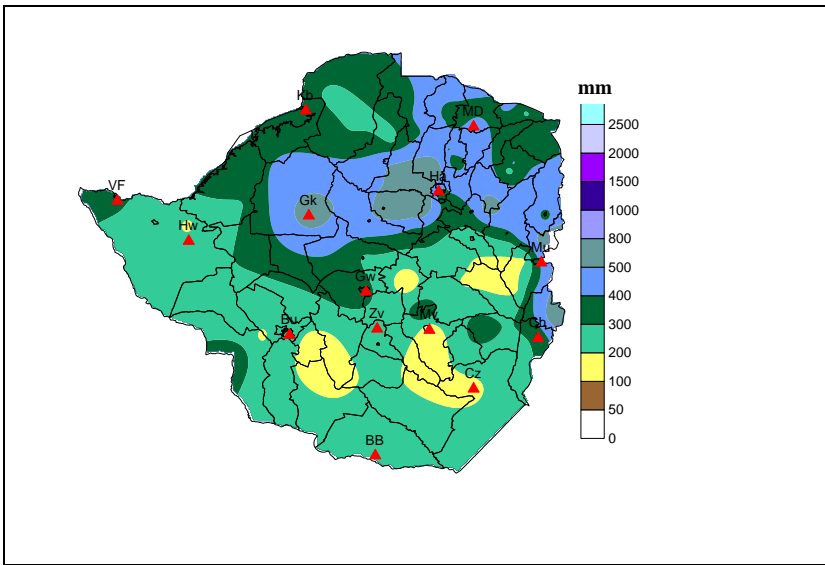
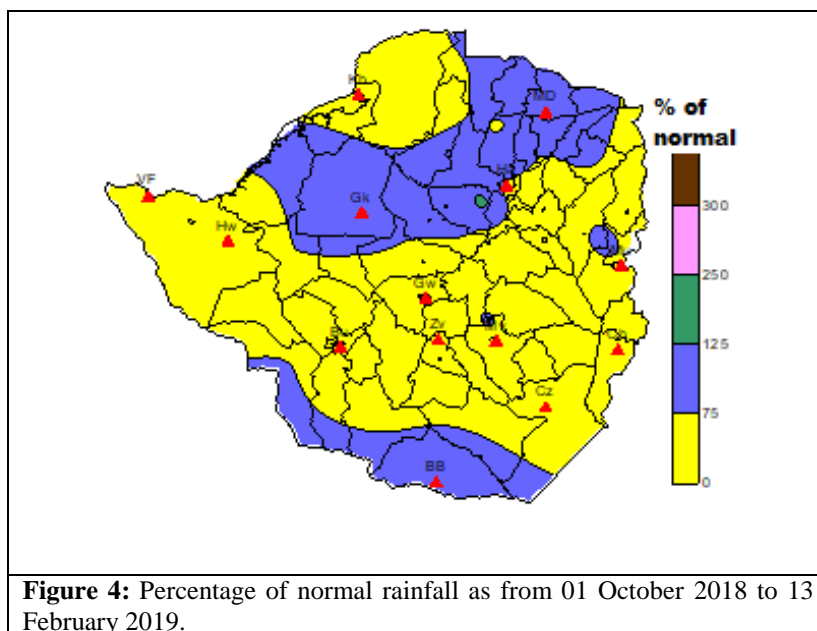


Figure 2: Accumulated Rainfall in mm as from 1 October 2018 to 13 February 2019.

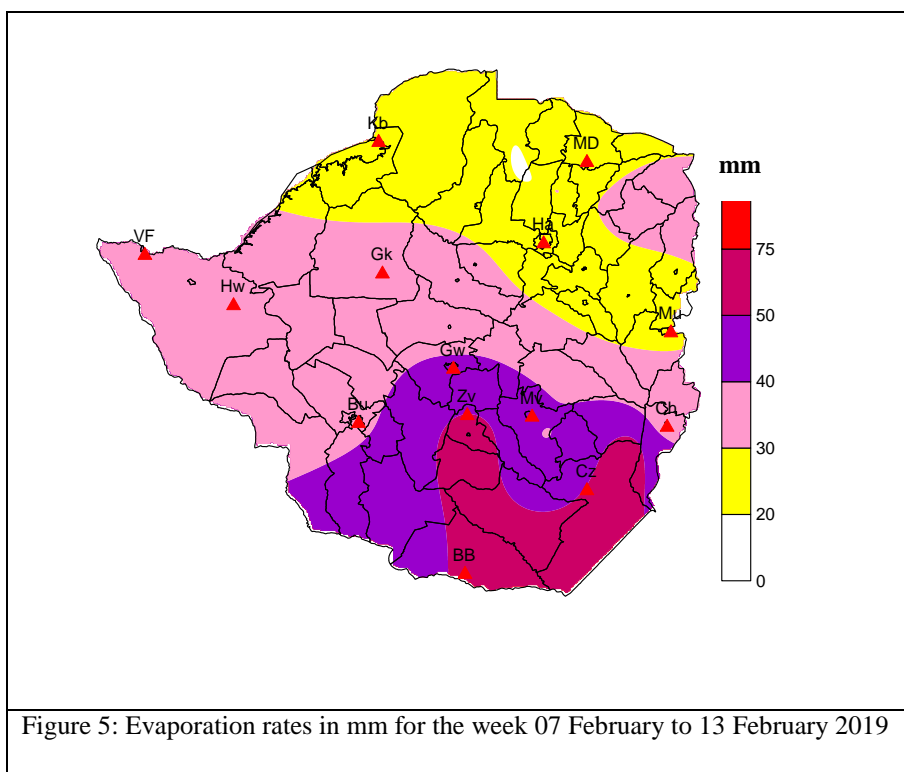
SEASONAL ACCUMULATED PRECIPITATION

Parts of the Mashonaland Provinces, Midlands Province and Manicaland Province have received the highest rainfall amounts since the start of the season (Fig 2). The highest accumulated rainfall in the season has been recorded at Chibero with 750.9mm followed by with Selous 615.5mm and Norton 586.0mm. The bulk of stations to date have recorded more than 250mm.



PERCENTAGE OF NORMAL PRECIPITATION

Fig 4 shows the percentage of normal across the country. The map clearly shows that the greater part of the country has received cumulative rainfall amounts that are still below the normal range (75 – 125% of the long term average).



EVAPORATION

The evaporative rates were generally high due to frequent sunny breaks that prevailed across most of the country from Saturday 9 February. It was generally clear in the southern parts of the country (Masvingo and Matabeleland South). The highest evaporation rates were recorded in Chiredzi and Mwenezi districts (see Fig 5). Evaporation rates in the northern parts of the country were subdued due cloudy conditions.

WEATHER OUTLOOK FOR THE PERIOD 14 FEBRUARY TO 20 FEBRUARY 2019

Considerable rainfall activity is forecast throughout the country. Cumulative amounts above 80 mm are expected over the southern and eastern parts of the country. Thunderstorm activity is forecast in some areas in the southern and eastern parts of the country. Fig 6 shows expected rainfall amounts.

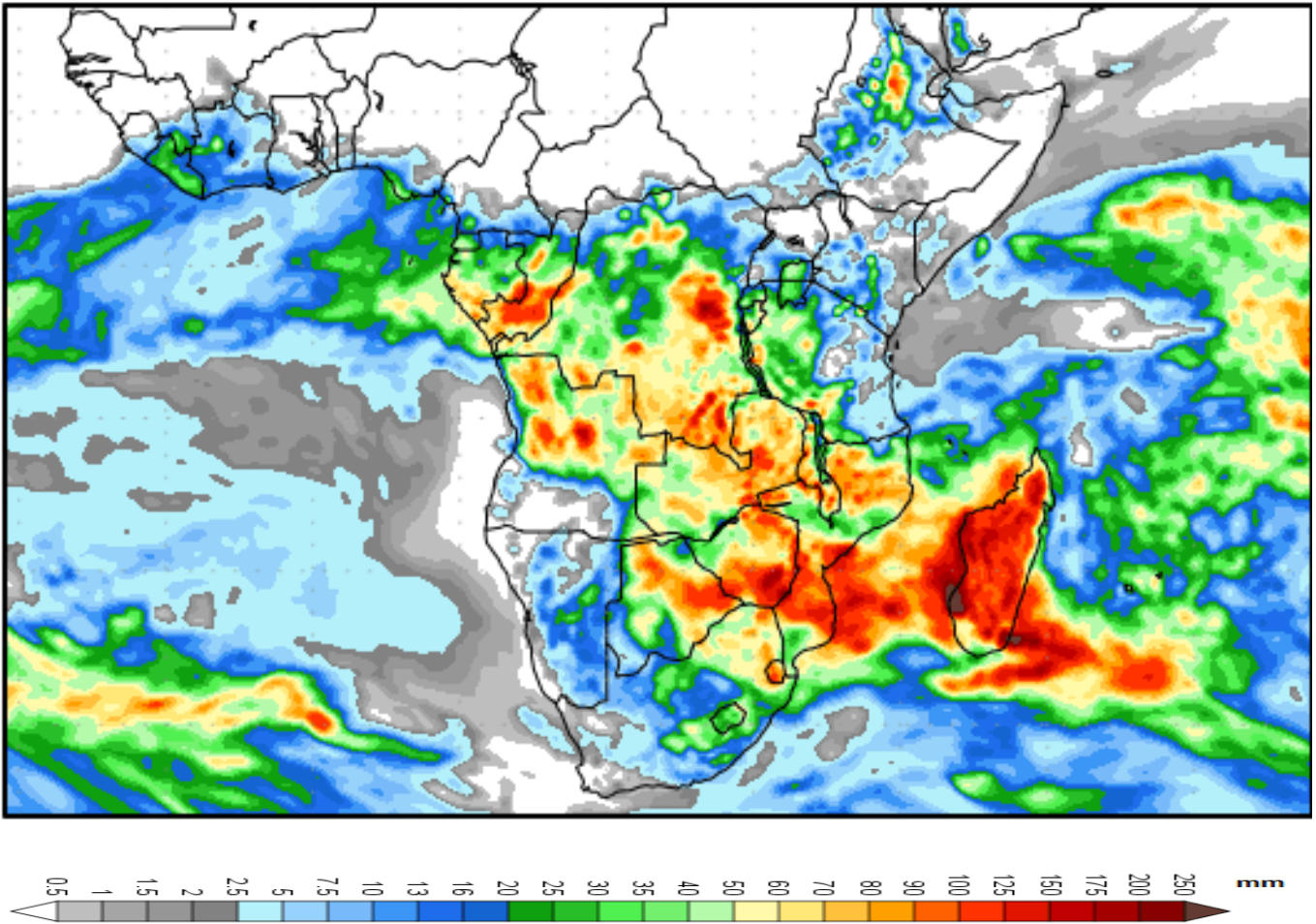


Figure 6: Accumulated precipitation forecast for the period 13 February to 21 February 2019 (courtesy of National Center for Environmental Prediction)

Table 1: Station Weekly, Accumulated and Percentage of Normal Data

Station	Weekly	Accumulated	% normal
Arcturus	59	422.0	
Banquet	29.7	475.0	84
Beatrice	56.5	467.5	
Beitbridge	0	293.6	126
Bikita	2	364.6	
Bindura Unvsty	54.8	396.3	
Binga	8.5	380.2	76
Buffalo Range	13.9	183.7	47
Buhera	3.6	189.0	34
Bulawayo Apt	27.7	203.3	52
Bulawayo Goetz	20.9	242.2	56
Centenary	32	402.3	
Chakari	60.5	469.0	
Chatsworth	0	142.0	
Chegutu Agric	28.5	546.0	
Chibero	26.5	777.4	138
Chimanimani	3.5	383.7	
Chimhanda	4	525.3	
Chinhoyi	102.5	488.9	92
Chipinge	2.2	333.4	47
Chisengu	7.5	568.0	61
Chisumbanje	1.3	231.0	56
Chivhu	15.2	271.2	51
Concession	86	541.0	
Dotito	8.5	427.0	
Esigodini	0	175.3	
Figtree	0	182.3	
Filabusi	17.4	160.9	
Gokwe	72.4	558.6	102
Gunura	0	190.0	
Guruve	66.3	423.5	79
Gwangwava	6	380.9	
Gweru	72.7	337.0	68
Harare Apt	18	312.5	55
Harare Bvdre	78.2	411.5	68
Harare Crowborough	67.5	512.7	
Harare Kutsaga	39.3	395.9	70
Henderson	50.1	578.1	94
Hwange Nat. Park	6.9	189.0	47
Kadoma	65	487.7	88
Kanyemba	7.7	408.7	78
Kariba	25.8	343.1	66
Karoi	6.3	292.2	51
Kezi	56.4	226.6	69
Kotwa	5.5	291.3	
Kwekwe	35.5	286.7	57
Lalapanzi	25	268.5	
Lupane	34.1	316.5	73
Lusulu	20.2	289.9	
Macheke	21.5	551.5	

Station	Weekly	Accumulated	% normal
Makoholi Exp. Station	18.4	402.9	82
Makuti	0	287.7	
Marondera	59.3	356.6	59
Masvingo	0.3	144.1	31
Matopos Res Stn	20.3	214.7	49
Mayo	0	257.2	
Mhondoro	33.5	453.4	84
Mukandi	9.6	630.2	70
Mt Darwin	8.8	428.7	79
Murehwa	20	489.5	
Mutoko	6.2	402.2	79
Mupfurudzi	68	325.1	
Murambinda	0	212.5	
Mutare Fire Stn	0	470.3	87
Mutasa DC	0	309.5	
Mvuma	0	141.0	
Mvurwi	67.8	408.2	73
Nkayi	33.6	380.6	68
Norton	55	641.0	
Nyakomba	0	401.9	
Nyamaropa	0	464.9	
Nyanga Exp Stn	13.5	372.6	48
Nyanyadzi	0	167.5	
Nyazura	0	281.5	
Odzi	0	188.0	
Pioneer Juru	16.5	360.0	
Plumtree	15.1	346.5	83
Raffingora	37	268.7	
Rupike Irrig.	21.2	172.1	35
Rusape	6.2	380.6	70
Rushinga	9.5	395.2	
Selous	34	649.5	
Shamva Agric	46	438.5	75
Shurungwi	34.4	368.3	
Tsholotsho	12.3	226.3	55
Victoria Falls	6.8	308.3	64
Wedza	17.9	236.2	42
West Nicholson	2.2	187.3	57
Wha wha	67	263.5	
Zaka	2.2	278.7	64
Zvimba	29.5	513.5	
Zvishavane	17.4	248.2	50