



## Livestock & Meat Advisory Council

Exhibition Park, Samora Machel Ave West, P O Box BE 209, Belvedere, Harare  
Phone: +263 (24) 2756 600, 2772 915, 2777 391 Email: [admin@lit.co.zw](mailto:admin@lit.co.zw)

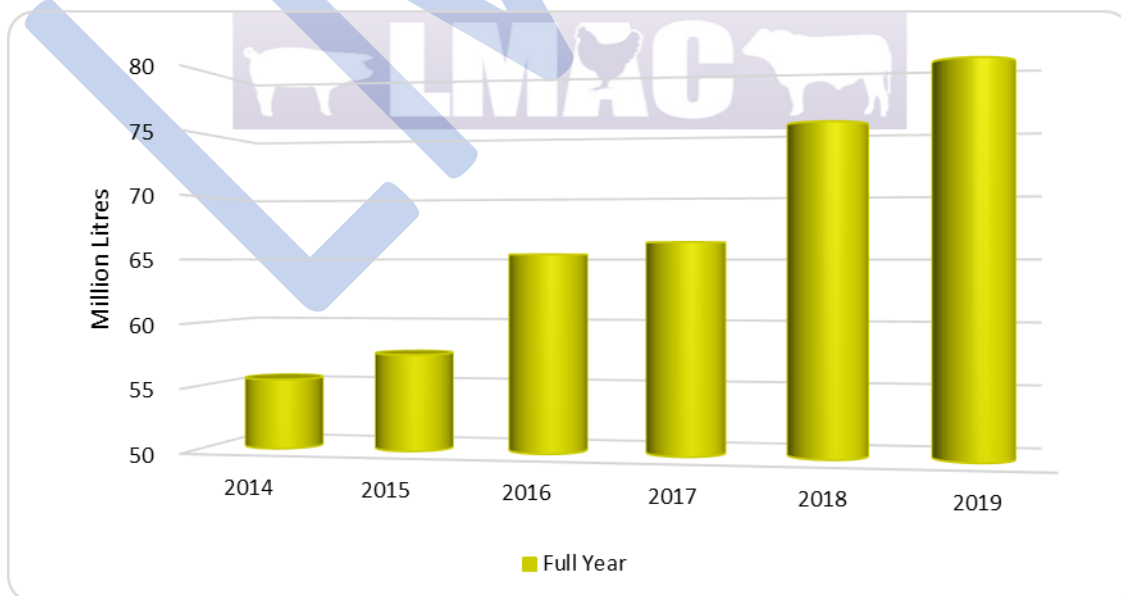
### Market Watch 2019

#### Dairy Sector

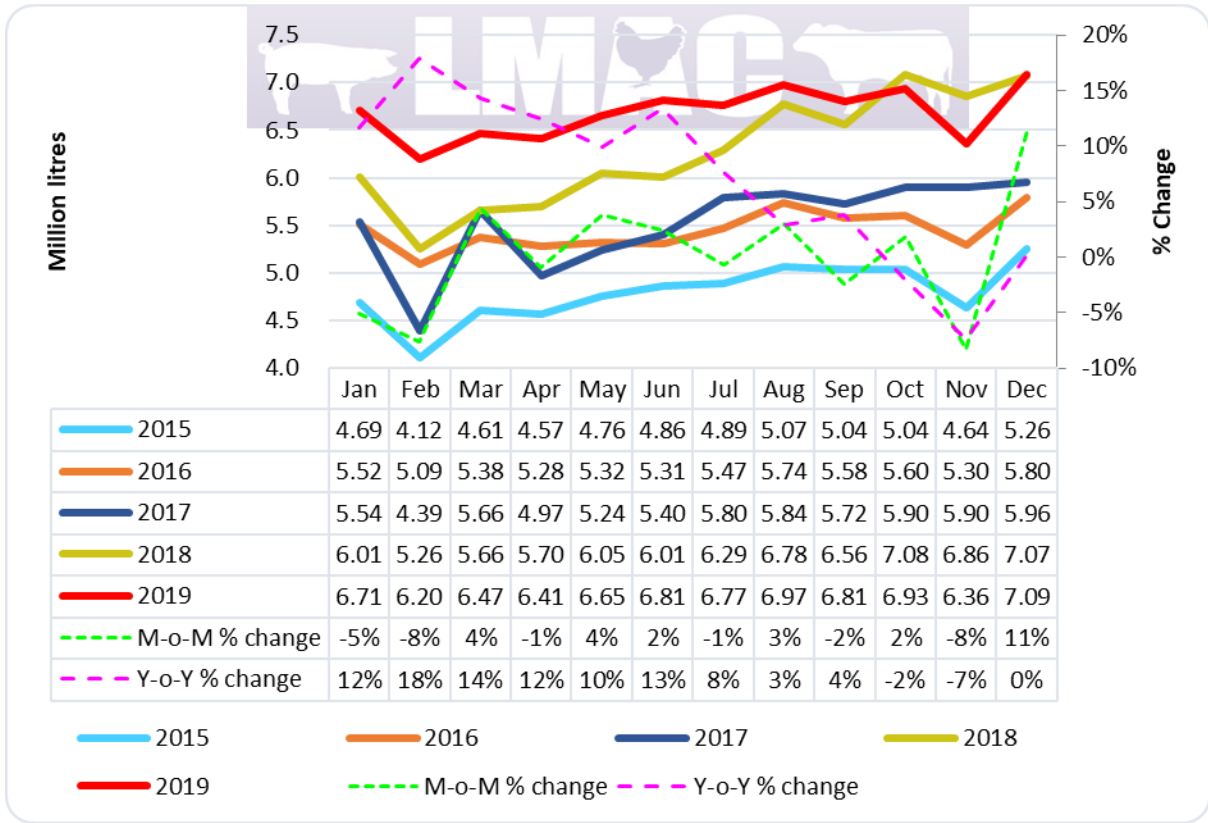
Milk production in Zimbabwe continues to register steady positive growth and in 2019 amounted to 79.9 million litres, an increase of 6% over 2018.

Monthly double-digit growth was registered in milk production in the first four months of 2019 when compared with the previous year. Thereafter, growth in each successive month slowed while in October, a decrease of 2% was recorded.

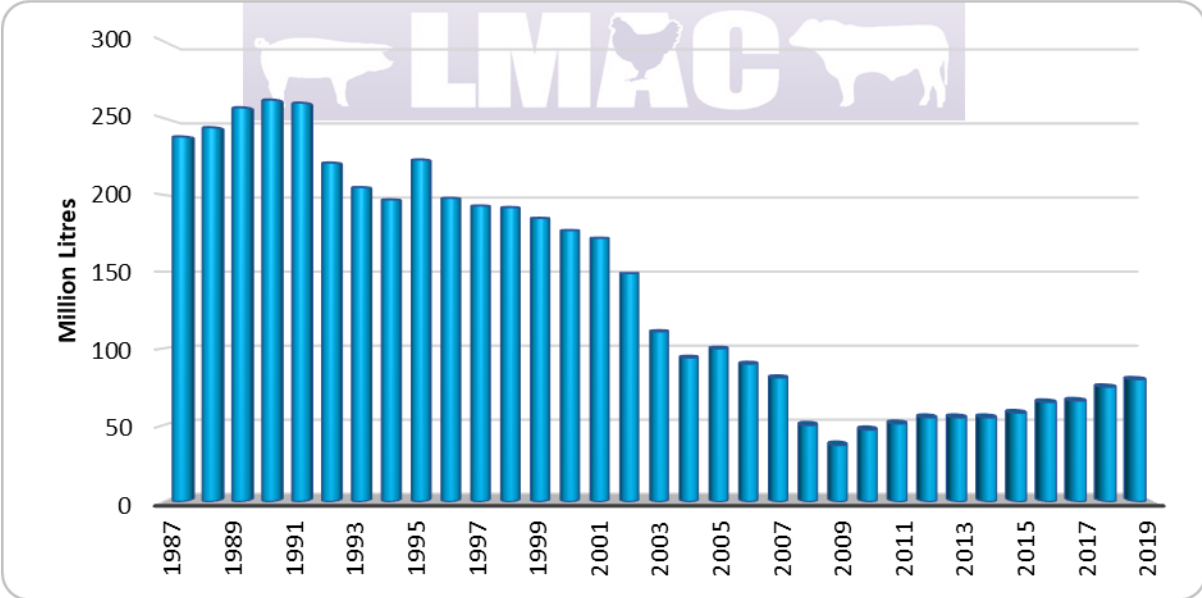
The trend over the year has been attributed to the increasing challenges being faced by dairy farmers. The cost of dairy feed spiked in 2019 and access to water on the back of the drought caused some producers to reduce their dairy herd. Another factor has been the long periods of high temperatures, negatively affecting milk yields as dairy cows are sensitive to high temperatures.



Annual Milk Production, 2014 – 2019



**Monthly Raw Milk Production, 2014 – 2019**



**Annual Milk Production, 1988 – 2019**