



**Livestock and Meat Advisory Council**

Exhibition Park, Samora Machel Avenue West, PO Box BE 209 Belvedere, Harare  
 Phone: +263 (24) 2756 600, 2772 915, 2777 391 Email: [admin@lit.co.zw](mailto:admin@lit.co.zw)  
 Website: [www.livestockzimbabwe.com](http://www.livestockzimbabwe.com)

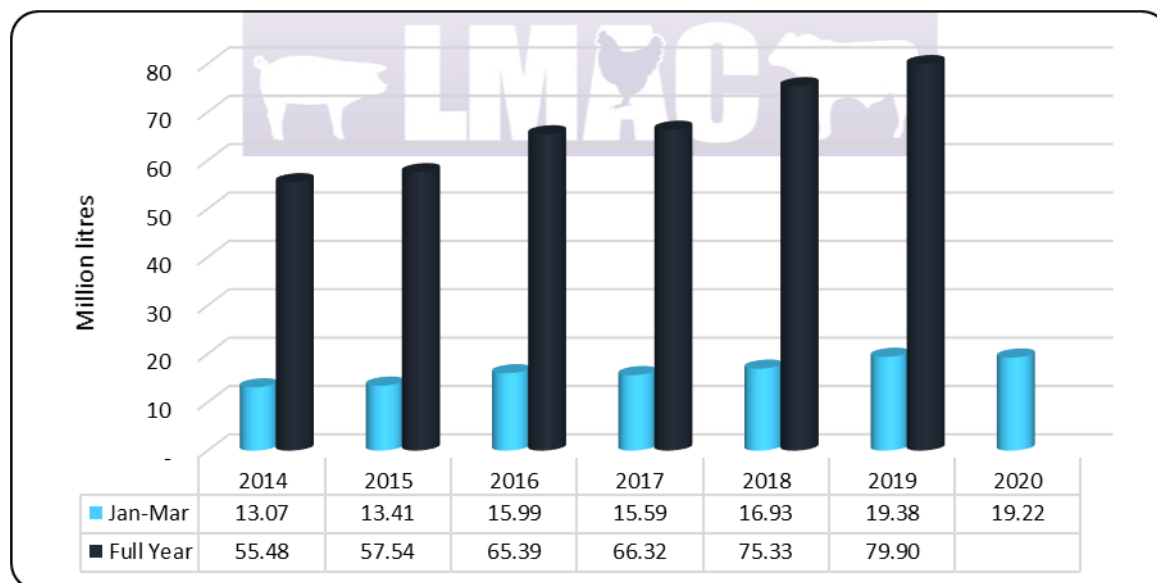
**Market Watch: First Quarter 2020**

**Dairy Sector**

Milk production for the first quarter to March 2020 amounted to 19.2 million litres. This is a marginal decline of 1% over the same period in 2019. January milk collections were the highest for the quarter at 6.83 million litres.

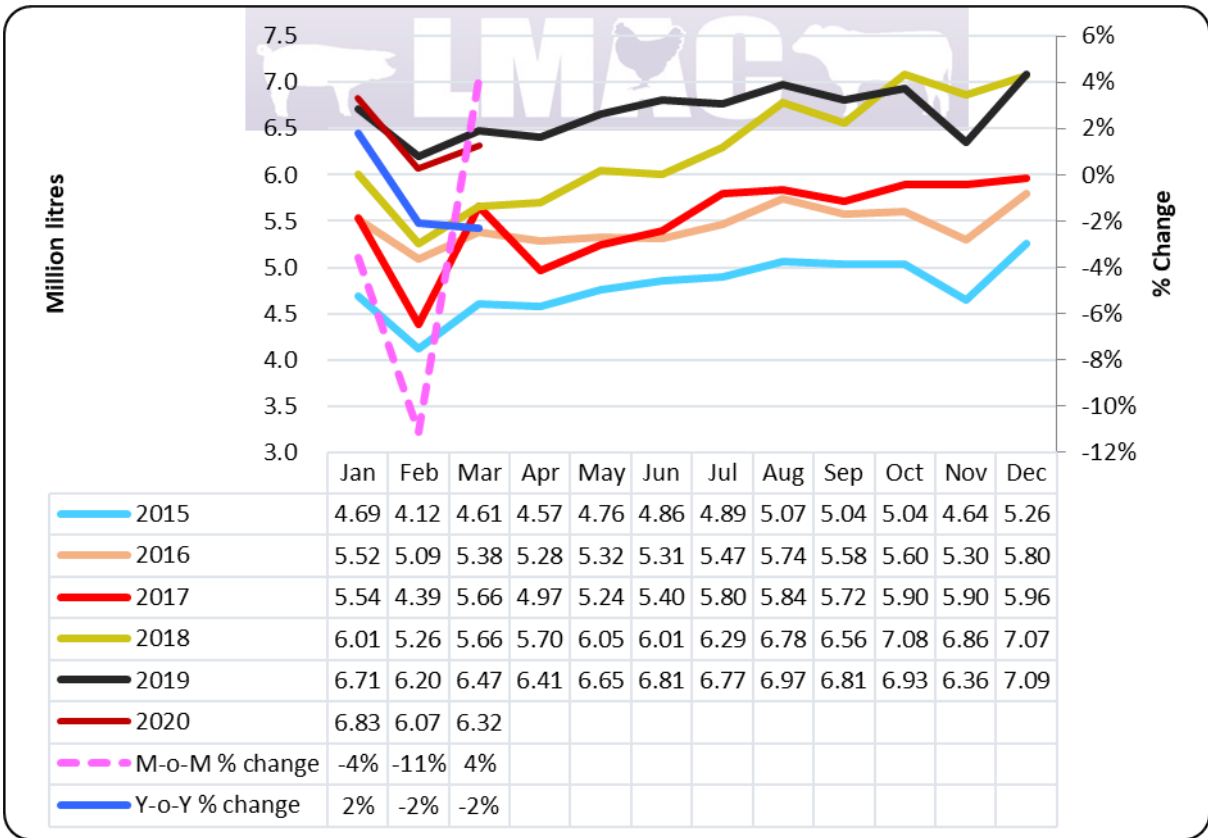
Although this is the second highest first quarter production since 2013, the increasing headwinds the sector is facing is becoming more evident. The government pronouncement on the global pandemic Covid-19 and resultant lockdown is expected to adversely affect the dairy sector, especially in the short run, as producers grapple with increased compliance costs and restricted movements. This development compounds challenges that already existed in the value chain, primarily driven by the deteriorating macro-economic environment.

In 1990, at its peak, annual milk production was more than 262 million litres per annum.

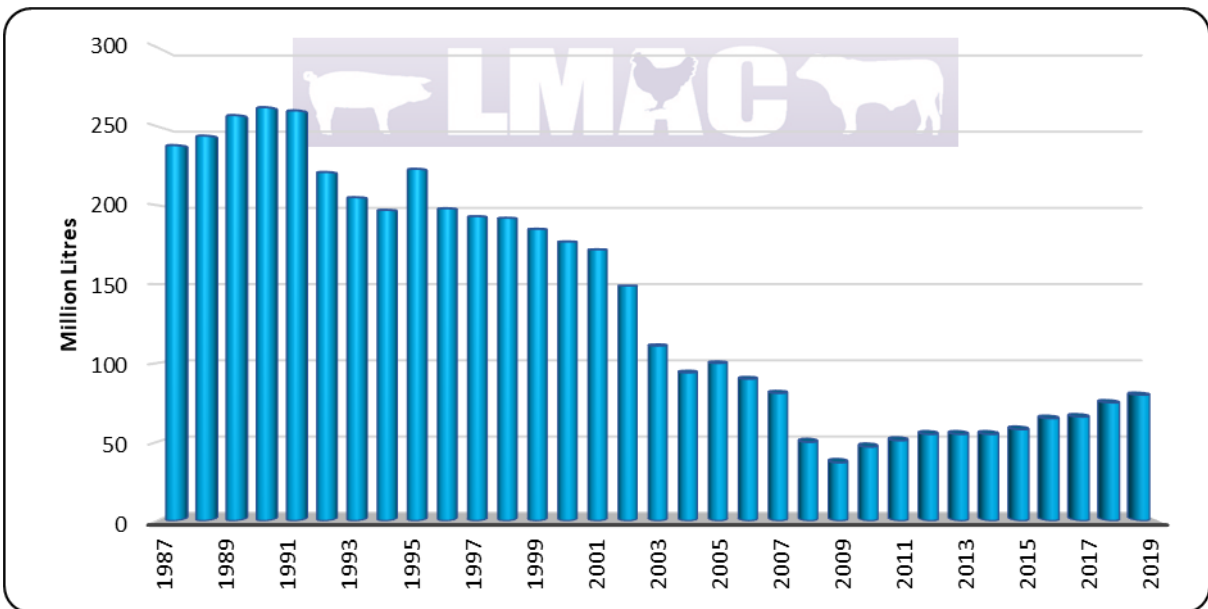


**Milk Production 2014 – 2020**





**Monthly Raw Milk Production, 2015 – 2020**



**Annual Milk Production, 1988 - 2019**