

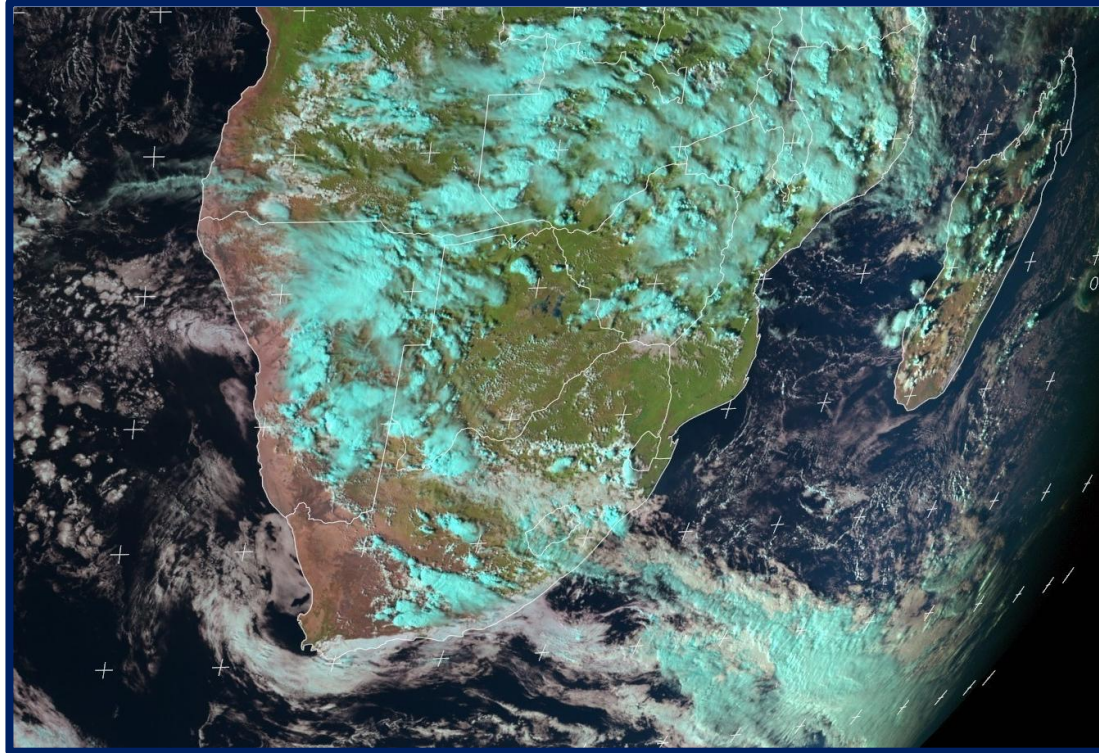


GOVERNMENT OF ZIMBABWE

METEOROLOGICAL SERVICES DEPARTMENT

ISSUED IN CONJUNCTION WITH

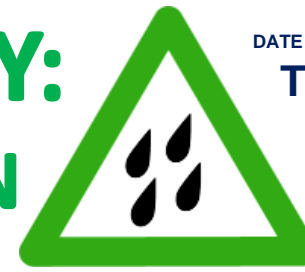
DEPARTMENT OF CIVIL PROTECTION



HOW?: The current rainfalls associated with the Inter-Tropical Convergence Zone, ITCZ, should persist throughout the week, with localized heavier downpours in excess of 30 mm in places.

NB: Soils are saturated thus any excess rains may lead to localized flash flooding and downstream flooding.
(EVEN IF IT HAS NOT RAINED IN YOUR AREA IT MAY HAVE RAINED HEAVILY UPSTREAM)

ADVISORY: HEAVY RAIN



DATE OF ISSUE: THURSDAY 14 JANUARY 2021;
TIME OF ISSUE: 0900HRS

WHAT?: CONTINUOUS RAINS

WHERE?: COUNTRYWIDE

WHEN?: THURSDAY 14 THROUGH TO WEDNESDAY 20 JANUARY 2021

WATCH OUT FOR:

- Riverine flooding, flash flooding
- Localized heavy rains and moderate winds.
- Collapse of huts/houses and fallen trees/tree branches due to excessive moisture
- Open drains and pot holes that may be covered with water

WHAT TO DO:

- **Never attempt to cross fast flowing or flooded rivers** and streams whether walking or driving. Stay indoors wherever possible.
- If you urgently need to travel, **take caution on the roads** as roads may be slippery, and contain hidden dangers covered by water, including fallen trees, utility poles and live wires.
- Follow weather updates or relevant information: **DCP Emergency: 111 or 112**

MET Main Office: +263 778 911 176

WATCH GREEN	ALERT-ORANGE	WARNING -RED
FLOODING IS POSSIBLE 7.5 - 15 mm RAIN & WINDY	FLOODING IS THREATENING 15 - 50 mm RAIN & STRONG WINDS	SERIOUS FLOODING EXPECTED IN LOW LYING AREAS MORE THAN 50mm RAIN & DESTRUCTIVE WINDS
RESPONSE MONITOR THE WEATHER CONDITION	RESPONSE ALERT FOR POSSIBLE EVACUATION	RESPONSE EVACUATE