



ZAGP News

The Newsletter for the Zimbabwe Agricultural Growth Programme (ZAGP)

ISSUE 27: JULY 2021

EDITORIAL

Scale of Interventions

Welcome to Issue 27 of ZAGP News, the newsletter for the European Union funded Zimbabwe Agricultural Growth Programme (ZAGP).

In this issue, we focus on the scale of operations of the projects under ZAGP, as we make strides towards developing a diversified and efficient agriculture sector that promotes inclusive green economic growth.

Working across five value-chains (beef, dairy, goats, pork and poultry) and two support projects focusing on (i) animal health and food safety and (ii) improving the link between agricultural research, education and extension, the programme is tackling various challenges affecting the country's livestock sector.

The programme has set up various entities and is implementing innovative strategies to address the constraints within the country's livestock sector. Broadly, the interventions focus on increasing profitability, building the capacity of farmers, service institutions, and the private sector through increased investment, institutional reforms, and policy alignment.

Hubs for beef production, extension and marketing

Beef cattle producers are now accessing a variety of services offered by the Cattle Business Centres (CBCs). Through these facilities, the [Beef Enterprise Strengthening and Transformation \(BEST\)](#) project, seeks to create beef value-chain services hubs for production, extension and marketing activities.

Implemented in partnership with the private sector, the CBCs are now offering services such as pen fattening; cattle sales and auctions, bulling, artificial insemination, access to veterinary drugs and fodder. Farmers are also accessing financial services, trainings on good animal husbandry practices, fodder and feed production.

Improving milk production and quality

The [Transforming Zimbabwe's Dairy Value-Chain for the Future \(TranZDVC\)](#) project is making headway towards addressing the bottlenecks in Zimbabwe's dairy value-chain with the ultimate goal of improving milk production and quality.

Under TranZDVC, key milestones have been achieved in areas such as the importation and distribution of improved dairy breeds, financing investments in dairy productive assets and infrastructure through the matching grants facility, training and capacity building programmes.

Dairy farmers across the country accessed improved dairy breeds through the heifer matching facility and artificial insemination services. The matching grants facility has also enabled small to large-scale farmers, processors and milk collection centres to make investments in productive assets and infrastructure.

(Cover photo: Mobile feed milling machines acquired for poultry producers under the Inclusive Poultry Value-Chain (IPVC) project.

CONTACT DETAILS

Technical Assistance to the Zimbabwe Agricultural Growth Programme (TA – ZAGP)

18 Borrowdale Road, Harare, Zimbabwe | Tel: +263 242 790 904 | Mobile: +263 718 243 243

E-mail: tnyathi@zagp.co.zw; admin@zagp.co.zw; projects@zagp.co.zw

www.zagp.org.zw



ZAGPInfo



ZAGPInfo

EDITORIAL – Scale of Interventions

The investments are bringing in efficiency to dairy operations, improving production and productivity, hygienic milk production and contributing towards reducing the cost of feed through fodder production and processing.

Agricultural research, extension and education

Linking agricultural research, extension and education is key in ensuring a thriving livestock value-chain. The [Zimbabwe Agricultural Knowledge and Innovation Systems \(ZAKIS\)](#) project is promoting a competitive agricultural environment for improved innovation, agriculture productivity and more sustained development.

Through the Agricultural Centres of Excellence (ACEs) and District Agricultural Centres of Excellence (DACEs) established in Mashonaland West and Matabeleland South provinces, ZAKIS is promoting and facilitating an inclusive, integrated and market-driven agricultural research, education and extension environment.

Coordination of poultry producers

For small-to-medium poultry producers who have been struggling to operate at optimum levels, Poultry Business Units (PBUs) are providing various benefits that have transformed their production levels.

The [Inclusive Poultry Value-Chain \(IPVC\)](#) project has established Poultry Business Units (PBUs) in five clusters in Bulawayo, Gweru, Masvingo, Mutare and Harare. Each cluster acts as an administration and coordination unit for the collective action of poultry producers.

This is enabling poultry producers to gain economies of scale and scope to access extension, inputs, financial and market services in a more convenient and profitable manner.

Services on offer include bulk input procurement, mobile slaughtering, transportation, capacity building and access to markets.

Pork and goat value-chains producer associations

Under the [Value-Chain Alliance for Livestock Upgrading and Empowerment \(VALUE\)](#) project, focus has been on upscaling interventions to ensure commercialisation within the goat and pork value-chain producer associations established in the 20 districts of operation.

Within the goat value-chain, key activities have focused on the establishment of Goat Improvement Centres (GICs) to provide primary business support services such as hands-on training for goat farmers and goat breeding services. VALUE has also spearheaded the establishment of district-level Goat Producers Business Associations and Goat Holding Centres to enable abattoirs and supermarkets to buy goats in bulk.

Under the pork value-chain, the project has set up two region-specific Pork Production Business Syndicates (PPBS) in Mashonaland West and Mashonaland East provinces in partnership with private sector integrators and the Pig Industry Board.

Animal health and food safety

Animal diseases constitute a major constraint to livestock production and safe utilisation of animal products worldwide and Zimbabwe is no exception. The large number of disease outbreaks afflicting the country and the control measures instituted to manage these outbreaks have had significant negative economic impact.

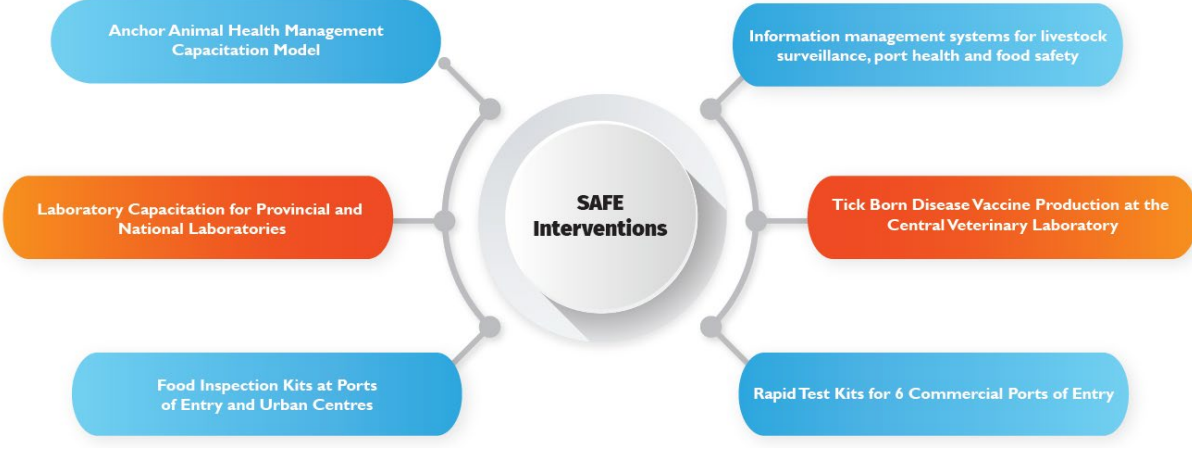
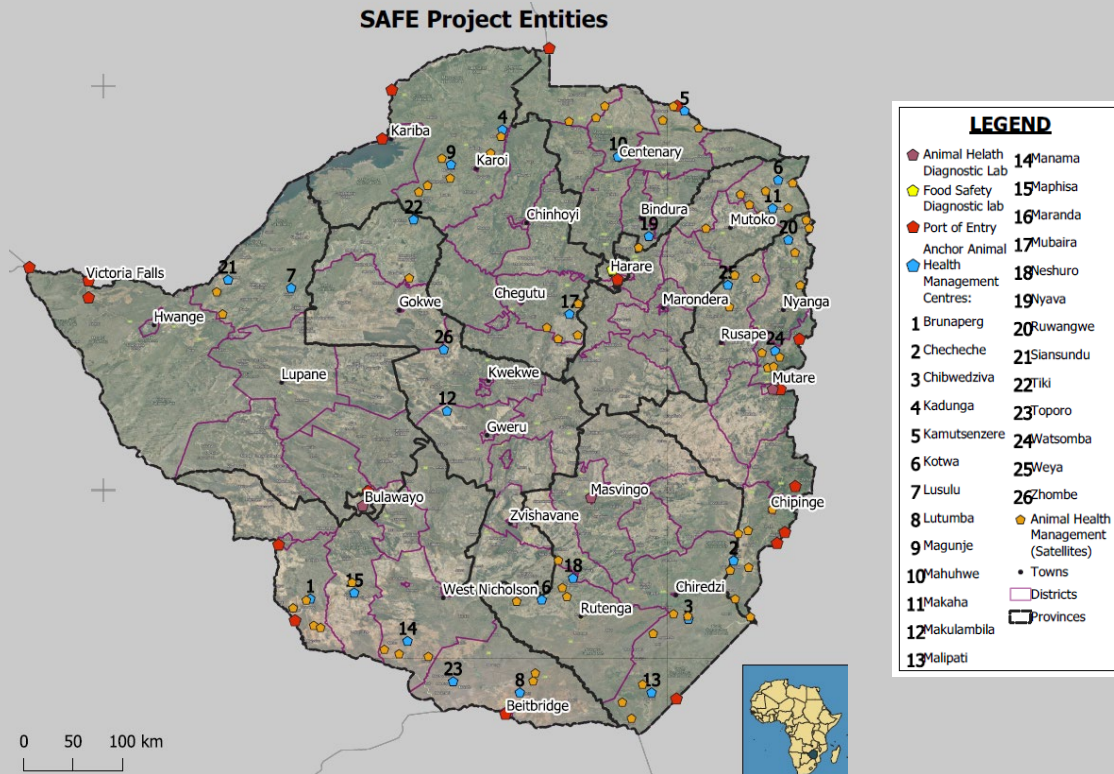
The [Transforming Zimbabwe's Animal Health and Food Safety Systems for the Future \(SAFE\)](#) project is working on interventions to transform Zimbabwe's animal health and food safety systems for improved livestock productivity, food and consumer safety. Through the "Farm to Fork" strategy, focus has been on building the capacity for animal disease control and sanitary and phytosanitary food safety services in the livestock and food processing and handling sectors.

We hope you find this issue informative. Stay safe!



Dairy farmers across the country accessed improved dairy breeds through the heifer matching facility and artificial insemination services.

Anchor Animal Health Management Centre Model for Improved Livestock Productivity



The [Transforming Zimbabwe's Animal Health and Food Safety Systems for the Future \(SAFE\)](#) project is developing 26 Anchor Animal Health Management Centres (AAHMCs) across 20 districts in the eight rural provinces of Zimbabwe – (see the map above for the respective sites).

Each AAHMC is being capacitated to be able to support at least three to eight satellite Animal Health Management Centres (AHMCs) catering for a combined total of 15 – 35 dip tanks. The 26 AAHMCs have a total estimated cattle population of +624,000 owned by about 130,000 households.

The design of the AAHMC model is premised around improved service delivery to bring the products and services closer to the farmers in an affordable way. The availability of the improved services is expected to lead to increased livestock productivity which will in turn motivate farmers and other value-chain players.

SAFE is currently setting up two pilot centres in Bindura and Makoni districts in Mashonaland Central and Manicaland provinces, respectively. These are expected to be in operation by 31 August 2021 while the other 24 AAHMCs are expected to be operational by the end of November 2021.

Services to be offered:

- Public good services
Disease outbreak investigations; sample collection and treatment; livestock census; scheduled farm inspections; farmer training, extension and advisory services.
- Commercial services
Cattle dipping; vaccinations; animal remedies and equipment sales; animal movement control; branding and tagging.

Poultry Business Units Turning Around the Fortunes of Producers

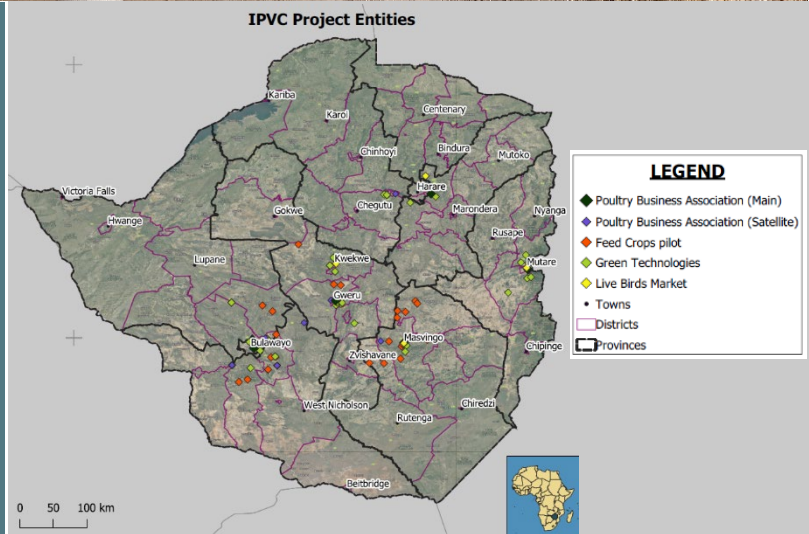


The Inclusive Poultry Value-Chain (IPVC) project has set up five Poultry Business Units (PBUs) in Mutare, Masvingo, Gweru and Bulawayo. Sub-PBUs have also been established in Domboshawa, Norton, Umzingwane, Mashava, Kwekwe, and Chikanga.

These PBUs offer different services ranging from bulk input procurement, collective marketing, joint access to financial services and extension services.

Currently, **2,484 producers** are registered poultry business association members across all clusters.

Cumulatively, **183,822-day old chicks** and **1,491.32 tonnes of subsidised feed** have been sold to members.



PBU Scale of Services

Poultry Business Units	Membership	Males	Females	Day Old Chicks	Feed (tonnes)
Poultry Direct (Harare PBA)	628	232	396	79,495	795.95
Manica (Mutare PBA)	496	136	360	42,369	185.9
Golden Poultry (Masvingo PBA)	531	182	349	39,933	256.9
Platinum Poultry (Gweru PBA)	485	183	302	5,575	137.15
Matabeleland (Bulawayo PBA)	344	123	221	16,450	115.42
	2,484	856	1,628	183,822	1,491.23

Poultry Business Units Turning Around the Fortunes of Producers

MOBILE SLAUGHTER UNITS

All 5 PBUs are offering mobile slaughter and plucking equipment to members of poultry business associations.



LIVE BIRD AND EGG MARKETS

4 live market sheds for live birds and eggs completed to link poultry farmers to markets. The sheds have a minimum capacity of 1,000 birds. The live bird markets and butcheries are set to be fully functional by the 31st of October 2021.



TRAINING

In total, 9 323 poultry farmers and Agritex officials have been trained on good agricultural practices across all five main PBUs including their sub-PBUs.

“Although I am an Agritex officer by profession, I did not know many things about poultry including biosecurity measures, some diseases and methods of controlling these diseases. I used to incur losses due to egg breakages and mortality before the intervention of IPVC project”.

Chiedza Chikukwa, Masvingo province.

FEED MILLING MACHINES

2 small-scale feed milling machines procured. The machines will assist small-scale farmers with own feed formulation across all PBUs.



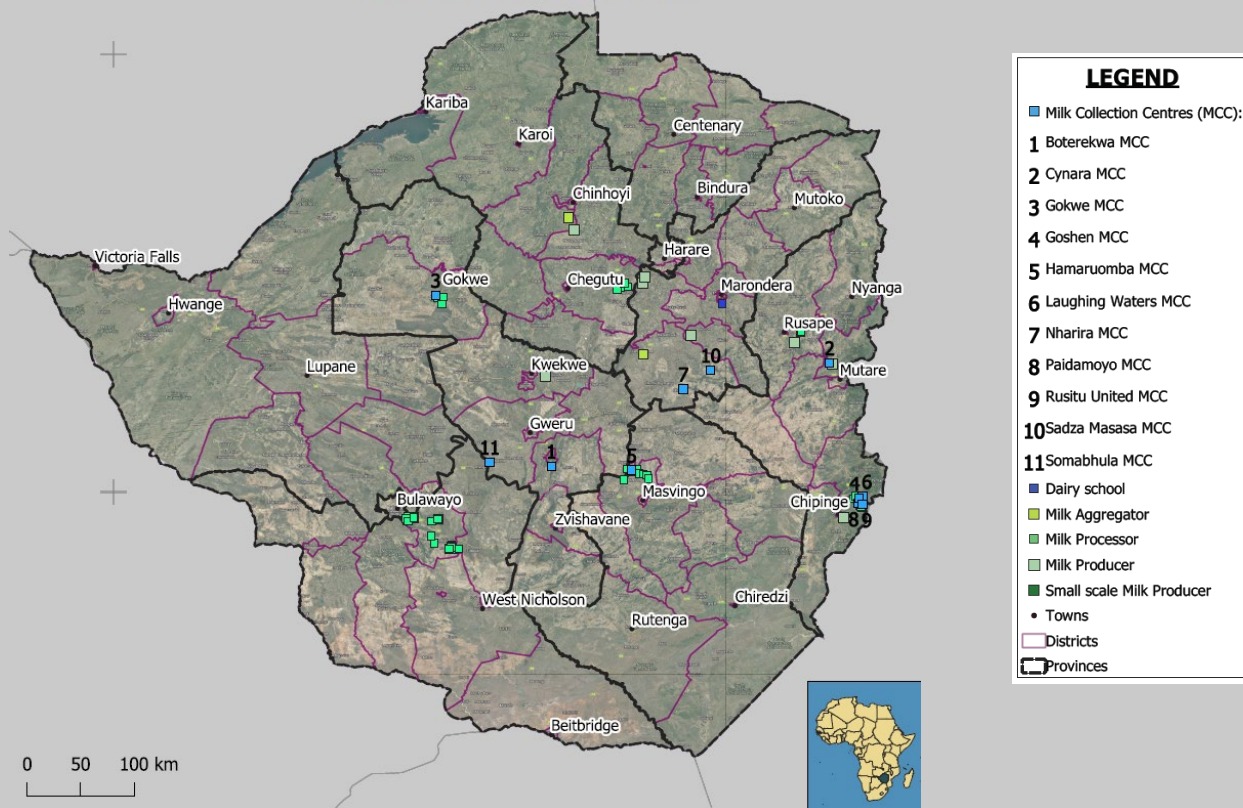
GREEN TECHNOLOGIES

30 solar powered incubators installed in all clusters to promote green technologies. At least 9 photovoltaic lighting systems set up to lengthen the day for layer chickens, to increase egg productivity.



TranZDVC Improving Milk Production and Quality

Tran ZDVC Project Entities



The [Transforming Zimbabwe's Dairy Value-Chain for the Future \(TranZDVC\)](#) project aims to address the root causes of under-performance in the dairy value-chain in Zimbabwe by strengthening the linkages between production, processing and financing.



MATCHING GRANTS FACILITY

Window One: 19 awards to Large-scale Farmers

Tractors, hay balers, planters, silage cutters, solar powered boreholes, centre pivots, boom sprayers, disc ploughs and harrows, milking machines and cans.

Window Two: 24 awards to Milk Collection Centres and Small-scale Processors

Delivery truck, packaging machine, solar borehole, mobile cold room, cold room, milk tank.

Window Three: 128 awards Small-scale Farmers and Feed Entrepreneurs

Tractor, chopper grinders, slasher haymaker, irrigation equipment, solar equipment, milking cans and buckets, boreholes, solar powered boreholes and barbed wire.

Window Four: 8 awards to Medium-scale Farmers

Milk homogeniser, mower, milking parlour, borehole, milk cooling tank, pasteurising tank.

HEIFER MATCHING FACILITY

500 in-calf heifers distributed to 284 farmers.

SEXED AND CONVENTIONAL SEMEN FACILITY

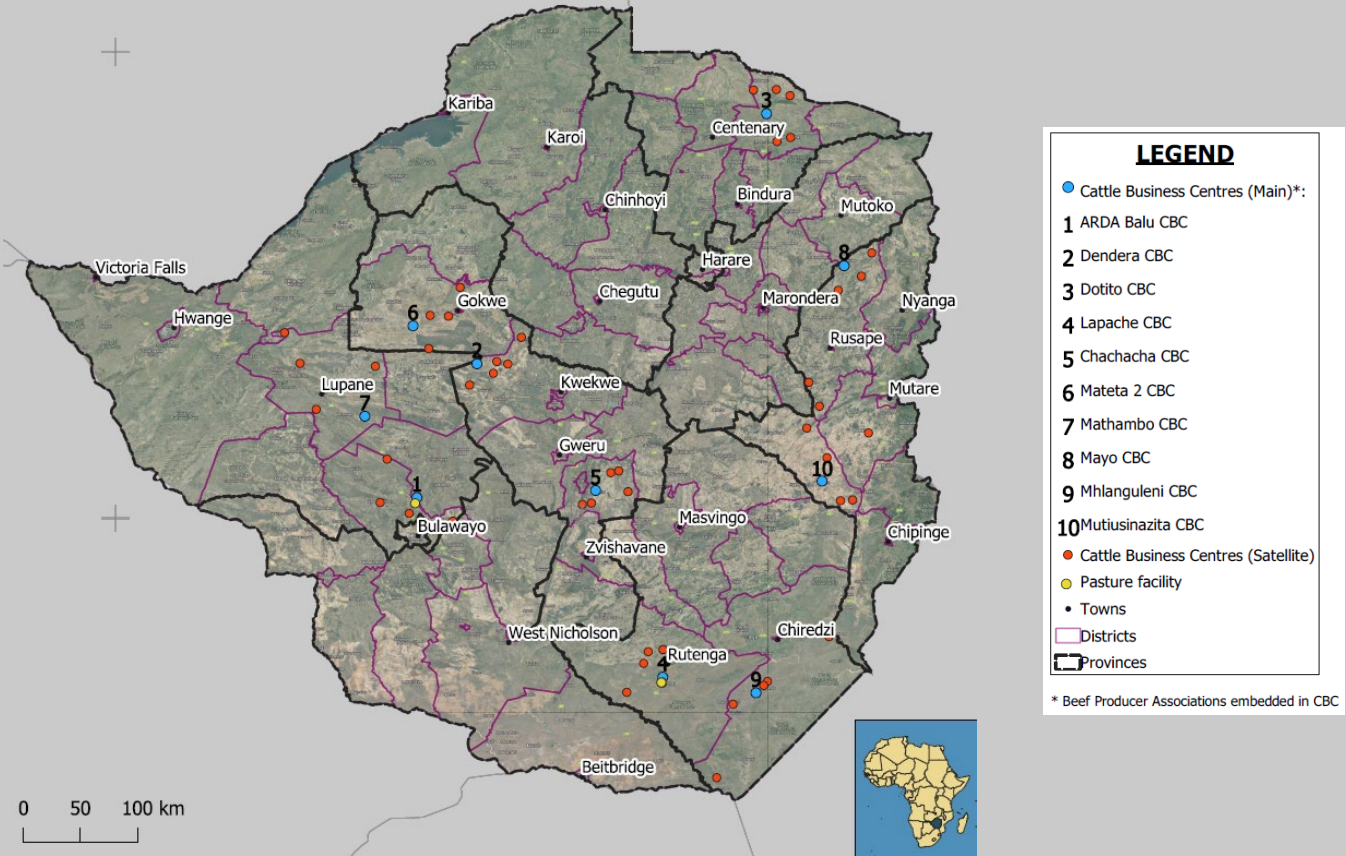
2,000 cows identified for Artificial Insemination (AI) servicing.

FINANCING, CAPACITY BUILDING AND BUSINESS SUPPORT SERVICES

26 MCCs equipped to offer full services. 50% matching grant to support refurbishment/modernising of the Aglabs laboratory for independent milk, feed, and soil testing.

Improving Access to Reliable and Competitive Cattle Markets

BEST Project Entities



The Beef Enterprise Strengthening and Transformation (BEST) project provides a number of critical beef value-chain services such as feedlotting, cattle auctions, direct/ walk-in sales, fodder sales, bulling services, farmer training and extension.

- 2 out of 10 main Cattle Business Centres (CBCs) in Buhera and Chiredzi districts fattened a total 65 cattle for 30 farmers in 2020. The project targets 600 cattle (60 per CBC) for 2021 feedlot season.
- An additional 115 cattle were fattened on 5 satellite CBCs in 2020. The project has a target of 750 cattle (15/site) by December 2021.
- Kwekwe, Chiredzi and Mwenezi CBCs have been offering direct walk-in sales since 2020 with an average of 36 cattle sold per month at each site.
- All the 10 CBCs are now functional and are expected to buy walk-ins with total target of 1,000 cattle by 2021 year-end.
- A total of 46 cattle were sold by 37 farmers (26M, 11F) at the Gokwe CBC as walk-ins in June 2021 while 250 cattle were sold for a total value of US\$ 74,250 at Lapache CBC since 2020.
- Using an average of 36 cattle, the project targets 360 cattle per month to be sold directly to private sector companies running the CBCs.

Promoting Fodder Production for Enhanced Animal Nutrition and Conception Rates



Beef cattle producers have widely adopted fodder production to feed their animals during the dry season to maintain body condition and prevent poverty deaths.



Irrigated fodder production at the Lapache CBC in Mwenezi district.



BEST provides a number of critical beef value-chain services such as feedlotting, cattle auctions, direct/walk-in sales, fodder sales, bulling services, farmer training and extension.

The project promotes fodder production to address the challenges of insufficient animal feed and nutrition. To accommodate different scales of beef producers, this model showcases fodder production under both rain fed and centre pivot irrigation systems.

Two sites in Umguza (50 hectares) and Mwenezi districts (35 hectares) are producing fodder from irrigated pastures. The Lapache CBC in Mwenezi district harvested a cumulative total 6,678 hay bales between October 2020 to date. The CBC records an average 580 bales in monthly sales at US\$1.00/bale for local farmers and US\$2.00/bale for StM beef producers from outside Lapache. A target of 10,000 hay bales will be sold to farmers in Mwenezi district end of 2021.

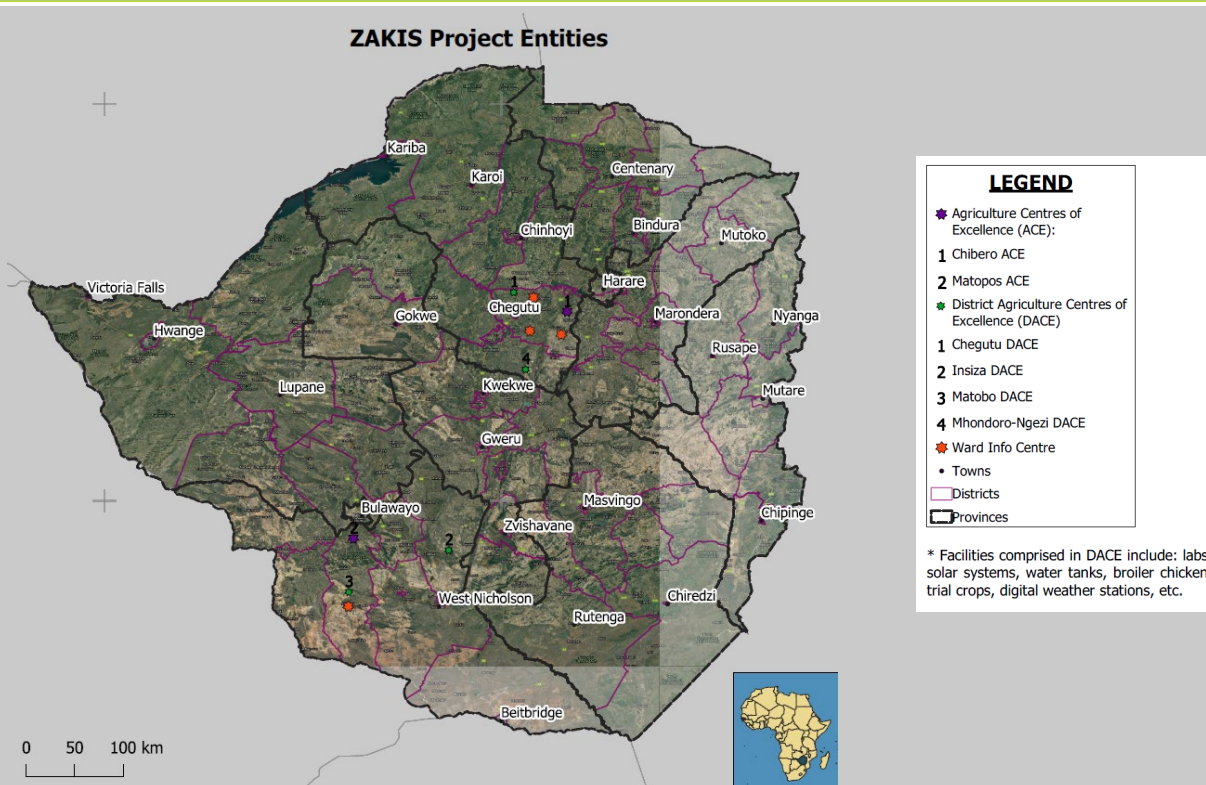
Each main CBC without irrigation has a minimum 1 hectare plot to demonstrate fodder production under rain fed conditions – a practice common to most small to medium scale beef producers under the action. A variety of grass and legume fodder crops are planted with the aim to identify species that are adapted to the different locations.

Three main CBCs (Shurugwi, Chiredzi, Mt. Darwin) hosted successful fodder demo plots in the 2020/21 growing season. A total of 326 hay bales were harvested from total 3.2 ha planted. All 10 main CBCs will grow fodder on demonstration plots in the 2021/22 season to showcase the technology to farmers.

To enhance high adoption and scaling up of fodder production, a total of 323 fodder demo plots were established at farm-level in the 2020/21 season. These plots are hosted by lead farmers under mentorship and supervision of local extension and project staff. An estimated 1,525 hay bales were harvested.

Fodder demo host farmers will feed (supplement) cattle during the dry season to maintain body condition and prevent poverty deaths. A target of 1,200 farmer plots will be established in the 2021/22 cropping season.

Strengthening Agricultural Education, Research, and Extension



The Zimbabwe Agricultural Knowledge and Innovation Services Project works to improve productivity and incomes through harmonising the delivery of agricultural education, research, and extension services to farmers. The project has made significant progress on this through various interventions. Commenting on the project's activities recently, the acting chief director of the Agricultural Research, Innovation and Development Directorate Dr Dumisani Kutuywayo said, "To date, ZAKIS has made significant contributions to strengthening the essential interconnectivity of agricultural education, research, and extension for ensuring that relevant and up-to-date knowledge and innovation permeates the system at all levels, with continual feedback from farmers."

Two national Agricultural Centres of Excellence (ACEs) have been established at Chibero Agricultural College (ChACE) and at the Matopos Research Institute (MACE). Four District Agricultural Centres of Excellence have been set up in Matobo, Insiza, Mhondoro Ngezi and Chegutu districts.



Partnerships improve access to services and technology

In the 2020/21 summer season, the project successfully formed partnerships between private sector companies and Agricultural Centres of Excellence. Crop varietal demonstrations and trials show farmers how each of the showcased varieties responds to the area rainfall, nutrition, pests, and diseases.

This information equips farmers with skills on which variety to choose for their agro-ecological zone.

The private sector companies involved included South Sea Investments (horticulture), Seedco, Klen Karoo (K2), Mukushi, Seed-Co, National Tested Seeds, Agri-seeds, Pannar, Pioneer Seed and Superfert

Strengthening Agricultural Education, Research, and Extension

Crop Trials at ACEs and DACEs

- Maize (6 varieties); sorghum (9 varieties); pearl millet (2 varieties); cowpeas (9 varieties); sweet potatoes (2 bio-fortified varieties) and sunflower (1 variety).

Agricultural Education

- Agricultural Education for Development 5.0 (AED5.0) curriculum launched.
- 6 commissionable ward information centres. Target 24 by December 2021.
- Development of in-service training application targeting farmers and extension officers.
- Testing and approval 7 agricultural technologies and practices. These have been adopted by 3,032 smallholder farmers in the target districts

Artificial Insemination (AI)

- AI technology in Insiza and Matobo districts to increase genetic variation.
- 158 trained on AI.
- 237 and 225 cows inseminated. Pregnancy rate of 56,7% was achieved
- 38 female and 200 male farmers benefited from the initiative

Fodder Production and Preservation

The project established demonstration sites for on-farm production of fodder in the target wards for farmers to learn fodder production.

- 34 farmers received 500g of lablab and 250g of sorghum seed each
- 25 farmers received 500g of Mucuna and 10kg of Bana Grass each
- 515 female and 590 male farmers were successfully trained in hay and silage making



The Matobo District Agricultural Centre of Excellence produced excellent rain-fed small grains at demo sites.



ZAKIS promotes fodder production and preservation technologies using low cost locally available resources to produce home grown livestock feed.

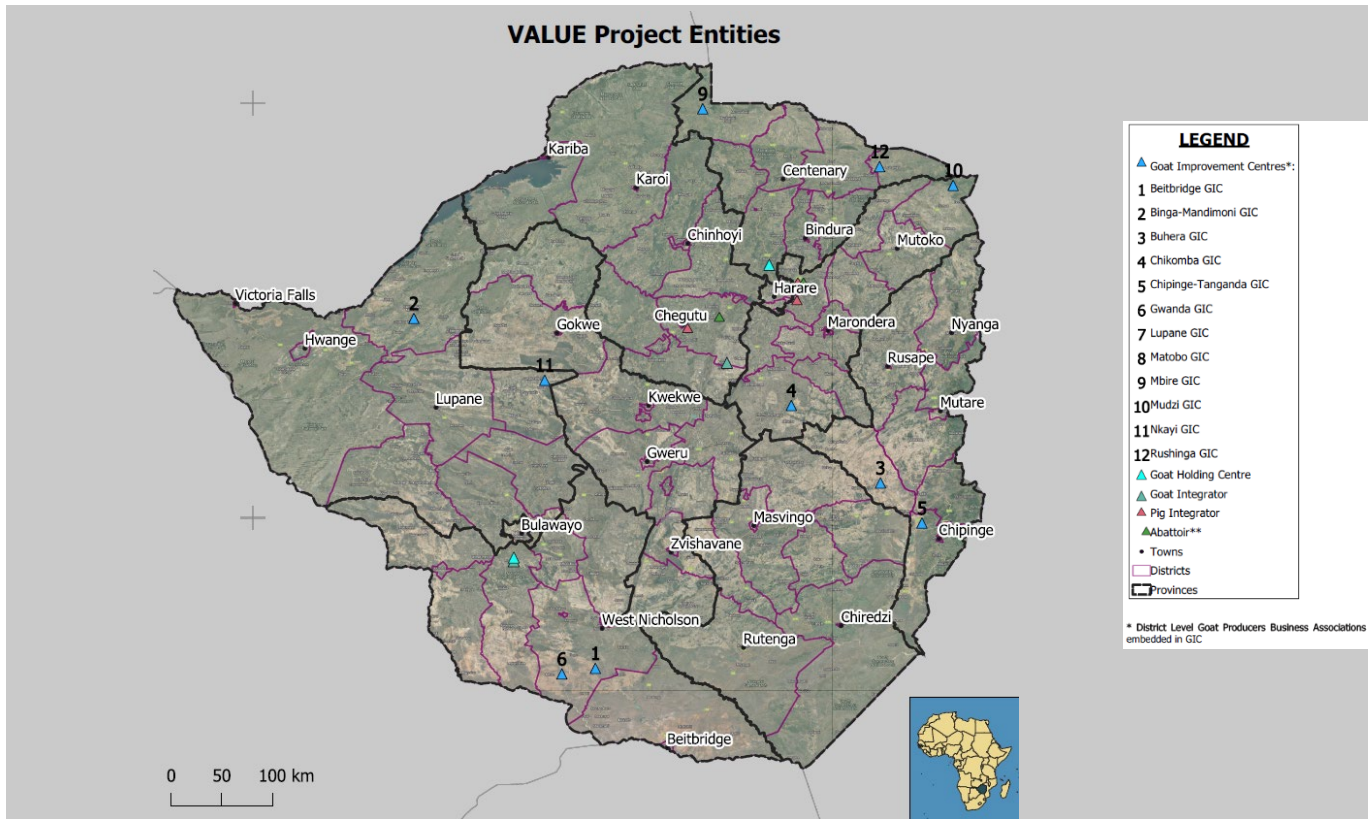


Participatory Varietal Selection Trials

Participatory varietal selection facilitates the development of varieties that are suitable for marginal soils and farmers' interests. The involvement of farmers in the breeding process helps to enhance adoption rates. The results of the trials showed that farmers prefer varieties with a high yield, large panicle, and clean seed.

MACE Crop Breeding Officer, Olivia Mukondwa said, "Before ZAKIS we were doing on-station evaluation of different varieties, but we could not adequately prepare them for release to the market. ZAKIS enabled us to bring these varieties to the farmer by setting up trials at 32 farmers' fields. This enabled us to reach more farmers and increase the adoption rate of new varieties."

Transforming and Promoting the Goat and Pork Value-Chains



The Value-Chain Alliance for Livestock Upgrading and Empowerment (VALUE) is focusing on transforming and promoting the goat and pork value-chains in Zimbabwe. VALUE seeks to scale-up and upgrade the value-chains to supply safe, quality-assured livestock and meat products along the six targeted transport/production corridors feeding into in Zimbabwe's two major meat markets of Harare and Bulawayo. The project is targeting 10,000 goat farmers in 12 districts and 1,000 pork producers in Mashonaland East and Mashonaland West provinces.



PORK VALUE CHAIN

Services: Improved genetics; weaners for fattening; semen doses from grandparent (GP) stock; collective action (input and output marketing); training and extension.

- **3680** weaners produced from 184 FI sows (at 10 weaners per cycle per sow. **2,576** available for sale to farmers at USD55.00 each.
- **560** gilts and boars (breeding stock) produced from 28 GP. 336 available for sale to farmers at USD250.00 each.
- **6,240** semen doses for Artificial Insemination (AI) from GP boars. Semen sold at USD5.00 per unit.



GOAT VALUE CHAIN

Goat Improvement Centres (GICs): Physical hubs established to provide primary business support services, such as: hands-on training for farmers, demonstrations, breeding services, aggregation or marketing and input sales.

- **4,086** goats dipped on monthly basis across 12 GICs.
- **50 - 100** goats on average per GIC per month aggregated and marketed across 12 GICs.
- **720** does per 45 days for mating services across 12 GICs.



Download the March to June Issue of VALUE News to get project updates.

PROJECT NEWS

Agriculture Education for Development 5.0 (AE4D 5.0) Launched



Agricultural education is set to be transformed through the launch of the Agriculture Education for Development 5.0 (AE4D 5.0) curriculum launched virtually on 28 July 2021.

The new curriculum was jointly spearheaded by the [Transforming Zimbabwe's Animal Health and Food Safety Systems for the Future \(SAFE\)](#) and [Zimbabwe Agriculture Knowledge and Innovation Systems \(ZAKIS\)](#) projects in collaboration with the Ministry of Lands, Agriculture, Fisheries, Water, and Rural Resettlement.

The new curriculum for agriculture colleges is a culmination of extensive consultations with diverse agriculture stakeholders and is expected to transform the way agriculture colleges train students and in turn the agricultural sector in Zimbabwe.

Follow the link below to watch the full proceedings:



[Watch video of the launch](#)

Curriculum Launch in the News

The Herald: 28 July 2021 – [New curriculum for agricultural colleges launched](#)

The Sunday News: 29 July 2021 - [New Agricultural Education for Development \(AE4D\) 5.0 curricular launched](#)

The Sunday News: 01 August 2021 - [New agric curriculum sets Zim on the map](#)

This publication was produced with the financial support of the European Union. Its contents are the sole responsibility of the Zimbabwe Agricultural Growth Programme and do not necessarily reflect the views of the European Union.